



## UK Office

### Everest Biotech Ltd

Cherwell Innovation Centre  
77 Heyford Park  
Upper Heyford  
Oxfordshire  
OX25 5HD  
UK

Enquiries:

[info@everestbiotech.com](mailto:info@everestbiotech.com)

Sales:

[sales@everestbiotech.com](mailto:sales@everestbiotech.com)

Tech support:

[support@everestbiotech.com](mailto:support@everestbiotech.com)

Tel: +44 (0)1869 238326

[www.everestbiotech.com](http://www.everestbiotech.com)

**Research Use Only. Not for  
diagnostic or therapeutic use.**

## EB12280 - Goat Anti-alpha-1-antitrypsin (aa230-241) Antibody

Size: 100µg specific antibody in 200µl



### Target Protein

**Principal Names:** SERPINA1, serpin peptidase inhibitor, clade A (alpha-1 antiproteinase, antitrypsin), member 1, A1A, A1AT, AAT, PI, P11, PRO2275, alpha1AT, alpha-1 protease inhibitor, alpha-1-antiproteinase, alpha-1-antitrypsin, alpha-1-antitrypsin null, protease inhibitor 1 (anti-elastase), alpha-1-antitrypsin, serine (or cysteine) proteinase inhibitor, clade A, member 1, serpin A1

**Official Symbol:** SERPINA1

**Accession Number(s):** NP\_000286.3

**Human GeneID(s):** [5265](#)

**Important Comments:** Reported variants represent identical protein: NP\_001121174.1, NP\_001121179.1, NP\_001121172.1, NP\_001121177.1, NP\_001121178.1, NP\_001121176.1, NP\_001121175.1, NP\_000286.3, NP\_001121173.1, NP\_001002236.1, NP\_001002235.1.

### Immunogen

Peptide with sequence C-EDFHVDQVTTVK, from the internal region of the protein sequence according to NP\_000286.3.

Please note the [peptide](#) is available for sale.

### Purification and Storage

Purified from goat serum by ammonium sulphate precipitation followed by antigen affinity chromatography using the immunizing peptide.

Supplied at 0.5 mg/ml in Tris saline, 0.02% sodium azide, pH7.3 with 0.5% bovine serum albumin.

Aliquot and store at -20°C. Minimize freezing and thawing.

### Applications Tested

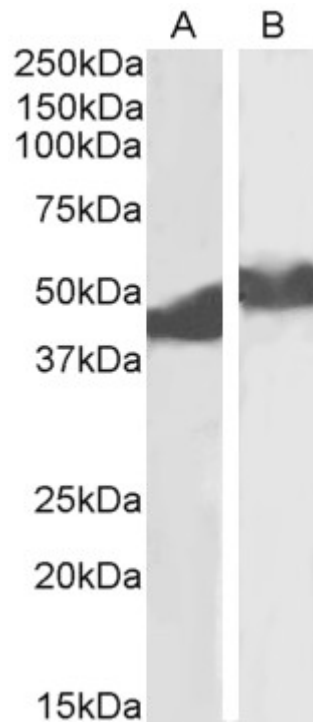
**Peptide ELISA:** antibody detection limit dilution 1:128000.

**Western blot:** Approx 49kDa band observed in Albumin-deplete Human Plasma and Serum lysates (calculated MW of 46.7kDa according to NP\_000286.3). Recommended concentration: 0.01-0.03µg/ml.

### Species Reactivity

**Tested:** Human

**Expected from sequence similarity:** Human



EB12280 (0.01 $\mu$ g/ml) staining of Albumin-depleted Plasma (A) and Serum (B) lysates (35 $\mu$ g protein in RIPA buffer). Primary incubation was 1 hour. Detected by chemiluminescence.