



UK Office

Everest Biotech Ltd

Cherwell Innovation Centre
77 Heyford Park
Upper Heyford
Oxfordshire
OX25 5HD
UK

Enquiries:

info@everestbiotech.com

Sales:

sales@everestbiotech.com

Tech support:

support@everestbiotech.com

Tel: +44 (0)1869 238326

Fax: +44 (0)1869 238327

US Office

Everest Biotech c/o Abcore

405 Maple Street, Suite A106
Ramona,
CA 92065
USA

Inquiries:

info@everestbiotech.com

Sales:

usasales@everestbiotech.com

Tech support:

support@everestbiotech.com

Tel: 888-320-4628 (toll-free)

Fax: 888-841-9041

www.everestbiotech.com

**Research Use Only. Not for
diagnostic or therapeutic use.**

EB11713 - Goat Anti-Alpha-synuclein Antibody

Size: 100µg specific antibody in 200µl



Target Protein

Principal Names: alpha-synuclein, NACP, non A-beta component of AD amyloid, PARK1, PARK4, PD1, SNCA, synuclein alpha-140, synuclein, alpha (non A4 component of amyloid precursor)

Official Symbol: SNCA

Accession Number(s): NP_009292.1; NP_000336.1

Human GeneID(s): [6622](#)

Non-Human GeneID(s): 20617 (mouse), 29219 (rat)

Important Comments: This antibody is expected to recognize both reported isoforms (NP_009292.1; NP_000336.1). Reported variants represent identical protein: NP_000336.1, NP_001139527.1, NP_001139526.1

Immunogen

Peptide with sequence C-ATGFVKKDKLGK, from the internal region of the protein sequence according to NP_009292.1; NP_000336.1.

Please note the [peptide](#) is available for sale.

Purification and Storage

Purified from goat serum by ammonium sulphate precipitation followed by antigen affinity chromatography using the immunizing peptide.

Supplied at 0.5 mg/ml in Tris saline, 0.02% sodium azide, pH7.3 with 0.5% bovine serum albumin.

Aliquot and store at -20°C. Minimize freezing and thawing.

Applications Tested

Peptide ELISA: antibody detection limit dilution 1:128000.

Western blot: Approx 17kDa band observed in Human Brain (Amygdala) and fetal Mouse Brain lysates (calculated MW of 14.5kDa according to Human NP_000336.1 and Mouse NP_033247.1). This molecular weight is routinely observed by other sources.

Recommended concentration: 0.1-0.3µg/ml. Primary incubation was 1 hour.

IHC: Paraffin embedded Human Brain (Cerebellum). Recommended concentration: 5µg/ml.

Species Reactivity

Tested: Human, Mouse

Expected from sequence similarity: Human, Mouse, Rat, Dog, Pig

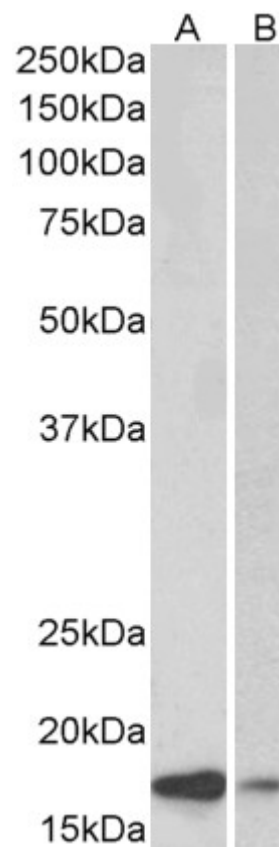
Specific References

This antibody has been successfully used in the following paper:

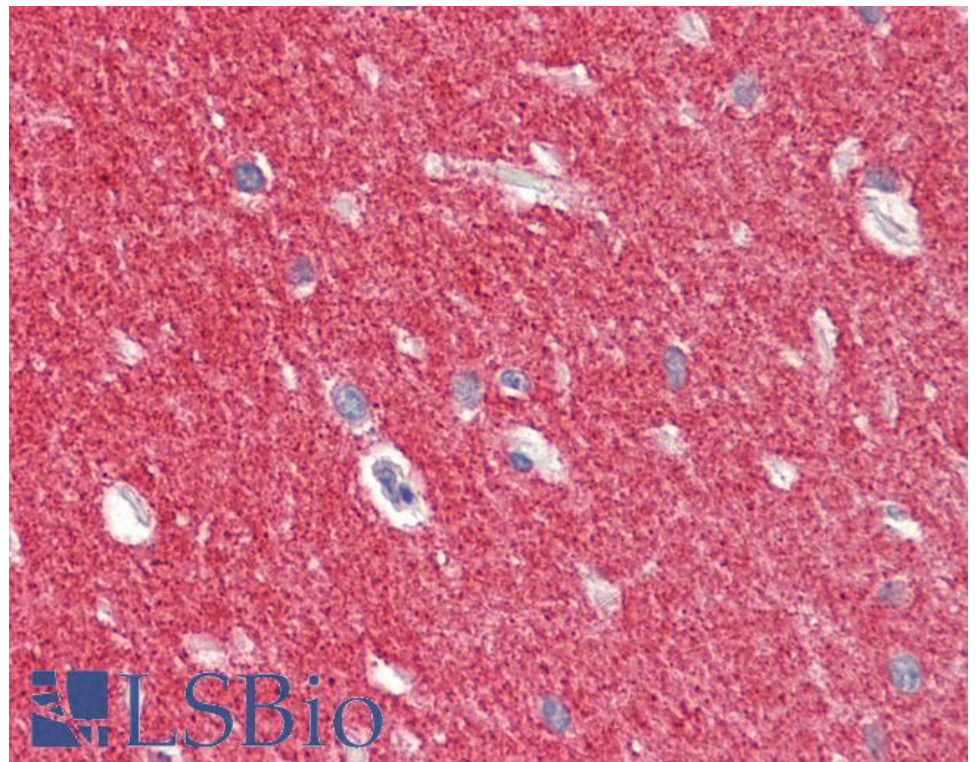
Karina J. Vargas, P. L. Colosi, Eric Girardi, Jae-Min Park, Sreeganga S. Chandra
α-Synuclein facilitates clathrin assembly in synaptic vesicle endocytosis
(2021) <https://doi.org/10.1101/2020.04.29.069344>
PMID: 0

This antibody has been successfully used in Western blot on Human:

Sandro Huenchuguala & Birgitta Sjödén & Bengt Mannervik & Juan Segura-Aguilar
Novel Alpha-Synuclein Oligomers Formed with the Aminochrome-Glutathione Conjugate
Are Not Neurotoxic
Neurotox Res. 2019 Feb;35(2):432-440.



EB11713 (0.1 μ g/ml) staining of Human Amygdala (A) and fetal Mouse (B) Brain lysate (35 μ g protein in RIPA buffer). Detected by chemiluminescence.



EB11713 (5 μ g/ml) staining of paraffin embedded Human Cerebellum. Steamed antigen retrieval with citrate buffer pH 6, AP-staining.