



UK Office

Everest Biotech Ltd

Cherwell Innovation Centre
77 Heyford Park
Upper Heyford
Oxfordshire
OX25 5HD
UK

Enquiries:

info@everestbiotech.com

Sales:

sales@everestbiotech.com

Tech support:

support@everestbiotech.com

Tel: +44 (0)1869 238326

Fax: +44 (0)1869 238327

US Office

Everest Biotech c/o Abcore

405 Maple Street, Suite A106
Ramona,
CA 92065
USA

Inquiries:

info@everestbiotech.com

Sales:

usasales@everestbiotech.com

Tech support:

support@everestbiotech.com

Tel: 888-320-4628 (toll-free)

Fax: 888-841-9041

www.everestbiotech.com

**Research Use Only. Not for
diagnostic or therapeutic use.**

EB11714 - Goat Anti-Alpha-synuclein (NACP140) Antibody

Size: 100µg specific antibody in 200µl



Target Protein

Principal Names: alpha-synuclein, NACP, non A-beta component of AD amyloid, PARK1, PARK4, PD1, SNCA, synuclein alpha-140, synuclein, alpha (non A4 component of amyloid precursor)

Official Symbol: SNCA

Accession Number(s): NP_000336.1

Human GeneID(s): [6622](#)

Important Comments: This antibody is expected to recognize reported isoform NACP140 (NP_000336.1) only. Reported variants represent identical protein: NP_000336.1, NP_001139527.1, NP_001139526.1

Immunogen

Peptide with sequence C-KDQLGKNEEGAPQE, from the internal region of the protein sequence according to NP_000336.1.

Please note the [peptide](#) is available for sale.

Purification and Storage

Purified from goat serum by ammonium sulphate precipitation followed by antigen affinity chromatography using the immunizing peptide.

Supplied at 0.5 mg/ml in Tris saline, 0.02% sodium azide, pH7.3 with 0.5% bovine serum albumin.

Aliquot and store at -20°C. Minimize freezing and thawing.

Applications Tested

Peptide ELISA: antibody detection limit dilution 1:32000.

Western blot: Approx 17kDa band observed in Human Brain (Amygdala) lysates (calculated MW of 14.5kDa according to NP_000336.1). This molecular weight is routinely observed by other sources. Recommended concentration: 0.1-0.3µg/ml. Primary incubation was 1 hour.

IHC: Paraffin embedded Human Brain (Cerebellum). Recommended concentration: 5µg/ml.

Species Reactivity

Tested: Human

Expected from sequence similarity: Human, Pig

Specific Reference

This antibody has been successfully used in WB and IF on Rat:

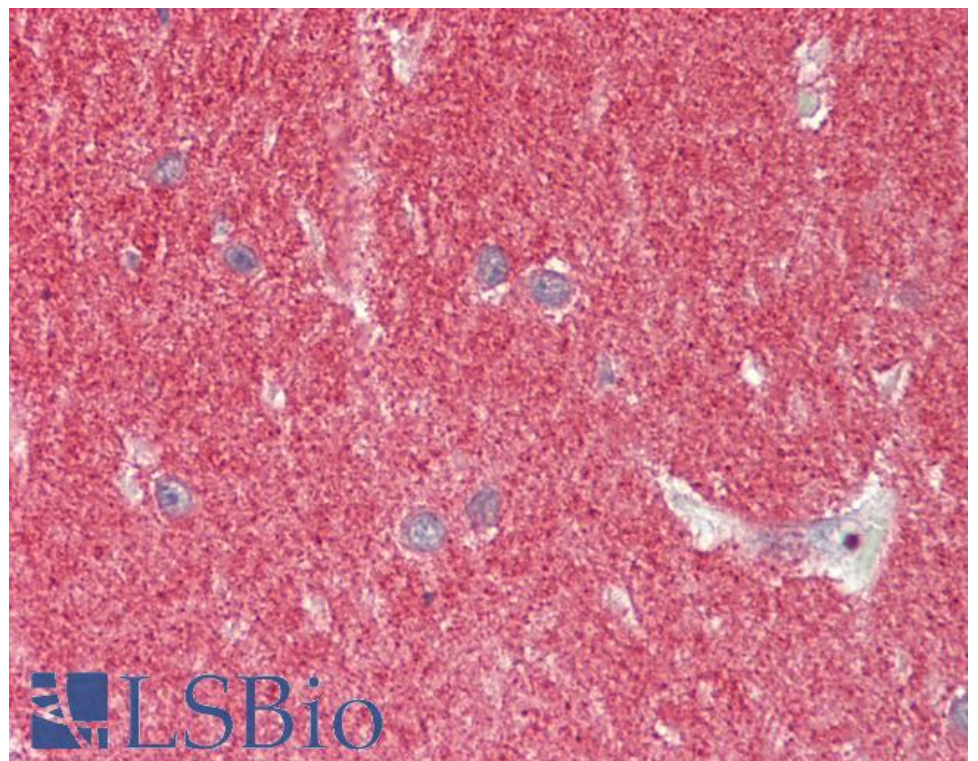
Muñoz P, Cardenas S, Huenchuguala S, Briceño A, Couve E, Paris I, Segura-Aguilar J.

DT-Diaphorase Prevents Aminochrome-Induced Alpha-Synuclein Oligomer Formation and Neurotoxicity. Toxicol Sci. 2015 May;145(1):37-47.

PMID: 25634539



EB11714 (0.1µg/ml) staining of Human Amygdala lysate (35µg protein in RIPA buffer). Detected by chemiluminescence.



EB11714 (5µg/ml) staining of paraffin embedded Human Cerebellum. Steamed antigen retrieval with citrate buffer Ph 6, AP-staining.