



Everest Biotech Ltd
Cherwell Innovation Centre
77 Heyford Park
Upper Heyford
Oxfordshire
OX25 5HD, United Kingdom

everestbiotech.com

sales@everestbiotech.com

support@everestbiotech.com

Tel +44 1869 238326

Fax +44 1869 238327

**Research Use Only. Not for
diagnostic or therapeutic use.**

Storage: For long-term storage
keep aliquots at -20°C. (Store no
longer than 12 months at 4°C).
Minimize freezing and thawing.

EB05869 - Goat Anti-ALS2CR1 / NIF3L1 Antibody

Size: 100µg specific antibody in 200µl



Target Protein

Principal Names: OTTHUMP00000206192, OTTHUMP00000206191, OTTHUMP00000206190, NIF3 NGG1 interacting factor 3-like 1, amyotrophic lateral sclerosis 2 (juvenile) chromosome region, candidate 1, NIF3 (Ngg1 interacting factor 3, S.pombe homolog)-like 1, MDS015, CALS-7, NIF3 NGG1 interacting factor 3-like 1 (S. pombe), ALS2CR1, NIF3L1

Official Symbol: NIF3L1

Accession Number(s): NP_001129511.1; NP_068596.2

Human GeneID(s): [60491](#)

Non-Human GeneID(s): 65102 (mouse)

Important Comments: This antibody is expected to recognise both reported isoforms. Variants (NP_001135827.1; NP_068596.2) encode the same isoform.

Immunogen

Peptide with sequence C-ILSETDRDPLQVV, from the C Terminus of the protein sequence according to NP_001129511.1; NP_068596.2.

Please note the [peptide](#) is available for sale.

Purification and Storage

Purified from goat serum by ammonium sulphate precipitation followed by antigen affinity chromatography using the immunizing peptide.

Supplied at 0.5 mg/ml in Tris saline, 0.02% sodium azide, pH7.3 with 0.5% bovine serum albumin.

Aliquot and store at -20°C. Minimize freezing and thawing.

Applications Tested

Peptide ELISA: antibody detection limit dilution 1:32000.

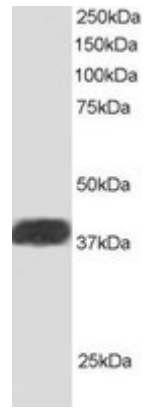
Western blot: Approx 40kDa band seen in Human Heart and Human Testis extracts [Predicted MW of approx. 39kDa according to NP_068596]. Recommended for use at 0.2-1µg/ml.

IHC: In paraffin embedded Human Breast shows strong cytoplasm staining in epithelial and myoepithelial duct cells. Recommended concentration, 2-4µg/ml.

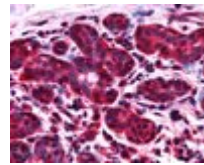
Species Reactivity

Tested: Human

Expected from sequence similarity: Human, Mouse



EB05869 staining (1ug/ml) of Human Heart lysate (RIPA buffer, 30ug total protein per lane). Primary incubated for 1 hour. Detected by western blot using chemiluminescence.



EB05869 (2.5µg/ml) staining of paraffin embedded Human Breast. Steamed antigen retrieval with citrate buffer pH 6, AP-staining.