



## UK Office

### Everest Biotech Ltd

Cherwell Innovation Centre  
77 Heyford Park  
Upper Heyford  
Oxfordshire  
OX25 5HD  
UK

Enquiries:

[info@everestbiotech.com](mailto:info@everestbiotech.com)

Sales:

[sales@everestbiotech.com](mailto:sales@everestbiotech.com)

Tech support:

[support@everestbiotech.com](mailto:support@everestbiotech.com)

Tel: +44 (0)1869 238326

[www.everestbiotech.com](http://www.everestbiotech.com)

**Research Use Only. Not for  
diagnostic or therapeutic use.**

## EB12973 - Goat Anti-ALT1 / GPT1 (aa391-405) Antibody

Size: 100µg specific antibody in 200µl



### Target Protein

**Principal Names:** GPT, glutamic-pyruvate transaminase (alanine aminotransferase), AAT1, ALT1, GPT1, GPT 1, alanine aminotransferase 1, glutamate pyruvate transaminase 1, glutamic--alanine transaminase 1, glutamic--pyruvic transaminase 1, glutamic-alanine transaminase 1

**Official Symbol:** GPT

**Accession Number(s):** NP\_005300.1

**Human GeneID(s):** [2875](#)

### Immunogen

Peptide with sequence KLTEQVFNEAPGISC, from the internal region of the protein sequence according to NP\_005300.1.

Please note the [peptide](#) is available for sale.

### Purification and Storage

Purified from goat serum by ammonium sulphate precipitation followed by antigen affinity chromatography using the immunizing peptide.

Supplied at 0.5 mg/ml in Tris saline, 0.02% sodium azide, pH7.3 with 0.5% bovine serum albumin.

Aliquot and store at -20°C. Minimize freezing and thawing.

### Applications Tested

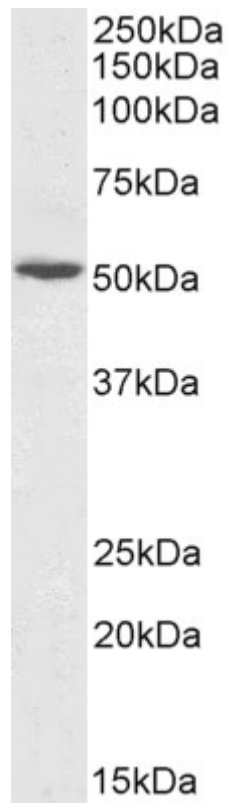
**Peptide ELISA:** antibody detection limit dilution 1:128000.

**Western blot:** Approx 52kDa band observed in Human Liver lysates (calculated MW of 54.6kDa according to NP\_005300.1). Recommended concentration: 0.1-0.3µg/ml. Primary incubation 1 hour at room temperature.

### Species Reactivity

**Tested:** Human

**Expected from sequence similarity:** Human



EB12973 (0.1 $\mu$ g/ml) staining of Human Liver lysate (35 $\mu$ g protein in RIPA buffer). Detected by chemiluminescence.