



## UK Office

### Everest Biotech Ltd

Cherwell Innovation Centre  
77 Heyford Park  
Upper Heyford  
Oxfordshire  
OX25 5HD  
UK

Enquiries:

[info@everestbiotech.com](mailto:info@everestbiotech.com)

Sales:

[sales@everestbiotech.com](mailto:sales@everestbiotech.com)

Tech support:

[support@everestbiotech.com](mailto:support@everestbiotech.com)

Tel: +44 (0)1869 238326

[www.everestbiotech.com](http://www.everestbiotech.com)

**Research Use Only. Not for  
diagnostic or therapeutic use.**

## EB12625 - Goat Anti-AMHR2 (aa88-99) Antibody

Size: 100µg specific antibody in 200µl



### Target Protein

**Principal Names:** AMHR2, anti-Mullerian hormone receptor, type II, AMHR, MISR2, MISRII, MR11, AMH type II receptor, MIS type II receptor, Muellerian inhibiting substance type II receptor, Mullerian inhibiting substance type II receptor, anti-Muellerian hormone type II receptor

**Official Symbol:** AMHR2

**Accession Number(s):** NP\_065434.1; NP\_001158162.1; NP\_001158163.1

**Human GeneID(s):** [269](#)

**Important Comments:** This antibody is expected to recognize all reported isoforms (NP\_065434.1; NP\_001158162.1; NP\_001158163.1).

### Immunogen

Peptide with sequence ESLHCDPSPRAH, from the internal region of the protein sequence according to NP\_065434.1; NP\_001158162.1; NP\_001158163.1.

Please note the [peptide](#) is available for sale.

### Purification and Storage

Purified from goat serum by ammonium sulphate precipitation followed by antigen affinity chromatography using the immunizing peptide.

Supplied at 0.5 mg/ml in Tris saline, 0.02% sodium azide, pH7.3 with 0.5% bovine serum albumin.

Aliquot and store at -20°C. Minimize freezing and thawing.

### Applications Tested

**Peptide ELISA:** antibody detection limit dilution 1:128000.

**Western blot:** Approx. 60+65kDa bands were observed in lysates of cell line MCF7 (calculated MW of 62.7kDa according to NP\_065434.1). Recommended concentration: 0.3-1µg/ml. Primary incubation 1 hour at room temperature.

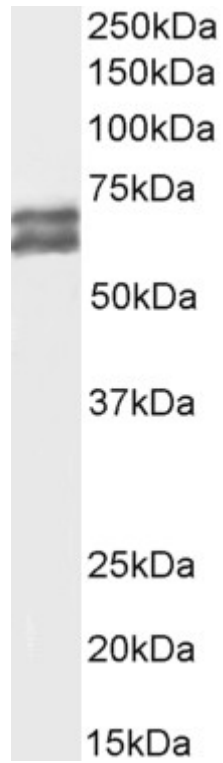
**Immunofluorescence:** Strong expression of the protein seen in MCF7 cells. Recommended concentration: 10µg/ml.

**Flow Cytometry:** Flow cytometric analysis of MCF7 cells. Recommended concentration: 10µg/ml.

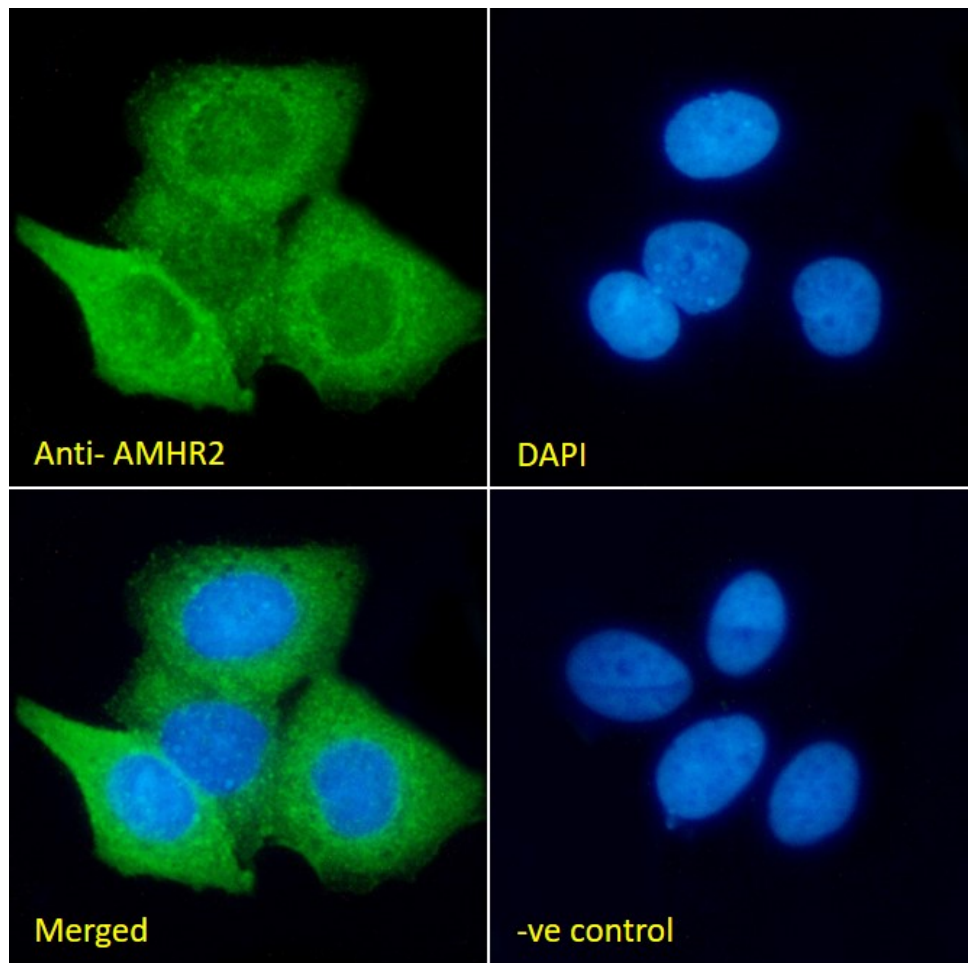
### Species Reactivity

**Tested:** Human

**Expected from sequence similarity:** Human

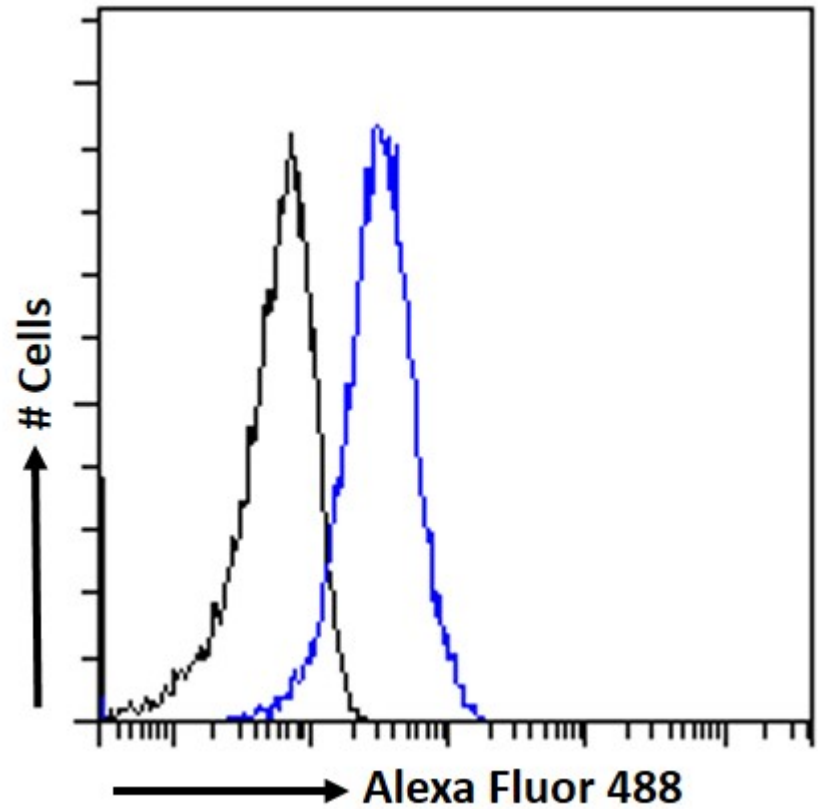


EB12625 (1µg/ml) staining of MCF7 cell lysate (35µg protein in RIPA buffer). Detected by chemiluminescence.



EB12625 Immunofluorescence analysis of paraformaldehyde fixed MCF7 cells, permeabilized with 0.15% Triton. Primary incubation 1hr (10ug/ml) followed by Alexa Fluor 488 secondary antibody (2ug/ml), showing cytoplasmic and some nuclear staining. The nuclear stain is DAPI (blue). Negative control: Unimmunized goat IgG (10ug/ml)

followed by Alexa Fluor 488 secondary antibody (2ug/ml).



EB12625 Flow cytometric analysis of paraformaldehyde fixed MCF7 cells (blue line), permeabilized with 0.5% Triton. Primary incubation 1hr (10ug/ml) followed by Alexa Fluor 488 secondary antibody (1ug/ml). IgG control: Unimmunized goat IgG (black line) followed by Alexa Fluor 488 secondary antibody.