



UK Office

Everest Biotech Ltd

Cherwell Innovation Centre
77 Heyford Park
Upper Heyford
Oxfordshire
OX25 5HD
UK

Enquiries:

info@everestbiotech.com

Sales:

sales@everestbiotech.com

Tech support:

support@everestbiotech.com

Tel: +44 (0)1869 238326

Fax: +44 (0)1869 238327

US Office

Everest Biotech c/o Abcore

405 Maple Street, Suite A106
Ramona,
CA 92065
USA

Inquiries:

info@everestbiotech.com

Sales:

usasales@everestbiotech.com

Tech support:

support@everestbiotech.com

Tel: 888-320-4628 (toll-free)

Fax: 888-841-9041

www.everestbiotech.com

**Research Use Only. Not for
diagnostic or therapeutic use.**

EB12626 - Goat Anti-AMHR2 Antibody

Size: 100µg specific antibody in 200µl



Target Protein

Principal Names: AMHR2, anti-Mullerian hormone receptor, type II, AMHR, MISR2, MISRII, MRII, AMH type II receptor, MIS type II receptor, Muellerian inhibiting substance type II receptor, Mullerian inhibiting substance type II receptor, anti-Muellerian hormone type II receptor

Official Symbol: AMHR2

Accession Number(s): NP_065434.1; NP_001158163.1

Human GeneID(s): [269](#)

Important Comments: This antibody is expected to recognize isoform 1 (NP_065434.1) and isoform 3 (NP_001158163.1).

Immunogen

Peptide with sequence HPQESHPPFESCPR, from the internal region of the protein sequence according to NP_065434.1; NP_001158163.1.

Please note the [peptide](#) is available for sale.

Purification and Storage

Purified from goat serum by ammonium sulphate precipitation followed by antigen affinity chromatography using the immunizing peptide.

Supplied at 0.5 mg/ml in Tris saline, 0.02% sodium azide, pH7.3 with 0.5% bovine serum albumin.

Aliquot and store at -20°C. Minimize freezing and thawing.

Applications Tested

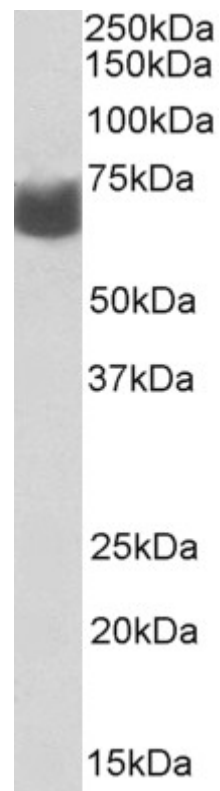
Peptide ELISA: antibody detection limit dilution 1:128000.

Western blot: Approx 65kDa band observed in Human Ovary lysates (calculated MW of 62.7kDa according to NP_065434.1). Recommended concentration: 1-3µg/ml.

Species Reactivity

Tested: Human

Expected from sequence similarity: Human



EB12626 (2 μ g/ml) staining of Human Ovary lysate (35 μ g protein in RIPA buffer). Primary incubation was 1 hour.
Detected by chemiluminescence.