



UK Office

Everest Biotech Ltd

Cherwell Innovation Centre
77 Heyford Park
Upper Heyford
Oxfordshire
OX25 5HD
UK

Enquiries:

info@everestbiotech.com

Sales:

sales@everestbiotech.com

Tech support:

support@everestbiotech.com

Tel: +44 (0)1869 238326

Fax: +44 (0)1869 238327

US Office

Everest Biotech c/o Abcore

405 Maple Street, Suite A106
Ramona,
CA 92065
USA

Inquiries:

info@everestbiotech.com

Sales:

usasales@everestbiotech.com

Tech support:

support@everestbiotech.com

Tel: 888-320-4628 (toll-free)

Fax: 888-841-9041

www.everestbiotech.com

**Research Use Only. Not for
diagnostic or therapeutic use.**

EB06630 - Goat Anti-AMID / PRG3 Antibody

Size: 100µg specific antibody in 200µl



Target Protein

Principal Names: AMID, PRG3, apoptosis-inducing factor (AIF)-like mitochondrion-associated inducer of death, 5430437E11Rik, p53-responsive gene 3, apoptosis-inducing factor (AIF)-homologous mitochondrion-associated inducer of death, AIFM2, apoptosis-inducing factor, mitochondrion-associated, 2, RP11-367H5.2, OTTHUMP00000019740, apoptosis-inducing factor (AIF)-homologous mitochondrion-associated inducer of death

Official Symbol: AIFM2

Accession Number(s): NP_116186.1

Human GeneID(s): [84883](#)

Immunogen

Peptide with sequence GSQVSVESGALHC, from the N Terminus of the protein sequence according to NP_116186.1.

Please note the [peptide](#) is available for sale.

Purification and Storage

Purified from goat serum by ammonium sulphate precipitation followed by antigen affinity chromatography using the immunizing peptide.

Supplied at 0.5 mg/ml in Tris saline, 0.02% sodium azide, pH7.3 with 0.5% bovine serum albumin.

Aliquot and store at -20°C. Minimize freezing and thawing.

Applications Tested

Peptide ELISA: antibody detection limit dilution 1:128000.

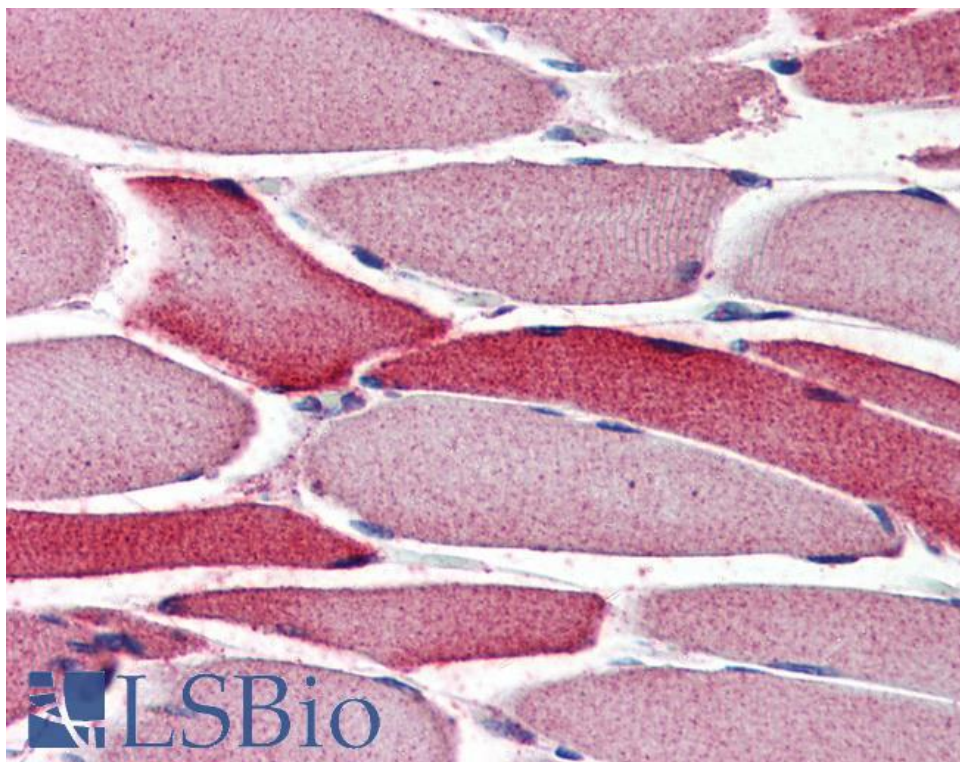
Western blot: Preliminary experiments gave an approx 48-50kDa band in Human Colon and Duodenum lysates after 0.1µg/ml antibody staining. Please note that currently we cannot find an explanation in the literature for the band we observe given the calculated size of 40.5kDa according to NP_116186. The 48-50kDa band was successfully blocked by incubation with the immunizing peptide.

IHC: Paraffin embedded Human Skeletal Muscle and Heart. Recommended concentration: 4µg/ml.

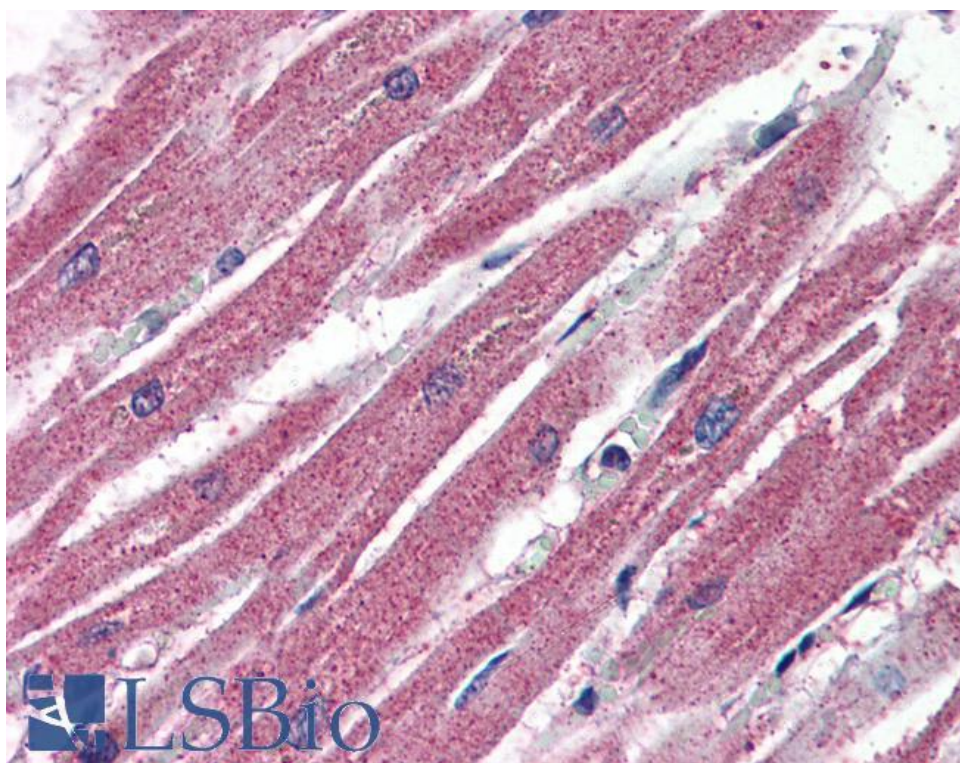
Species Reactivity

Tested: Human

Expected from sequence similarity: Human



EB06630 (4µg/ml) staining of paraffin embedded Human Skeletal Muscle. Steamed antigen retrieval with citrate buffer pH 6, AP-staining.



EB06630 (4µg/ml) staining of paraffin embedded Human Heart. Steamed antigen retrieval with citrate buffer pH 6, AP-staining.