



Everest Biotech Ltd
Cherwell Innovation Centre
77 Heyford Park
Upper Heyford
Oxfordshire
OX25 5HD, United Kingdom

everestbiotech.com

sales@everestbiotech.com

support@everestbiotech.com

Tel +44 1869 238326

Fax +44 1869 238327

Research Use Only. Not for diagnostic or therapeutic use.

Storage: For long-term storage keep aliquots at -20°C. (Store no longer than 12 months at 4°C). Minimize freezing and thawing.

EB05935 - Goat Anti-Amisyn / STXBP6 Antibody

Size: 100µg specific antibody in 200µl



Target Protein

Principal Names: OTTHUMP00000178754, FLJ39638, syntaxin binding protein 6, amisyn, HSPC156, amisyn, syntaxin binding protein 6 (amisyn), STXBP6

Official Symbol: STXBP6

Accession Number(s): NP_054897.4

Human GeneID(s): [29091](#)

Non-Human GeneID(s): 217517 (mouse)

Immunogen

Peptide with sequence SAKSAISKEIFAP-C, from the N Terminus of the protein sequence according to NP_054897.4.

Please note the [peptide](#) is available for sale.

Purification and Storage

Purified from goat serum by ammonium sulphate precipitation followed by antigen affinity chromatography using the immunizing peptide.

Supplied at 0.5 mg/ml in Tris saline, 0.02% sodium azide, pH7.3 with 0.5% bovine serum albumin.

Aliquot and store at -20°C. Minimize freezing and thawing.

Applications Tested

Peptide ELISA: antibody detection limit dilution 1:32000.

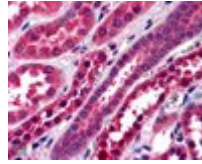
Western blot: Preliminary experiments gave bands at both approx 25kDa and approx 45kDa in Human Brain extracts at 0.1µg/ml. Please note that currently we cannot find an explanation in the literature for the 45kDa band we observe given the predicted size of approx. 24Kda according to NP_054897. We would appreciate any feedback from people in the field - have any results been reported with other antibodies/lysates? Have any splice variants/modified forms been reported?

IHC: In paraffin embedded Human Kidney shows cytoplasm staining of PCT and DCT cells Recommended concentration, 3-5µg/ml.

Species Reactivity

Tested: Human

Expected from sequence similarity: Human, Mouse, Rat, Dog, Cow



EB05935 (3.8 μ g/ml) staining of paraffin embedded Human Kidney. Steamed antigen retrieval with citrate buffer pH 6, AP-staining.