



## UK Office

### Everest Biotech Ltd

Cherwell Innovation Centre  
77 Heyford Park  
Upper Heyford  
Oxfordshire  
OX25 5HD  
UK

Enquiries:

[info@everestbiotech.com](mailto:info@everestbiotech.com)

Sales:

[sales@everestbiotech.com](mailto:sales@everestbiotech.com)

Tech support:

[support@everestbiotech.com](mailto:support@everestbiotech.com)

Tel: +44 (0)1869 238326

[www.everestbiotech.com](http://www.everestbiotech.com)

**Research Use Only. Not for  
diagnostic or therapeutic use.**

## EB10937 - Goat Anti-AMPA1 / GLUR1 (aa264-277) Antibody

Size: 100µg specific antibody in 200µl



### Target Protein

**Principal Names:** GRIA1, glutamate receptor, ionotropic, AMPA 1, GLUH1, GLUR1, GLURA, GluA1, HBGR1, MGC133252, AMPA 1, gluR-1, gluR-A, gluR-K1, glutamate receptor 1

**Official Symbol:** GRIA1

**Accession Number(s):** NP\_000818.2; NP\_001107655.1

**Human GeneID(s):** [2890](#)

**Non-Human GeneID(s):** 14799 (mouse), 50592 (rat)

**Important Comments:** This antibody is expected to recognize both reported isoforms (NP\_000818.2; NP\_001107655.1).

### Immunogen

Peptide with sequence C-KIMQQWKNSDARD, from the internal region of the protein sequence according to NP\_000818.2; NP\_001107655.1.

Please note the [peptide](#) is available for sale.

### Purification and Storage

Purified from goat serum by ammonium sulphate precipitation followed by antigen affinity chromatography using the immunizing peptide.

Supplied at 0.5 mg/ml in Tris saline, 0.02% sodium azide, pH7.3 with 0.5% bovine serum albumin.

Aliquot and store at -20°C. Minimize freezing and thawing.

### Applications Tested

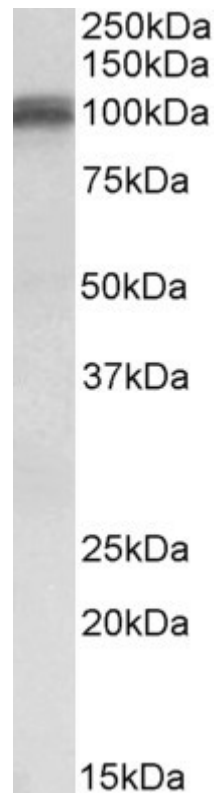
**Peptide ELISA:** antibody detection limit dilution 1:16000.

**Western blot:** Approx 100kDa band observed in Human Brain (Cerebellum) lysates (calculated MW of 102kDa according to NP\_000818.2). Recommended concentration: 0.1-0.3µg/ml. Primary incubation was 1 hour.

### Species Reactivity

**Tested:** Human

**Expected from sequence similarity:** Human, Mouse, Rat, Dog, Cow



EB10937 (0.1µg/ml) staining of Human Cerebellum lysate (35µg protein in RIPA buffer). Detected by chemiluminescence.