



UK Office

Everest Biotech Ltd

Cherwell Innovation Centre
77 Heyford Park
Upper Heyford
Oxfordshire
OX25 5HD
UK

Enquiries:

info@everestbiotech.com

Sales:

sales@everestbiotech.com

Tech support:

support@everestbiotech.com

Tel: +44 (0)1869 238326

www.everestbiotech.com

**Research Use Only. Not for
diagnostic or therapeutic use.**

EB11159 - Goat Anti-Amyloid beta peptide (mouse) Antibody

Size: 100µg specific antibody in 200µl



Target Protein

Principal Names: Abeta, Abpp, Adap, Ag, alzheimer disease amyloid A4 protein homolog, amyloid beta (A4) precursor protein, amyloid beta A4 protein, amyloidogenic glycoprotein, appican, betaApp, Cvap, E030013M08Rik, protease nexin II, App

Official Symbol: App

Accession Number(s): NP_001185752.1; NP_031497.2; NP_001185753.1; NP_001185754.1; NP_001185755.1

Non-Human GeneID(s): 11820 (mouse), 54226 (rat)

Important Comments: This antibody is expected to recognize all reported isoforms of mAPP (NP_001185752.1; NP_031497.2; NP_001185753.1; NP_001185754.1; NP_001185755.1) and to recognize all lengths of the putative mouse Amyloid beta peptide.

Immunogen

Peptide with sequence DAEFGHDSGFVHRHQK-C, from the N Terminus of the protein sequence according to NP_001185752.1; NP_031497.2; NP_001185753.1; NP_001185754.1; NP_001185755.1.

Please note the [peptide](#) is available for sale.

Purification and Storage

Purified from goat serum by ammonium sulphate precipitation followed by antigen affinity chromatography using the immunizing peptide.

Supplied at 0.5 mg/ml in Tris saline, 0.02% sodium azide, pH7.3 with 0.5% bovine serum albumin.

Aliquot and store at -20°C. Minimize freezing and thawing.

Applications Tested

Peptide ELISA: antibody detection limit dilution 1:64000.

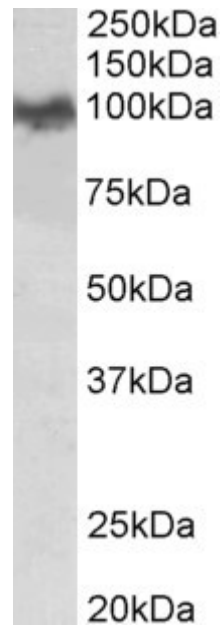
Western blot: Approx 100kDa band observed in Mouse Brain lysates (calculated MW of 86.7kDa according to NP_001185752.1). Recommended concentration: 0.03-0.1µg/ml. Primary incubation was 1 hour.

IHC: Paraffin embedded Human Brain (Cerebellum). Recommended concentration: 5µg/ml.

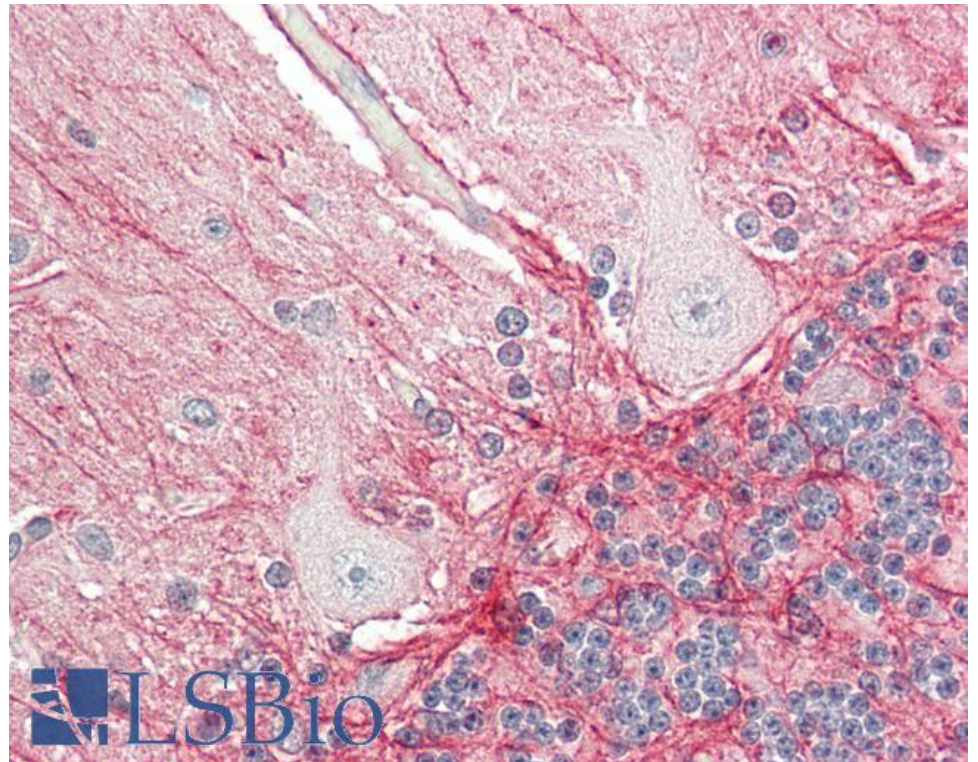
Species Reactivity

Tested: Human, Mouse

Expected from sequence similarity: Mouse, Rat



EB11159 (0.03 μ g/ml) staining of Mouse Brain lysate (35 μ g protein in RIPA buffer). Detected by chemiluminescence.



EB11159 (5 μ g/ml) staining of paraffin embedded Human Cerebellum. Steamed antigen retrieval with citrate buffer Ph 6, AP-staining.