

UK Office

Everest Biotech Ltd

Cherwell Innovation Centre
77 Heyford Park
Upper Heyford
Oxfordshire
OX25 5HD
UK

Enquiries:

info@everestbiotech.com

Sales:

sales@everestbiotech.com

Tech support:

support@everestbiotech.com

Tel: +44 (0)1869 238326

www.everestbiotech.com

**Research Use Only. Not for
diagnostic or therapeutic use.**

EB09771 - Goat Anti-ANAPC11 Antibody

Size: 100µg specific antibody in 200µl



Target Protein

Principal Names: ANAPC11, anaphase promoting complex subunit 11, APC11, Apc11p, HSPC214, MGC882, APC11 anaphase promoting complex subunit 11, anaphase promoting complex subunit 11 (yeast APC11 homolog)

Official Symbol: ANAPC11

Accession Number(s): NP_001002244.1; NP_057560.8

Human GeneID(s): [51529](#)

Important Comments: This antibody is expected to recognize. Reported variants represent identical protein: NP_057560.8, NP_001002248.1, NP_001002245.1, NP_001002246.1, NP_001002247.1, NP_001002249.1

Immunogen

Peptide with sequence PALDQETSSLLRCTS, from the Internal region of the protein sequence according to NP_001002244.1; NP_057560.8.

Please note the [peptide](#) is available for sale.

Purification and Storage

Purified from goat serum by ammonium sulphate precipitation followed by antigen affinity chromatography using the immunizing peptide.

Supplied at 0.5 mg/ml in Tris saline, 0.02% sodium azide, pH7.3 with 0.5% bovine serum albumin.

Aliquot and store at -20°C. Minimize freezing and thawing.

Applications Tested

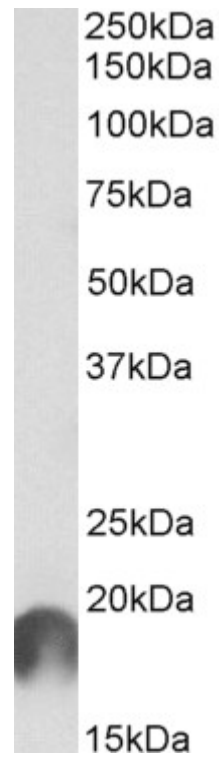
Peptide ELISA: antibody detection limit dilution 1:32000.

Western blot: Approx 19kDa band observed in Human Brain (Cerebral and Frontal Cortex, Hippocampus) lysates (calculated MW of 20.6kDa according to NP_001002244.1). Recommended concentration: 0.3-1µg/ml.

Species Reactivity

Tested: Human

Expected from sequence similarity: Human



EB09771 (1 μ g/ml) staining of Cerebral Cortex lysate (35 μ g protein in RIPA buffer). Primary incubation was 1 hour. Detected by chemiluminescence.