



UK Office

Everest Biotech Ltd

Cherwell Innovation Centre
77 Heyford Park
Upper Heyford
Oxfordshire
OX25 5HD
UK

Enquiries:

info@everestbiotech.com

Sales:

sales@everestbiotech.com

Tech support:

support@everestbiotech.com

Tel: +44 (0)1869 238326

www.everestbiotech.com

**Research Use Only. Not for
diagnostic or therapeutic use.**

EB10272 - Goat Anti-ANGPT1 Antibody

Size: 100µg specific antibody in 200µl



Target Protein

Principal Names: AGP1, AGPT, ANG1, angiotensin 1, ANGPT1

Official Symbol: ANGPT1

Accession Number(s): NP_001137.2

Human GeneID(s): [284](#)

Non-Human GeneID(s): 11600 (mouse), 89807 (rat)

Immunogen

Peptide with sequence C-PDFSSQKLQH, from the internal region of the protein sequence according to NP_001137.2.

Please note the [peptide](#) is available for sale.

Purification and Storage

Purified from goat serum by ammonium sulphate precipitation followed by antigen affinity chromatography using the immunizing peptide.

Supplied at 0.5 mg/ml in Tris saline, 0.02% sodium azide, pH7.3 with 0.5% bovine serum albumin.

Aliquot and store at -20°C. Minimize freezing and thawing.

Applications Tested

Peptide ELISA: antibody detection limit dilution 1:32000.

Western blot: In transfected HEK293 transiently expressing full-length Human ANGPT1 (myc and DYKDDDDK tagged), a band of approx. 48kDa was observed. No bands were observed in mock-transfected HEK293 and the 48kDa plus a 75kDa band was observed using anti-DYKDDDDK tag antibody.

An approx. 48kDa band was also observed in lysates of cell line K562 and was successfully blocked by incubation with the immunizing peptide. Recommended concentration: 0.1-1µg/ml. Primary incubation 1 hour at room temperature.

Immunofluorescence: Strong expression of the protein seen in the plasma membranes of A431 and HeLa cells. Recommended concentration: 10µg/ml.

Flow Cytometry: Flow cytometric analysis of A431 cells. Recommended concentration: 10ug/ml.

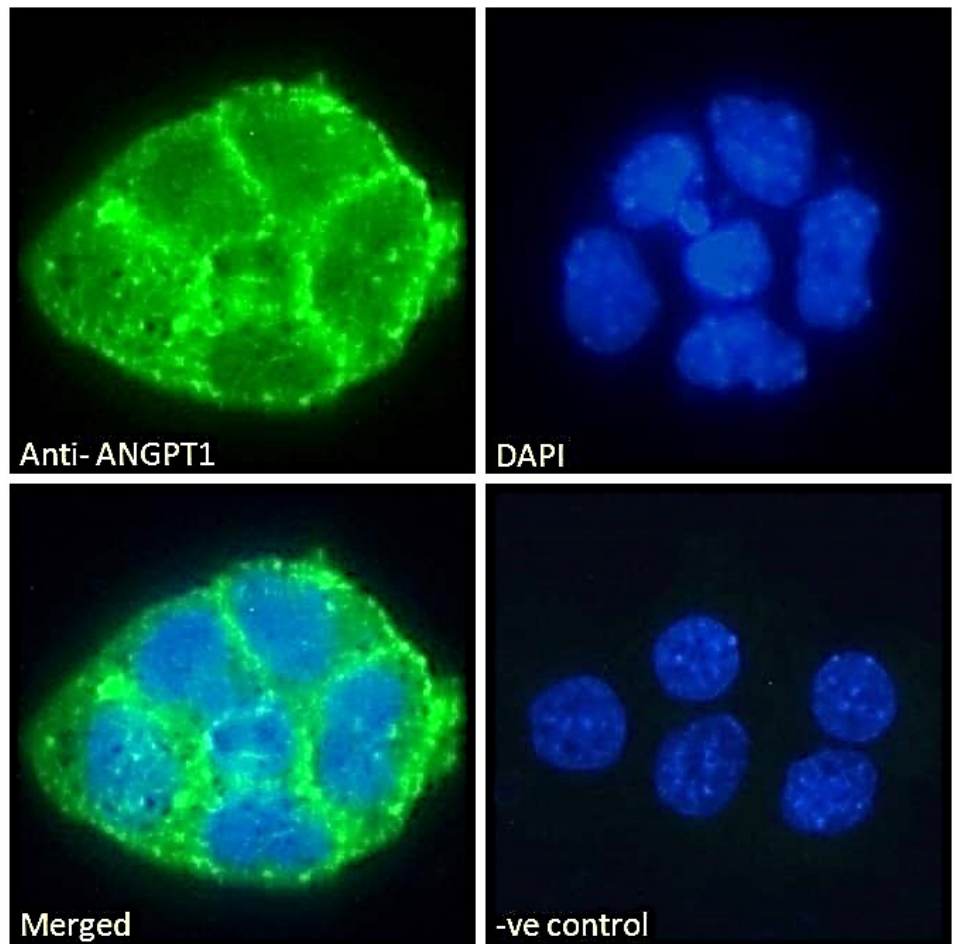
Species Reactivity

Tested: Human

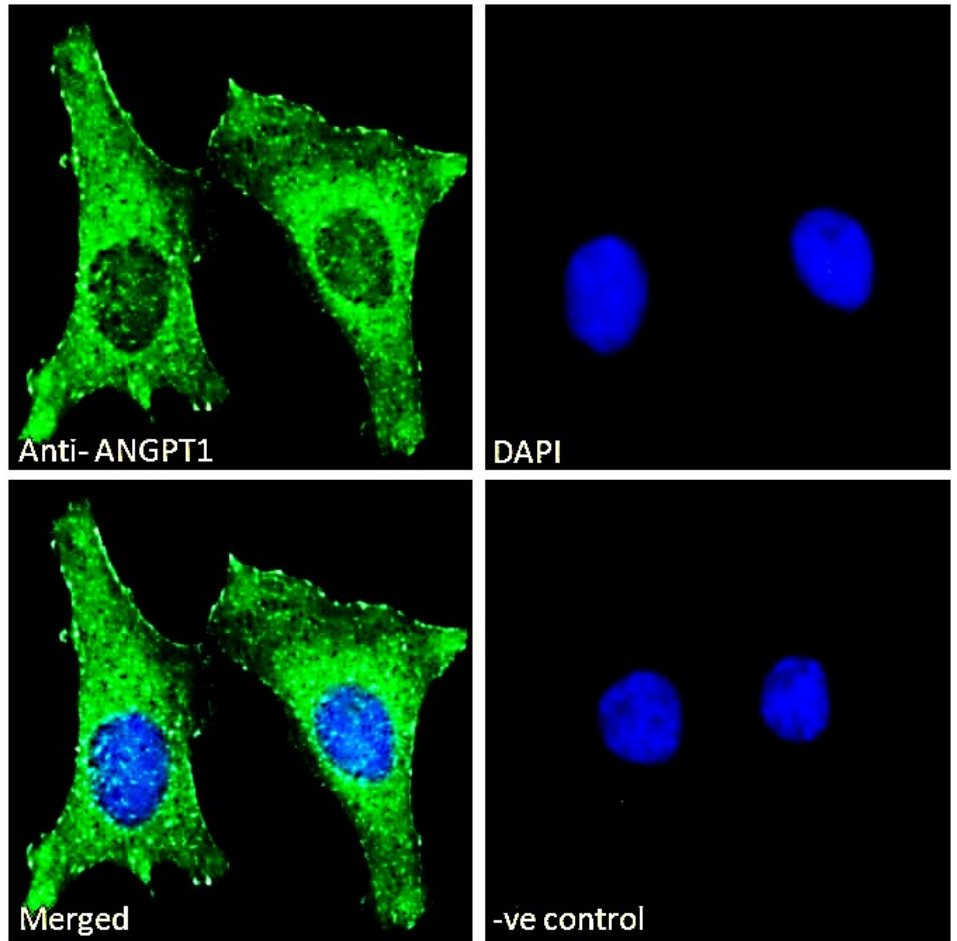
Expected from sequence similarity: Human, Mouse, Rat, Dog, Cow, Pig



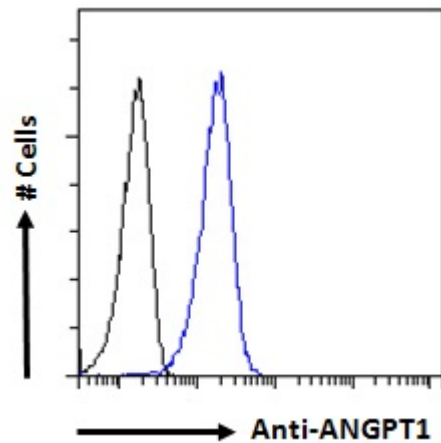
EB10272 (0.1µg/ml) staining of K56 cell lysate (A) + peptide (B) (35µg protein in RIPA buffer). Detected by chemiluminescence.



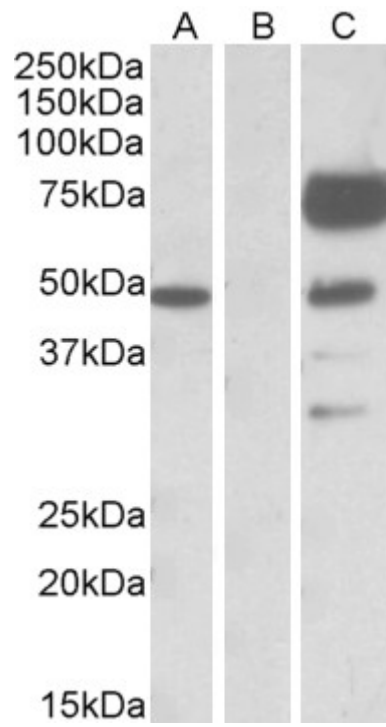
EB10272 Immunofluorescence analysis of paraformaldehyde fixed A431 cells, permeabilized with 0.15% Triton. Primary incubation 1hr (10ug/ml) followed by Alexa Fluor 488 secondary antibody (2ug/ml), showing plasma membrane staining. The nuclear stain is DAPI (blue). Negative control: Unimmunized goat IgG (10ug/ml) followed by Alexa Fluor 488 secondary antibody (2ug/ml).



EB10272 Immunofluorescence analysis of paraformaldehyde fixed HeLa cells, permeabilized with 0.15% Triton. Primary incubation 1hr (10ug/ml) followed by Alexa Fluor 488 secondary antibody (2ug/ml), showing plasma membrane and cytoplasmic staining. The nuclear stain is DAPI (blue). Negative control: Unimmunized goat IgG (10ug/ml) followed by Alexa Fluor 488 secondary antibody (2ug/ml).



EB10272 Flow cytometric analysis of paraformaldehyde fixed A431 cells (blue line), permeabilized with 0.5% Triton. Primary incubation 1hr (10ug/ml) followed by Alexa Fluor 488 secondary antibody (1ug/ml). IgG control: Unimmunized goat IgG (black line) followed by Alexa Fluor 488 secondary antibody.



HEK293 lysate (10ug protein in RIPA buffer) overexpressing Human ANGPT1 with DYKDDDDK tag probed with EB10272(1ug/ml) in Lane A and probed with anti- DYKDDDDK Tag (1/1000) in lane C. Mock-transfected HEK293 probed with EB10272 (1mg/ml) in Lane B. Primary incubations were for 1 hour. Detected by chemiluminescence.