



Everest Biotech Ltd
Cherwell Innovation Centre
77 Heyford Park
Upper Heyford
Oxfordshire
OX25 5HD, United Kingdom

everestbiotech.com

sales@everestbiotech.com

support@everestbiotech.com

Tel +44 1869 238326

Fax +44 1869 238327

Research Use Only. Not for diagnostic or therapeutic use.

Storage: For long-term storage keep aliquots at -20°C. (Store no longer than 12 months at 4°C). Minimize freezing and thawing.

EB06104 - Goat Anti-ANILLIN / Scraps (C Terminus) Antibody

Size: 100µg specific antibody in 200µl



Target Protein

Principal Names: scra, DKFZp779A055, anillin, actin binding protein, anillin (Drosophila Scraps homolog), actin binding protein, anillin, actin binding protein (scraps homolog, Drosophila), ANILLIN, Scraps, ANLN

Official Symbol: ANLN

Accession Number(s): NP_061155.2

Human GeneID(s): [54443](#)

Non-Human GeneID(s): 68743 (mouse)

Immunogen

Peptide with sequence WQPDACYKPIGKP, from the C Terminus of the protein sequence according to NP_061155.2.

Please note the [peptide](#) is available for sale.

Purification and Storage

Purified from goat serum by ammonium sulphate precipitation followed by antigen affinity chromatography using the immunizing peptide.

Supplied at 0.5 mg/ml in Tris saline, 0.02% sodium azide, pH7.3 with 0.5% bovine serum albumin.

Aliquot and store at -20°C. Minimize freezing and thawing.

Applications Tested

Peptide ELISA: antibody detection limit dilution 1:64000.

Western blot: Preliminary experiments gave an approx 75kDa band in Mouse Brain lysates after 0.3µg/ml antibody staining. Please note that currently we cannot find an explanation in the literature for the band we observe given the calculated size of 124kDa according to NP_061155.2. The 75kDa band was successfully blocked by incubation with the immunizing peptide. We would appreciate any feedback from people in the field - have any results been reported with other antibodies/lysates? Have any further splice variants/modified forms been reported?

IHC: In paraffin embedded Human Kidney shows staining of nuclei in some cells of renal tubules.. Recommended concentration, 3-10µg/ml.

Species Reactivity

Tested: Human

Expected from sequence similarity: Human, Mouse, Cow

Specific Reference

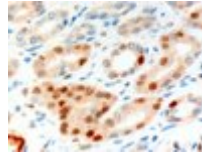
The goat polyclonal antibody used in this paper was manufactured by us:

Hall PA, Todd CB, Hyland PL, McDade SS, Grabsch H, Dattani M, Hillan KJ, Russell SE.

The septin-binding protein anillin is overexpressed in diverse human tumors.

Clin Cancer Res. 2005 Oct 1;11(19 Pt 1):6780-6.

PMID: 16203764



EB06104 (10 μ g/ml) staining of paraffin embedded Human Kidney. Microwaved antigen retrieval with Tris/EDTA buffer pH9, HRP-staining.