



UK Office

Everest Biotech Ltd

Cherwell Innovation Centre
77 Heyford Park
Upper Heyford
Oxfordshire
OX25 5HD
UK

Enquiries:

info@everestbiotech.com

Sales:

sales@everestbiotech.com

Tech support:

support@everestbiotech.com

Tel: +44 (0)1869 238326

Fax: +44 (0)1869 238327

US Office

Everest Biotech c/o Abcore

405 Maple Street, Suite A106
Ramona,
CA 92065
USA

Inquiries:

info@everestbiotech.com

Sales:

usasales@everestbiotech.com

Tech support:

support@everestbiotech.com

Tel: 888-320-4628 (toll-free)

Fax: 888-841-9041

www.everestbiotech.com

**Research Use Only. Not for
diagnostic or therapeutic use.**

EB08835 - Goat Anti-ANKK1 Antibody

Size: 100µg specific antibody in 200µl



Target Protein

Principal Names: ANKK1, ankyrin repeat and kinase domain containing 1, PKK2, X-kinase, protein kinase PKK2

Official Symbol: ANKK1

Accession Number(s): NP_848605.1

Human GeneID(s): [255239](#)

Immunogen

Peptide with sequence C-SRQADPNLHEAEGKT, from the internal region of the protein sequence according to NP_848605.1.

Please note the [peptide](#) is available for sale.

Purification and Storage

Purified from goat serum by ammonium sulphate precipitation followed by antigen affinity chromatography using the immunizing peptide.

Supplied at 0.5 mg/ml in Tris saline, 0.02% sodium azide, pH7.3 with 0.5% bovine serum albumin.

Aliquot and store at -20°C. Minimize freezing and thawing.

Applications Tested

Peptide ELISA: antibody detection limit dilution 1:128000.

Western blot: Approx. 85kDa band observed in Human Brain (Substantia nigra and Amygdala) lysates (calculated MW of 84.6 kDa according to NP_848605.1).

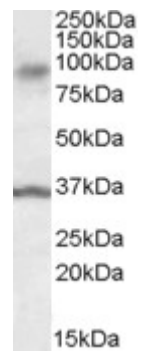
Recommended concentration: 0.1-0.3µg/ml. Primary incubation was 1 hour. An additional band of unknown identity was also consistently observed at 35 kDa. This band was successfully blocked by incubation with the immunising peptide.

IHC: Paraffin embedded Human Prostate. Recommended concentration: 5-10µg/ml.

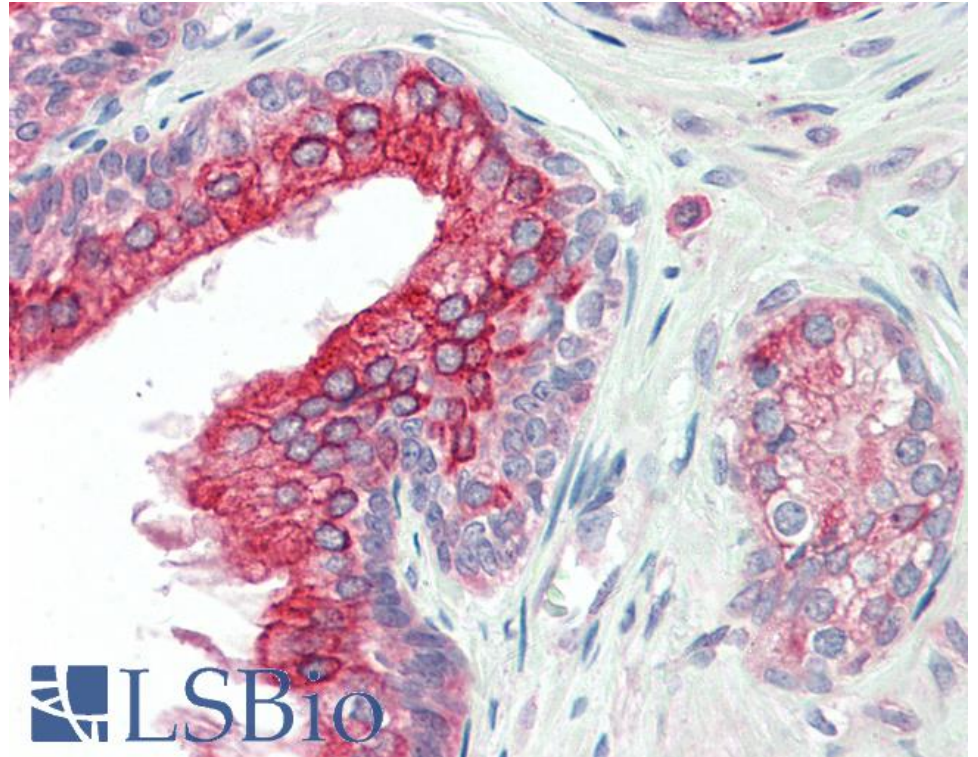
Species Reactivity

Tested: Human

Expected from sequence similarity: Human



EB08835 (0.1µg/ml) staining of Human Substantia Nigra lysate (35µg protein in RIPA buffer). Detected by chemiluminescence.



EB08835 (5µg/ml) staining of paraffin embedded Human Prostate. Steamed antigen retrieval with citrate buffer pH 6, AP-staining.