



Everest Biotech Ltd
Cherwell Innovation Centre
77 Heyford Park
Upper Heyford
Oxfordshire
OX25 5HD, United Kingdom

everestbiotech.com

sales@everestbiotech.com

support@everestbiotech.com

Tel +44 1869 238326

Fax +44 1869 238327

Research Use Only. Not for diagnostic or therapeutic use.

Storage: For long-term storage keep aliquots at -20°C. (Store no longer than 12 months at 4°C). Minimize freezing and thawing.

EB05307 - Goat Anti-Annexin A11 Antibody

Size: 100µg specific antibody in 200µl



Target Protein

Principal Names: OTTHUMP00000019958, OTTHUMP00000019957, RP11-369J21, calyculin-associated annexin 50, autoantigen, 56-kD, annexin XI, CAP50, ANX11, annexin A11, ANXA11

Official Symbol: ANXA11

Accession Number(s): NP_001148.1; NP_665875.1; NP_665876.1

Human GeneID(s): [311](#)

Important Comments: NP_001148.1; NP_665875.1 and NP_665876.1 are variants that encode the same protein.

Immunogen

Peptide with sequence YPGYPPPPGGYPP-C, from the N Terminus of the protein sequence according to NP_001148.1; NP_665875.1; NP_665876.1.

Please note the [peptide](#) is available for sale.

Purification and Storage

Purified from goat serum by ammonium sulphate precipitation followed by antigen affinity chromatography using the immunizing peptide.

Supplied at 0.5 mg/ml in Tris saline, 0.02% sodium azide, pH7.3 with 0.5% bovine serum albumin.

Aliquot and store at -20°C. Minimize freezing and thawing.

Applications Tested

Peptide ELISA: antibody detection limit dilution 1:32000.

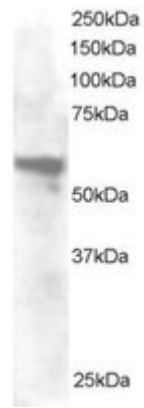
Western blot: Approx 55kDa band seen in HeLa lysate (Predicted MW of approx. 58kDa according to NP_001148.1). Recommended for use at 0.2-1µg/ml.

IHC: In paraffin embedded Human Placenta shows strong staining of Basement Membrane in trophoblasts. Recommended concentration, 3-5µg/ml.

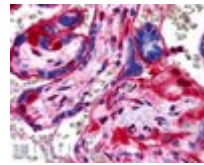
Species Reactivity

Tested: Human

Expected from sequence similarity: Human



EB05307 staining (0.2 μ g/ml) of HeLa lysate (RIPA buffer, 30 μ g total protein per lane). Primary incubated for 1 hour. Detected by western blot using chemiluminescence.



EB05307 (3.8 μ g/ml) staining of paraffin embedded Human Placenta. Steamed antigen retrieval with citrate buffer pH 6, AP-staining.