

UK Office

Everest Biotech Ltd

Cherwell Innovation Centre
77 Heyford Park
Upper Heyford
Oxfordshire
OX25 5HD
UK

Enquiries:

info@everestbiotech.com

Sales:

sales@everestbiotech.com

Tech support:

support@everestbiotech.com

Tel: +44 (0)1869 238326

www.everestbiotech.com

**Research Use Only. Not for
diagnostic or therapeutic use.**

EB09185 - Goat Anti-Annexin I Antibody

Size: 100µg specific antibody in 200µl



Target Protein

Principal Names: annexin I, ANXA1, annexin A1, ANX1, LPC1, annexin I (lipocortin I), lipocortin I

Official Symbol: ANXA1

Accession Number(s): NP_000691.1

Human GeneID(s): [301](#)

Non-Human GeneID(s): 16952 (mouse), 25380 (rat)

Immunogen

Peptide with sequence CQAILDETKGDYEK, from the C Terminus of the protein sequence according to NP_000691.1.

Please note the [peptide](#) is available for sale.

Purification and Storage

Purified from goat serum by ammonium sulphate precipitation followed by antigen affinity chromatography using the immunizing peptide.

Supplied at 0.5 mg/ml in Tris saline, 0.02% sodium azide, pH7.3 with 0.5% bovine serum albumin.

Aliquot and store at -20°C. Minimize freezing and thawing.

Applications Tested

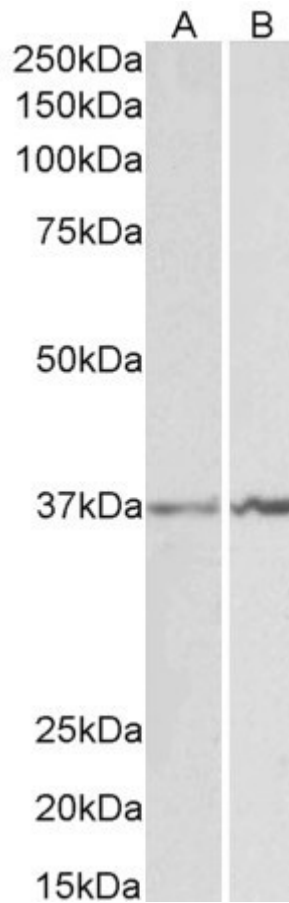
Peptide ELISA: antibody detection limit dilution 1:4000.

Western blot: Approx 37kDa band observed in lysates of cell lines K562 and NIH3T3 (calculated MW of 38.7kDa according to Human NP_000691.1 and Mouse NP_034860.2). Approx 37kDa band observed in Rat and Pig Spleen lysates (calculated MW of 38.7kDa according to Pig NP_001157470.1). Recommended concentration: 1-3µg/ml.

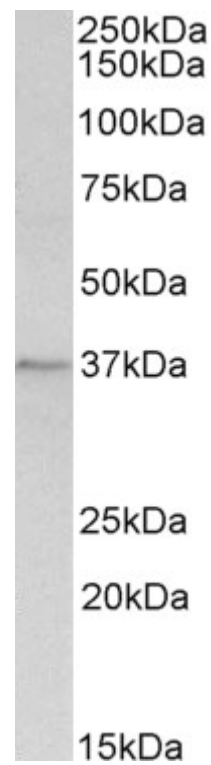
Species Reactivity

Tested: Human, Mouse, Rat, Pig

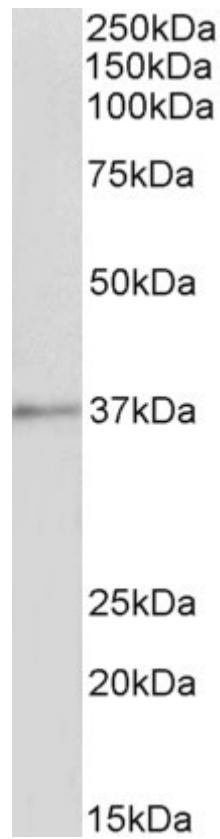
Expected from sequence similarity: Human, Mouse, Rat, Dog, Cow, Pig



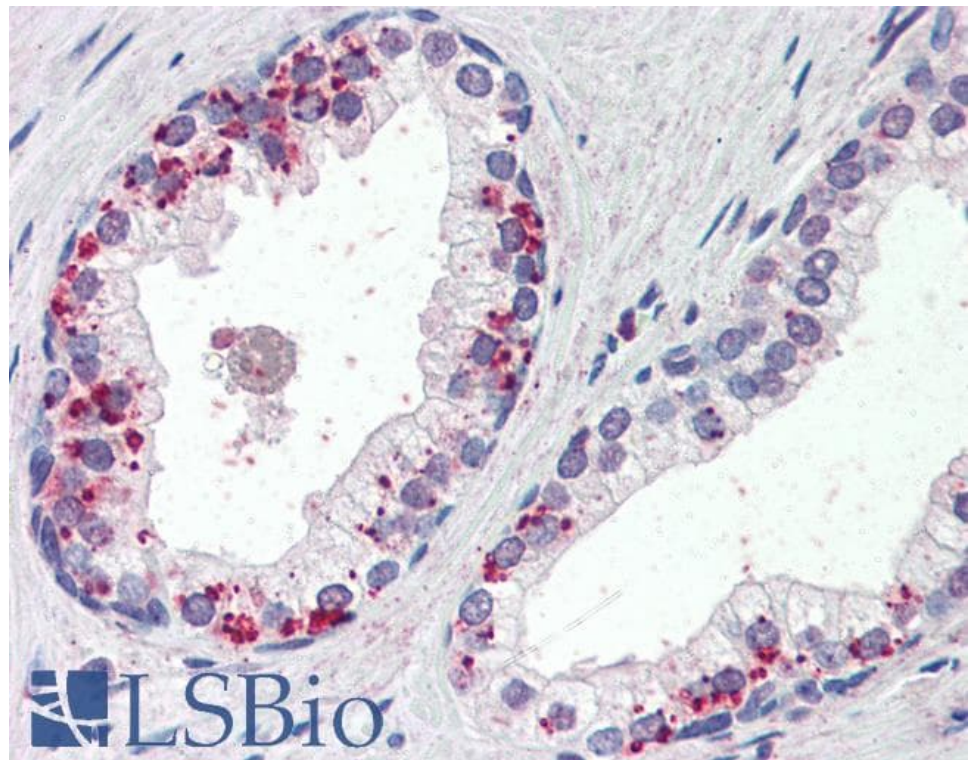
EB09185 (1 μ g/ml) staining of K562 (A) and NIH3T3 (B) lysates (35 μ g protein in RIPA buffer). Primary incubation was 1 hour. Detected by chemiluminescence



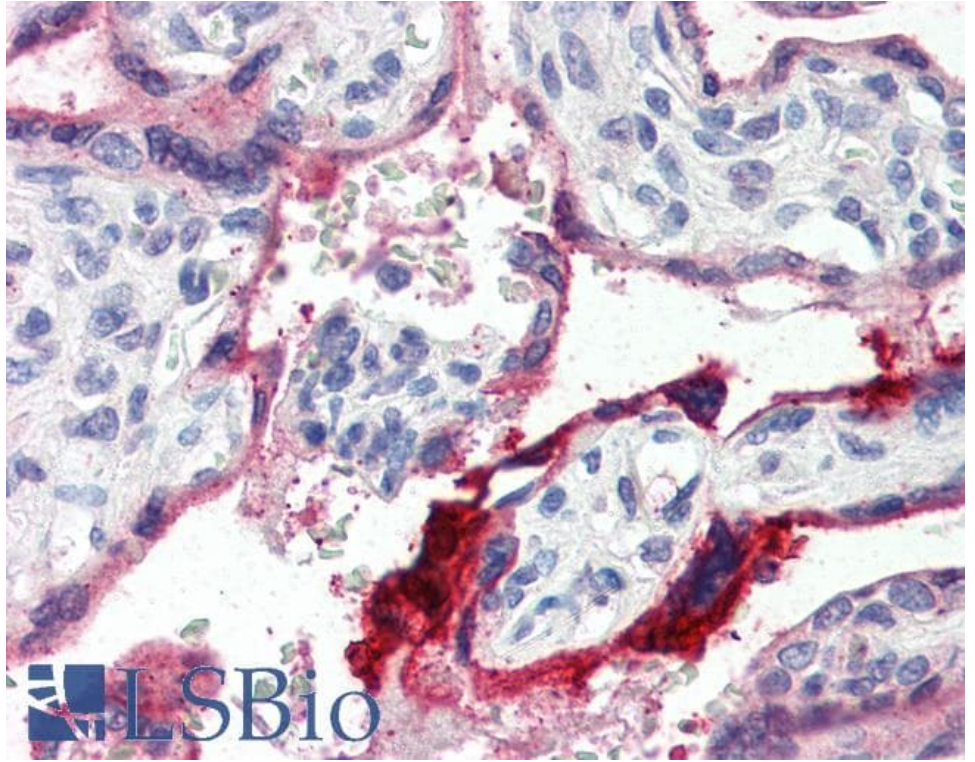
EB09185 (1 μ g/ml) staining of Rat Spleen lysate (35 μ g protein in RIPA buffer). Primary incubation was 1 hour. Detected by chemiluminescence.



EB09185 (1 μ g/ml) staining of Pig Spleen lysate (35 μ g protein in RIPA buffer). Primary incubation was 1 hour. Detected by chemiluminescence.



EB09185 (4 μ g/ml) staining of paraffin embedded Human Prostate. Steamed antigen retrieval with citrate buffer pH 6, AP-staining. **This data is from a previous batch, not on sale.**



EB09185 (4µg/ml) staining of paraffin embedded Human Placenta. Steamed antigen retrieval with citrate buffer pH 6, AP-staining. **This data is from a previous batch, not on sale.**