

## UK Office

### Everest Biotech Ltd

Cherwell Innovation Centre  
77 Heyford Park  
Upper Heyford  
Oxfordshire  
OX25 5HD  
UK

Enquiries:

[info@everestbiotech.com](mailto:info@everestbiotech.com)

Sales:

[sales@everestbiotech.com](mailto:sales@everestbiotech.com)

Tech support:

[support@everestbiotech.com](mailto:support@everestbiotech.com)

Tel: +44 (0)1869 238326

[www.everestbiotech.com](http://www.everestbiotech.com)

**Research Use Only. Not for  
diagnostic or therapeutic use.**

## EB07754 - Goat Anti-APBA1 / MINT1 Antibody

Size: 100µg specific antibody in 200µl



### Target Protein

**Principal Names:** APBA1, MINT1, amyloid beta (A4) precursor protein-binding, family A, member 1 (X11), D9S411E, mint, X11, X11A, X11ALPHA, adaptor protein X11alpha amyloid beta A4 precursor protein-binding, family A, member 1, neuron-specific X11 protein, neuronal munc18-1-interacting protein 1, phosphotyrosine-binding/-interacting domain (PTB)-bearing protein

**Official Symbol:** APBA1

**Accession Number(s):** NP\_001154.2

**Human GeneID(s):** [320](#)

**Non-Human GeneID(s):** 319924 (mouse), 83589 (rat)

### Immunogen

Peptide with sequence C-EASHPSQDGKRQYK, from the internal region of the protein sequence according to NP\_001154.2.

Please note the [peptide](#) is available for sale.

### Purification and Storage

Purified from goat serum by ammonium sulphate precipitation followed by antigen affinity chromatography using the immunizing peptide.

Supplied at 0.5 mg/ml in Tris saline, 0.02% sodium azide, pH7.3 with 0.5% bovine serum albumin.

Aliquot and store at -20°C. Minimize freezing and thawing.

### Applications Tested

**Peptide ELISA:** antibody detection limit dilution 1:16000.

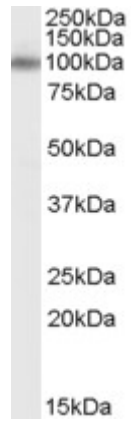
**Western blot:** Approx 100kDa band observed in Human Brain (Cerebellum and Hippocampus) lysates (calculated MW of 92.9kDa according to NP\_001154.2).

Recommended concentration: 0.1-0.3µg/ml.

### Species Reactivity

**Tested:** Human

**Expected from sequence similarity:** Human, Mouse, Rat



EB07754 (0.1µg/ml) staining of Human Brain (Cerebellum) lysate (35µg protein in RIPA buffer). Primary incubation was 1 hour. Detected by chemiluminescence.