



Everest Biotech Ltd  
Cherwell Innovation Centre  
77 Heyford Park  
Upper Heyford  
Oxfordshire  
OX25 5HD, United Kingdom

[everestbiotech.com](http://everestbiotech.com)

[sales@everestbiotech.com](mailto:sales@everestbiotech.com)

[support@everestbiotech.com](mailto:support@everestbiotech.com)

Tel +44 1869 238326

Fax +44 1869 238327

**Research Use Only. Not for  
diagnostic or therapeutic use.**

Storage: For long-term storage  
keep aliquots at -20°C. (Store no  
longer than 12 months at 4°C).  
Minimize freezing and thawing.

## EB05345 - Goat Anti-APE1 / APEX1 Antibody

Size: 100µg specific antibody in 200µl



### Target Protein

**Principal Names:** redox factor 1, apurinic/aprimidinic (abasic) endonuclease, deoxyribonuclease (apurinic or apyrimidinic), APEX nuclease 1 endonuclease, apurinic/apyrimidinic (abasic), DNA-(apurinic or apyrimidinic site) lyase, multifunctional DNA repair enzyme, apurinic/apyrimidinic exonuclease, AP endonuclease class I, AP lyase, REF-1, REF1, HAP1, APEN, APX, APE, APEX nuclease (multifunctional DNA repair enzyme), APEX, APEX1, APE1

**Official Symbol:** APEX1

**Accession Number(s):** NP\_001632.2

**Human GeneID(s):** [328](#)

**Important Comments:** Reported variants represent identical protein (NP\_001632.2; NP\_542379.1; NP\_542380.1).

### Immunogen

Peptide with sequence PKRGKKGAVAEDGD-C, from the N Terminus of the protein sequence according to NP\_001632.2.

Please note the [peptide](#) is available for sale.

### Purification and Storage

Purified from goat serum by ammonium sulphate precipitation followed by antigen affinity chromatography using the immunizing peptide.

Supplied at 0.5 mg/ml in Tris saline, 0.02% sodium azide, pH7.3 with 0.5% bovine serum albumin.

Aliquot and store at -20°C. Minimize freezing and thawing.

### Applications Tested

**Peptide ELISA:** antibody detection limit dilution 1:32000.

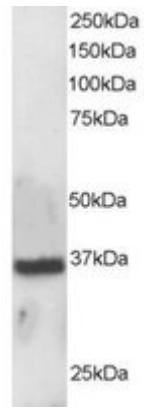
**Western blot:** Approx 35kDa band observed in Human epidermoid fibroblast A431 and Human cervix epitheloid fibroblast HeLa lysates (calculated MW of 35.6kDa according to NP\_001632.2; NP\_542379.1; NP\_542380.1. Recommended concentration: 0.5-2µg/ml.

**IHC:** This product showed nuclear staining of duct epithelial cells in Human Breast (please contact technical support for details).

### Species Reactivity

**Tested:** Human

**Expected from sequence similarity:** Human, Dog, Pig, Cow



EB05345 staining (0.5 $\mu$ g/ml) of A431 lysate (RIPA buffer, 30 $\mu$ g total protein per lane). Primary incubated for 1 hour. Detected by western blot using chemiluminescence.