



UK Office

Everest Biotech Ltd

Cherwell Innovation Centre
77 Heyford Park
Upper Heyford
Oxfordshire
OX25 5HD
UK

Enquiries:

info@everestbiotech.com

Sales:

sales@everestbiotech.com

Tech support:

support@everestbiotech.com

Tel: +44 (0)1869 238326

www.everestbiotech.com

**Research Use Only. Not for
diagnostic or therapeutic use.**

EB10903 - Goat Anti-APOBEC3D (aa61-74) Antibody

Size: 100µg specific antibody in 200µl



Target Protein

Principal Names: APOBEC3D, apolipoprotein B mRNA editing enzyme, catalytic polypeptide-like 3D, APOBEC3DE, APOBEC3E, ARP6, DNA dC->dU-editing enzyme APOBEC-3D, apolipoprotein B mRNA editing enzyme, catalytic polypeptide-like 3E pseudogene, probable DNA dC->dU-editing enzyme APOBEC-3D

Official Symbol: APOBEC3D

Accession Number(s): NP_689639.2

Human GeneID(s): [140564](#)

Immunogen

Peptide with sequence C-PKRQSNHRQEYFR, from the internal region of the protein sequence according to NP_689639.2.

Please note the [peptide](#) is available for sale.

Purification and Storage

Purified from goat serum by ammonium sulphate precipitation followed by antigen affinity chromatography using the immunizing peptide.

Supplied at 0.5 mg/ml in Tris saline, 0.02% sodium azide, pH7.3 with 0.5% bovine serum albumin.

Aliquot and store at -20°C. Minimize freezing and thawing.

Applications Tested

Peptide ELISA: antibody detection limit dilution 1:32000.

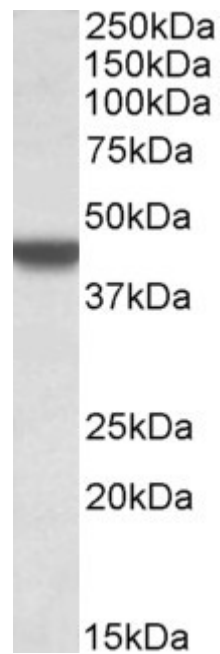
Western blot: Approx 45kDa band observed in lysates of cell line A549 (calculated MW of 46.6kDa according to NP_689639.2). Recommended concentration: 0.3-1µg/ml. Primary incubation was 1 hour.

IHC: Paraffin embedded Human Spleen. Recommended concentration: 3.75µg/ml.

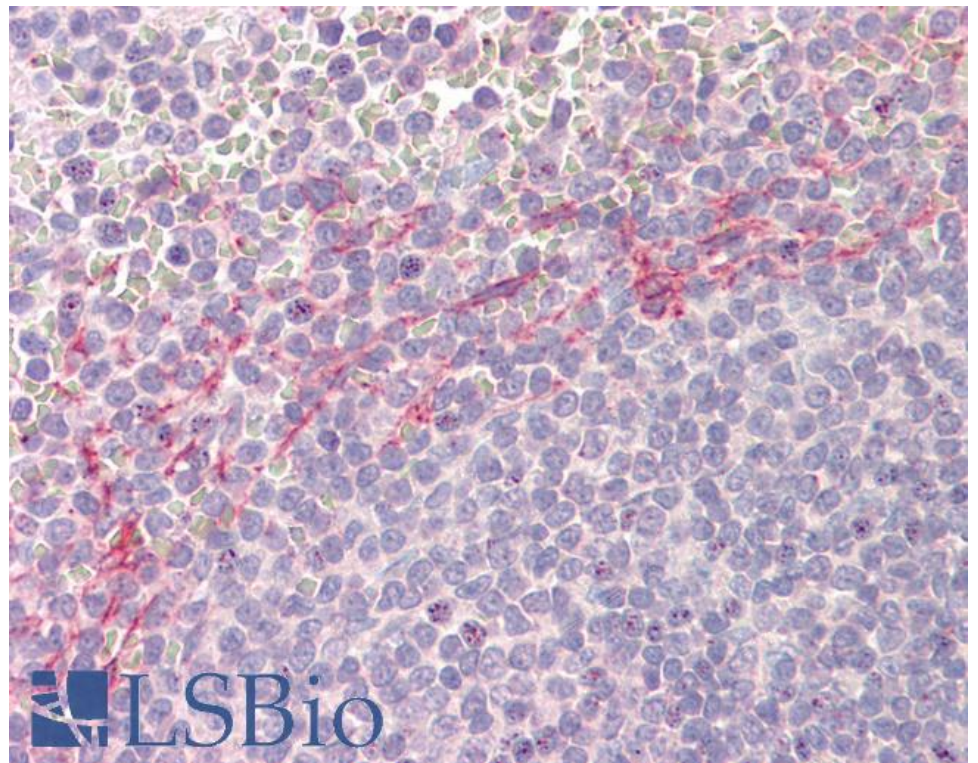
Species Reactivity

Tested: Human

Expected from sequence similarity: Human



EB10903 (0.3 μ g/ml) staining of A549 lysate (35 μ g protein in RIPA buffer). Detected by chemiluminescence.



EB10903 (3.75 μ g/ml) staining of paraffin embedded Human Spleen. Steamed antigen retrieval with citrate buffer pH 6, AP-staining.