



Everest Biotech Ltd
Cherwell Innovation Centre
77 Heyford Park
Upper Heyford
Oxfordshire
OX25 5HD, United Kingdom

everestbiotech.com

sales@everestbiotech.com

support@everestbiotech.com

Tel +44 1869 238326

Fax +44 1869 238327

Research Use Only. Not for diagnostic or therapeutic use.

Storage: For long-term storage keep aliquots at -20°C. (Store no longer than 12 months at 4°C). Minimize freezing and thawing.

EB06690 - Goat Anti-APOE Antibody

Size: 100µg specific antibody in 200µl



Target Protein

Principal Names: LPG, Alzheimer disease 2 (APOE*E4-associated, late onset), apolipoprotein E3, apolipoprotein E, apoprotein, MGC1571, AD2, APOE

Official Symbol: APOE

Accession Number(s): NP_000032.1

Human GeneID(s): [348](#)

Immunogen

Peptide with sequence C-VG TSAAPVPSDNH, from the C Terminus of the protein sequence according to NP_000032.1.

Please note the [peptide](#) is available for sale.

Purification and Storage

Purified from goat serum by ammonium sulphate precipitation followed by antigen affinity chromatography using the immunizing peptide.

Supplied at 0.5 mg/ml in Tris saline, 0.02% sodium azide, pH7.3 with 0.5% bovine serum albumin.

Aliquot and store at -20°C. Minimize freezing and thawing.

Applications Tested

Peptide ELISA: antibody detection limit dilution 1:32000.

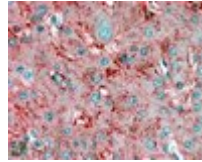
Western blot: Approx. 36kDa band observed in Human Brain lysates (calculated MW of 36.2kDa according to NP_000032.1). Recommended concentration: 0.1-0.3µg/ml.

IHC: In paraffin embedded Human Liver shows extra-cellular staining between hepatocytes. Recommended concentration, 2-4µg/ml.

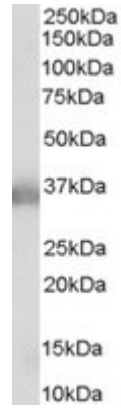
Species Reactivity

Tested: Human

Expected from sequence similarity: Human



EB06690 (2.5µg/ml) staining of paraffin embedded Human Liver. Steamed antigen retrieval with citrate buffer pH 6, AP-staining.



EB06690 (0.1µg/ml) staining of Human Brain lysate (35µg protein in RIPA buffer). Primary incubation was 1 hour. Detected by chemiluminescence.