



## UK Office

### Everest Biotech Ltd

Cherwell Innovation Centre  
77 Heyford Park  
Upper Heyford  
Oxfordshire  
OX25 5HD  
UK

Enquiries:

[info@everestbiotech.com](mailto:info@everestbiotech.com)

Sales:

[sales@everestbiotech.com](mailto:sales@everestbiotech.com)

Tech support:

[support@everestbiotech.com](mailto:support@everestbiotech.com)

Tel: +44 (0)1869 238326

[www.everestbiotech.com](http://www.everestbiotech.com)

**Research Use Only. Not for  
diagnostic or therapeutic use.**

## EB08915 - Goat Anti-APOL1 Antibody

Size: 100µg specific antibody in 200µl



### Target Protein

**Principal Names:** APOL1, apolipoprotein L, 1, APO-L, APOL, APOL-I, OTTHUMP00000028705, apolipoprotein L-I, apolipoprotein L1

**Official Symbol:** APOL1

**Accession Number(s):** NP\_003652.2; NP\_663318.1

**Human GeneID(s):** [8542](#)

**Important Comments:** This antibody is expected to recognize both reported isoforms (NP\_003652.2; NP\_663318.1).

### Immunogen

Peptide with sequence C-NNNYKILQADQE, from the C Terminus of the protein sequence according to NP\_003652.2; NP\_663318.1.

Please note the [peptide](#) is available for sale.

### Purification and Storage

Purified from goat serum by ammonium sulphate precipitation followed by antigen affinity chromatography using the immunizing peptide.

Supplied at 0.5 mg/ml in Tris saline, 0.02% sodium azide, pH7.3 with 0.5% bovine serum albumin.

Aliquot and store at -20°C. Minimize freezing and thawing.

### Applications Tested

**Peptide ELISA:** antibody detection limit dilution 1:16000.

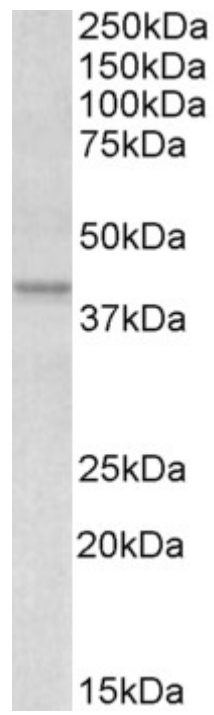
**Western blot:** Approx 45kDa band observed in Human Placenta lysates (calculated MW of 44kDa according to NP\_003652.2 and of 45.9kDa according to NP\_663318.1 ).

Recommended concentration: 0.1-0.3µg/ml. Primary incubation was 1 hour.

### Species Reactivity

**Tested:** Human

**Expected from sequence similarity:** Human



EB08915 (0.1 $\mu$ g/ml) staining of Human Placenta lysate (35 $\mu$ g protein in RIPA buffer). Detected by chemiluminescence.