



UK Office

Everest Biotech Ltd

Cherwell Innovation Centre
77 Heyford Park
Upper Heyford
Oxfordshire
OX25 5HD
UK

Enquiries:

info@everestbiotech.com

Sales:

sales@everestbiotech.com

Tech support:

support@everestbiotech.com

Tel: +44 (0)1869 238326

Fax: +44 (0)1869 238327

US Office

Everest Biotech c/o Abcore

405 Maple Street, Suite A106
Ramona,
CA 92065
USA

Inquiries:

info@everestbiotech.com

Sales:

usasales@everestbiotech.com

Tech support:

support@everestbiotech.com

Tel: 888-320-4628 (toll-free)

Fax: 888-841-9041

www.everestbiotech.com

**Research Use Only. Not for
diagnostic or therapeutic use.**

EB08915 - Goat Anti-APOL1 Antibody

Size: 100µg specific antibody in 200µl



Target Protein

Principal Names: APOL1, apolipoprotein L, 1, APO-L, APOL, APOL-I, OTTHUMP00000028705, apolipoprotein L-I, apolipoprotein L1

Official Symbol: APOL1

Accession Number(s): NP_003652.2; NP_663318.1

Human GeneID(s): [8542](#)

Important Comments: This antibody is expected to recognize both reported isoforms (NP_003652.2; NP_663318.1).

Immunogen

Peptide with sequence C-NNNYKILQADQE, from the C Terminus of the protein sequence according to NP_003652.2; NP_663318.1.

Please note the [peptide](#) is available for sale.

Purification and Storage

Purified from goat serum by ammonium sulphate precipitation followed by antigen affinity chromatography using the immunizing peptide.

Supplied at 0.5 mg/ml in Tris saline, 0.02% sodium azide, pH7.3 with 0.5% bovine serum albumin.

Aliquot and store at -20°C. Minimize freezing and thawing.

Applications Tested

Peptide ELISA: antibody detection limit dilution 1:16000.

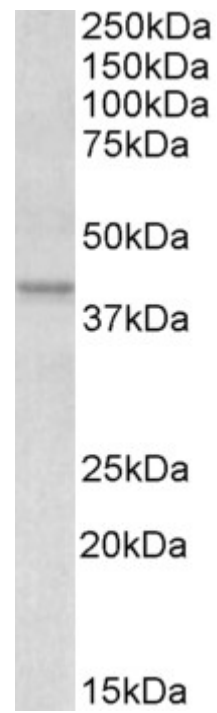
Western blot: Approx 45kDa band observed in Human Placenta lysates (calculated MW of 44kDa according to NP_003652.2 and of 45.9kDa according to NP_663318.1).

Recommended concentration: 0.1-0.3µg/ml. Primary incubation was 1 hour.

Species Reactivity

Tested: Human

Expected from sequence similarity: Human



EB08915 (0.1 μ g/ml) staining of Human Placenta lysate (35 μ g protein in RIPA buffer). Detected by chemiluminescence.