



UK Office

Everest Biotech Ltd

Cherwell Innovation Centre
77 Heyford Park
Upper Heyford
Oxfordshire
OX25 5HD
UK

Enquiries:

info@everestbiotech.com

Sales:

sales@everestbiotech.com

Tech support:

support@everestbiotech.com

Tel: +44 (0)1869 238326

Fax: +44 (0)1869 238327

US Office

Everest Biotech c/o Abcore

405 Maple Street, Suite A106
Ramona,
CA 92065
USA

Inquiries:

info@everestbiotech.com

Sales:

usasales@everestbiotech.com

Tech support:

support@everestbiotech.com

Tel: 888-320-4628 (toll-free)

Fax: 888-841-9041

www.everestbiotech.com

**Research Use Only. Not for
diagnostic or therapeutic use.**

EB08772 - Goat Anti-APOLD1 / VERGE Antibody

Size: 100µg specific antibody in 200µl



Target Protein

Principal Names: APOLD1, apolipoprotein L domain containing 1, DKFZP434F0318, FLJ25138, VERGE

Official Symbol: APOLD1

Accession Number(s): NP_110444.3; NP_001123887.1

Human GeneID(s): [81575](#)

Immunogen

Peptide with sequence C-KSSRGHDLKISADQ, from the C Terminus of the protein sequence according to NP_110444.3; NP_001123887.1.

Please note the [peptide](#) is available for sale.

Purification and Storage

Purified from goat serum by ammonium sulphate precipitation followed by antigen affinity chromatography using the immunizing peptide.

Supplied at 0.5 mg/ml in Tris saline, 0.02% sodium azide, pH7.3 with 0.5% bovine serum albumin.

Aliquot and store at -20°C. Minimize freezing and thawing.

Applications Tested

Peptide ELISA: antibody detection limit dilution 1:2000.

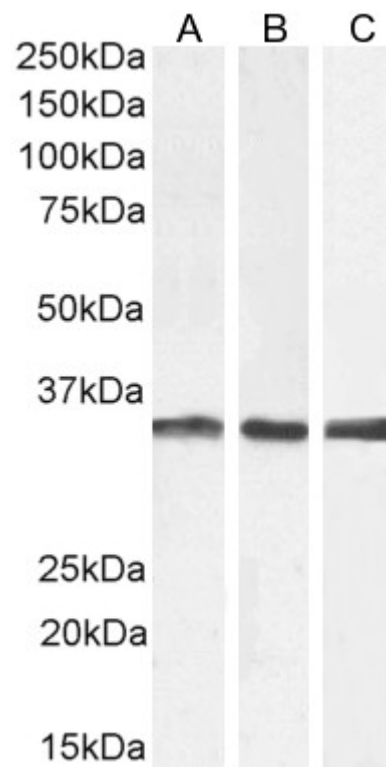
Western blot: Approx. 35kDa band observed in lysates of cell lines A431, Jurkat and U251 (calculated MW of 30.5kDa according to Human NP_001123887.1). This molecular weight is routinely observed by other sources. Recommended concentration: 0.5-2µg/ml. Primary incubation 1 hour at room temperature.

Flow Cytometry: Flow cytometric analysis of A431 cells. Recommended concentration: 10µg/ml.

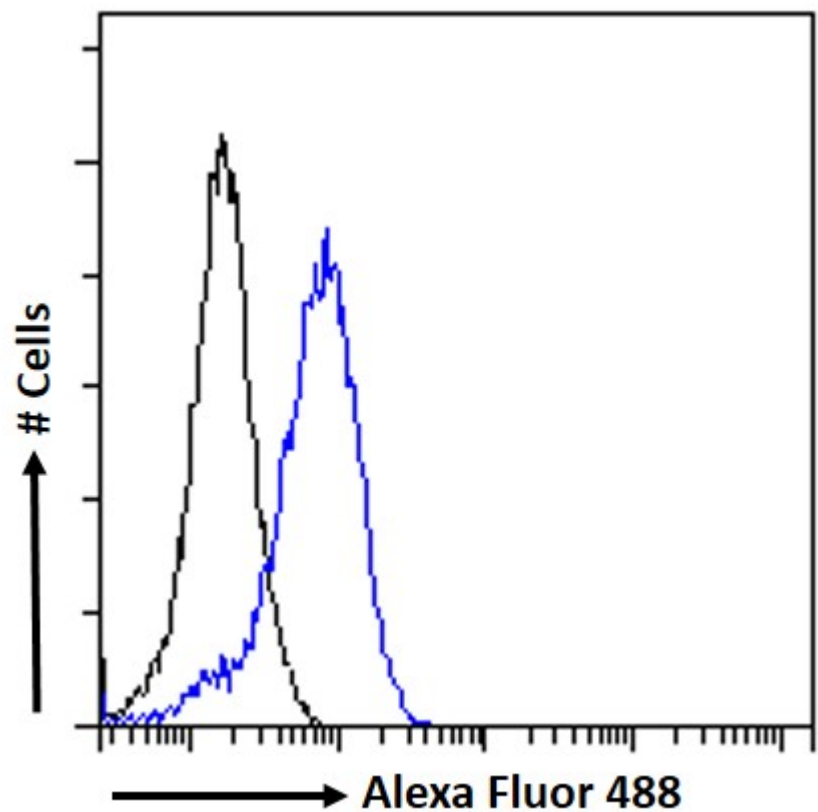
Species Reactivity

Tested: Human

Expected from sequence similarity: Human



EB09741 (2 μ g/ml) staining of A431 (A), Jurkat (B), and U251 (C) cell lysate (35 μ g protein in RIPA buffer).
Detected by chemiluminescence.



EB08772 Flow cytometric analysis of paraformaldehyde fixed A431 cells (blue line), permeabilized with 0.5% Triton. Primary incubation 1hr (10 μ g/ml) followed by Alexa Fluor 488 secondary antibody (1 μ g/ml). IgG control: Unimmunized goat IgG (black line) followed by Alexa Fluor 488 secondary antibody.