

UK Office

Everest Biotech Ltd

Cherwell Innovation Centre
77 Heyford Park
Upper Heyford
Oxfordshire
OX25 5HD
UK

Enquiries:

info@everestbiotech.com

Sales:

sales@everestbiotech.com

Tech support:

support@everestbiotech.com

Tel: +44 (0)1869 238326

www.everestbiotech.com

**Research Use Only. Not for
diagnostic or therapeutic use.**

EB08762 - Goat Anti-APOH Antibody

Size: 100µg specific antibody in 200µl



Target Protein

Principal Names: APOH, apolipoprotein H (beta-2-glycoprotein I), B2G1, BG, apolipoprotein H, beta-2-glycoprotein I

Official Symbol: APOH

Accession Number(s): NP_000033.2

Human GeneID(s): [350](#)

Immunogen

Peptide with sequence C-QGERVKIQEKFKN, from the internal region of the protein sequence according to NP_000033.2.

Please note the [peptide](#) is available for sale.

Purification and Storage

Purified from goat serum by ammonium sulphate precipitation followed by antigen affinity chromatography using the immunizing peptide.

Supplied at 0.5 mg/ml in Tris saline, 0.02% sodium azide, pH7.3 with 0.5% bovine serum albumin.

Aliquot and store at -20°C. Minimize freezing and thawing.

Applications Tested

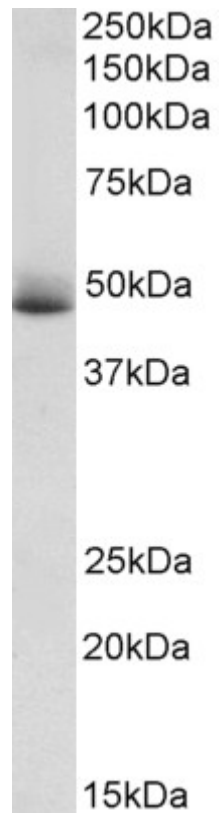
Peptide ELISA: antibody detection limit dilution 1:128000.

Western blot: Approx 48kDa band observed in Human Albumin-depleted Plasma lysates (calculated MW of 38.3kDa according to NP_000033.2). The observed molecular weight corresponds to earlier findings in literature with different antibodies (Gambino, J Lipid Res. 1996 Apr;37(4):902-4. PMID: 8732790). Recommended concentration: 1-3µg/ml.

Species Reactivity

Tested: Human

Expected from sequence similarity: Human, Dog



EB08762 (1 μ g/ml) staining of Human Albumin-depleted Plasma lysate (35 μ g protein in RIPA buffer). Primary incubation was 1 hour. Detected by chemiluminescence.