



Everest Biotech Ltd
Cherwell Innovation Centre
77 Heyford Park
Upper Heyford
Oxfordshire
OX25 5HD, United Kingdom

everestbiotech.com

sales@everestbiotech.com

support@everestbiotech.com

Tel +44 1869 238326

Fax +44 1869 238327

Research Use Only. Not for diagnostic or therapeutic use.

Storage: For long-term storage keep aliquots at -20°C. (Store no longer than 12 months at 4°C). Minimize freezing and thawing.

EB08775 - Goat Anti-Apolipoprotein M (mouse) Antibody

Size: 100µg specific antibody in 200µl



Target Protein

Principal Names: 1190010O19Rik, NG20, G3a, apolipoprotein M, Apom

Official Symbol: Apom

Accession Number(s): NP_061286.1

Non-Human GeneID(s): 55938 (mouse), 55939 (rat)

Immunogen

Peptide with sequence C-KGNMELRTEGRPD, from the internal region of the protein sequence according to NP_061286.1.

Please note the [peptide](#) is available for sale.

Purification and Storage

Purified from goat serum by ammonium sulphate precipitation followed by antigen affinity chromatography using the immunizing peptide.

Supplied at 0.5 mg/ml in Tris saline, 0.02% sodium azide, pH7.3 with 0.5% bovine serum albumin.

Aliquot and store at -20°C. Minimize freezing and thawing.

Applications Tested

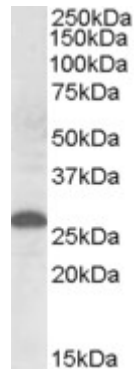
Peptide ELISA: antibody detection limit dilution 1:16000.

Western blot: Approx. 26kDa band observed in Human Placenta lysates (calculated MW of 21.3kDa according to NP_061286.1). The observed molecular weight corresponds to earlier findings in literature with different antibodies (Xu and Dahlbäck, J Biol Chem. 1999 Oct 29;274(44):31286-90.; PMID: 10531326). Recommended concentration: 0.3-1µg/ml.

Species Reactivity

Tested: Human

Expected from sequence similarity: Mouse, Rat



EB08775 (0.5 μ g/ml) staining of Human Placenta lysate (35 μ g protein in RIPA buffer). Primary incubation was 1 hour. Detected by chemiluminescence.