



## UK Office

### Everest Biotech Ltd

Cherwell Innovation Centre  
77 Heyford Park  
Upper Heyford  
Oxfordshire  
OX25 5HD  
UK

Enquiries:

[info@everestbiotech.com](mailto:info@everestbiotech.com)

Sales:

[sales@everestbiotech.com](mailto:sales@everestbiotech.com)

Tech support:

[support@everestbiotech.com](mailto:support@everestbiotech.com)

Tel: +44 (0)1869 238326

Fax: +44 (0)1869 238327

## US Office

### Everest Biotech c/o Abcore

405 Maple Street, Suite A106  
Ramona,  
CA 92065  
USA

Inquiries:

[info@everestbiotech.com](mailto:info@everestbiotech.com)

Sales:

[usasales@everestbiotech.com](mailto:usasales@everestbiotech.com)

Tech support:

[support@everestbiotech.com](mailto:support@everestbiotech.com)

Tel: 888-320-4628 (toll-free)

Fax: 888-841-9041

[www.everestbiotech.com](http://www.everestbiotech.com)

**Research Use Only. Not for  
diagnostic or therapeutic use.**

## EB07590 - Goat Anti-APPL1 Antibody

Size: 100µg specific antibody in 200µl



### Target Protein

**Principal Names:** APPL1, DIP13alpha, adaptor protein containing pH domain, PTB domain and leucine zipper motif, signaling adaptor protein DIP13alpha

**Official Symbol:** APPL1

**Accession Number(s):** NP\_036228.1

**Human GeneID(s):** [26060](#)

**Non-Human GeneID(s):** 72993 (mouse)

### Immunogen

Peptide with sequence C-NRYSRLSKKRENDK, from the internal region of the protein sequence according to NP\_036228.1.

Please note the [peptide](#) is available for sale.

### Purification and Storage

Purified from goat serum by ammonium sulphate precipitation followed by antigen affinity chromatography using the immunizing peptide.

Supplied at 0.5 mg/ml in Tris saline, 0.02% sodium azide, pH7.3 with 0.5% bovine serum albumin.

Aliquot and store at -20°C. Minimize freezing and thawing.

### Applications Tested

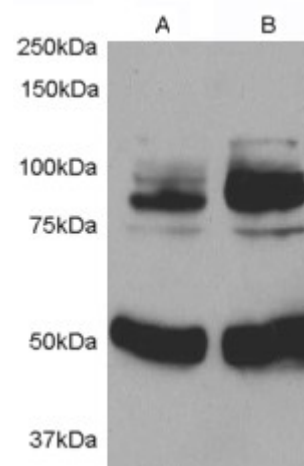
**Peptide ELISA:** antibody detection limit dilution 1:64000.

**Western blot:** Approx 80kDa band observed in Rat Aortic Smooth Skeletal Muscle Cells (lane 1), intensity increased after infection with Human APPL1 adenovirus for 48h (lane 2). Calculated MW of 79.7kDa according to NP\_036228.1. The blot was co-labeled with Tubulin-specific antibodies as a loading control. Recommended concentration: 0.3-1µg/ml.

### Species Reactivity

**Tested:**

**Expected from sequence similarity:** Human, Mouse, Rat, Dog, Cow



EB07590 (0.5 $\mu$ g/ml) staining of 1) Rat Aortic Smooth Muscle cell lysate 2) after infection with Human APPL1 adenovirus for 48hrs. Detected by chemiluminescence. Data kindly provided by Dr. L. Jia, Ann Arbor, USA.