



## UK Office

### Everest Biotech Ltd

Cherwell Innovation Centre  
77 Heyford Park  
Upper Heyford  
Oxfordshire  
OX25 5HD  
UK

Enquiries:

[info@everestbiotech.com](mailto:info@everestbiotech.com)

Sales:

[sales@everestbiotech.com](mailto:sales@everestbiotech.com)

Tech support:

[support@everestbiotech.com](mailto:support@everestbiotech.com)

Tel: +44 (0)1869 238326

Fax: +44 (0)1869 238327

## US Office

### Everest Biotech c/o Abcore

405 Maple Street, Suite A106  
Ramona,  
CA 92065  
USA

Inquiries:

[info@everestbiotech.com](mailto:info@everestbiotech.com)

Sales:

[usasales@everestbiotech.com](mailto:usasales@everestbiotech.com)

Tech support:

[support@everestbiotech.com](mailto:support@everestbiotech.com)

Tel: 888-320-4628 (toll-free)

Fax: 888-841-9041

[www.everestbiotech.com](http://www.everestbiotech.com)

**Research Use Only. Not for  
diagnostic or therapeutic use.**

## EB06188 - Goat Anti-APXL Antibody

Size: 100µg specific antibody in 200µl



### Target Protein

**Principal Names:** SHROOM2, APXL, HSAPXL, apical protein-like (Xenopus laevis), APX homolog of Xenopus, shroom family member 2, DKFZp781J074, FLJ39277, apical protein of Xenopus-like, apical protein, Xenopus laevis-like

**Official Symbol:** SHROOM2

**Accession Number(s):** NP\_001640

**Human GeneID(s):** [357](#)

### Immunogen

Peptide with sequence KCLLDLQPERGK, from the C Terminus of the protein sequence according to NP\_001640.

Please note the [peptide](#) is available for sale.

### Purification and Storage

Purified from goat serum by ammonium sulphate precipitation followed by antigen affinity chromatography using the immunizing peptide.

Supplied at 0.5 mg/ml in Tris saline, 0.02% sodium azide, pH7.3 with 0.5% bovine serum albumin.

Aliquot and store at -20°C. Minimize freezing and thawing.

### Applications Tested

**Peptide ELISA:** antibody detection limit dilution 1:32000.

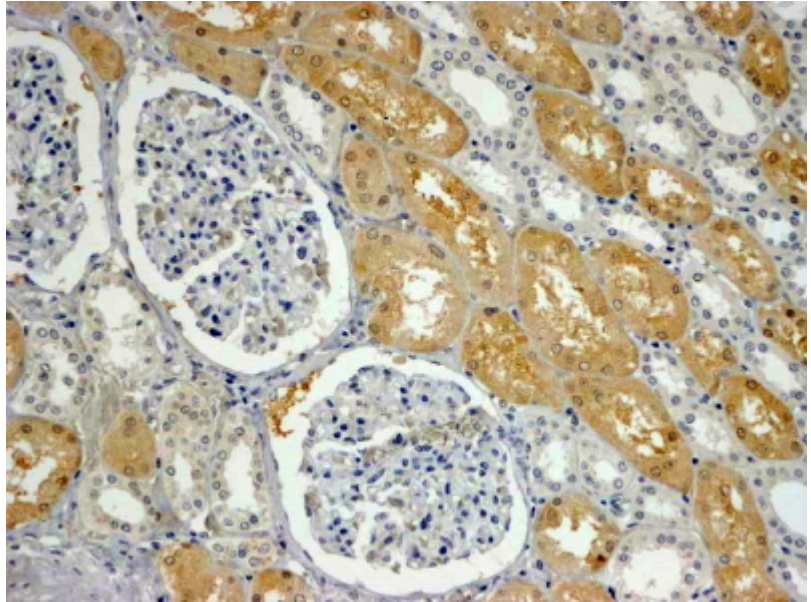
**IHC:** In paraffin embedded Human Kidney shows cytoplasm staining in PCT exclusively.

Recommended concentration, 4-6µg/ml.

### Species Reactivity

**Tested:** Human

**Expected from sequence similarity:** Human, Cow



EB06188 (4 $\mu$ g/ml) staining of paraffin embedded Human Kidney. Steamed antigen retrieval with Tris/EDTA buffer pH 9, HRP-staining.