



## UK Office

### Everest Biotech Ltd

Cherwell Innovation Centre  
77 Heyford Park  
Upper Heyford  
Oxfordshire  
OX25 5HD  
UK

Enquiries:

[info@everestbiotech.com](mailto:info@everestbiotech.com)

Sales:

[sales@everestbiotech.com](mailto:sales@everestbiotech.com)

Tech support:

[support@everestbiotech.com](mailto:support@everestbiotech.com)

Tel: +44 (0)1869 238326

Fax: +44 (0)1869 238327

## US Office

### Everest Biotech c/o Abcore

405 Maple Street, Suite A106  
Ramona,  
CA 92065  
USA

Inquiries:

[info@everestbiotech.com](mailto:info@everestbiotech.com)

Sales:

[usasales@everestbiotech.com](mailto:usasales@everestbiotech.com)

Tech support:

[support@everestbiotech.com](mailto:support@everestbiotech.com)

Tel: 888-320-4628 (toll-free)

Fax: 888-841-9041

[www.everestbiotech.com](http://www.everestbiotech.com)

**Research Use Only. Not for  
diagnostic or therapeutic use.**

## EB09166 - Goat Anti-AREB6 / ZEB1 Antibody

Size: 100µg specific antibody in 200µl



### Target Protein

**Principal Names:** ZEB1, AREB6, zinc finger E-box binding homeobox 1, BZP, DELTA-EF1, MGC133261, NIL-2-A, NIL-2A, NIL2A, TCF8, ZEB, ZFHEP, ZFHX1A, OTTHUMP00000019405, transcription factor 8 (represses interleukin 2 expression), zinc finger homeodomain enhancer-binding protein

**Official Symbol:** ZEB1

**Accession Number(s):** NP\_001121600.1; NP\_110378.3

**Human GeneID(s):** [6935](#)

**Non-Human GeneID(s):** 21417 (mouse), 25705 (rat)

**Important Comments:** This antibody is expected to recognize both reported isoforms (NP\_001121600.1; NP\_110378.3).

### Immunogen

Peptide with sequence C-RPQIRQKIENKPLQE, from the internal region of the protein sequence according to NP\_001121600.1; NP\_110378.3.

Please note the [peptide](#) is available for sale.

### Purification and Storage

Purified from goat serum by ammonium sulphate precipitation followed by antigen affinity chromatography using the immunizing peptide.

Supplied at 0.5 mg/ml in Tris saline, 0.02% sodium azide, pH7.3 with 0.5% bovine serum albumin.

Aliquot and store at -20°C. Minimize freezing and thawing.

### Applications Tested

**Peptide ELISA:** antibody detection limit dilution 1:32000.

**Western blot:** Approx. 100kDa band observed in Mouse Heart lysates (calculated MW of 122kDa according to Human NP\_110378.3 and Mouse NP\_035676.1). Recommended concentration: 0.05-0.2µg/ml. Primary incubation was 1 hour. Preliminary testing was unsuccessful on Human and Rat Heart for this particular batch.

**Immunofluorescence:** Strong expression of the protein seen in the nuclei and cytoplasm of U2OS cells. Recommended concentration: 10µg/ml.

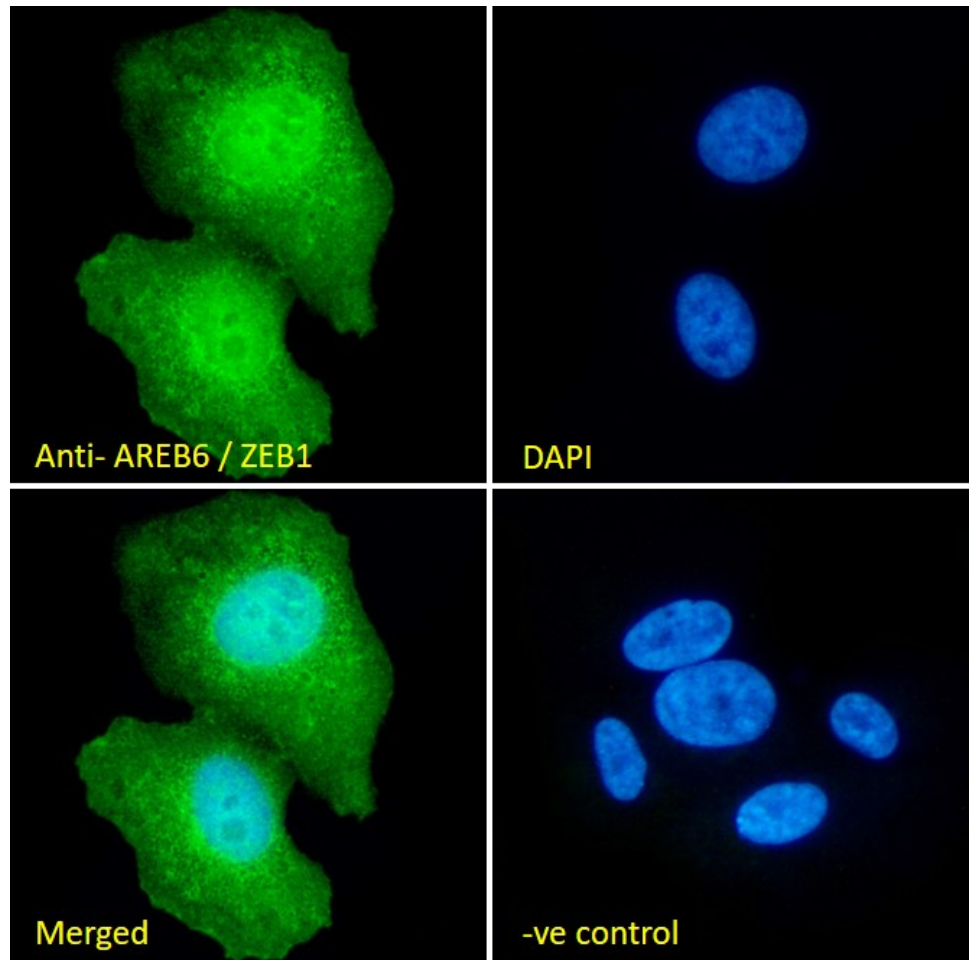
### Species Reactivity

**Tested:** Human, Mouse

**Expected from sequence similarity:** Human, Mouse, Rat



EB09166 (0.05 $\mu$ g/ml) staining of Mouse Heart lysate (35 $\mu$ g protein in RIPA buffer). Detected by chemiluminescence.



EB09166 Immunofluorescence analysis of paraformaldehyde fixed U2OS cells, permeabilized with 0.15% Triton. Primary incubation 1hr (10 $\mu$ g/ml) followed by Alexa Fluor 488 secondary antibody (2 $\mu$ g/ml), showing nuclear and cytoplasmic staining. The nuclear stain is DAPI (blue). Negative control: Unimmunized goat IgG (10 $\mu$ g/ml) followed by Alexa Fluor 488 secondary antibody (2 $\mu$ g/ml).