

## UK Office

### Everest Biotech Ltd

Cherwell Innovation Centre  
77 Heyford Park  
Upper Heyford  
Oxfordshire  
OX25 5HD  
UK

Enquiries:

[info@everestbiotech.com](mailto:info@everestbiotech.com)

Sales:

[sales@everestbiotech.com](mailto:sales@everestbiotech.com)

Tech support:

[support@everestbiotech.com](mailto:support@everestbiotech.com)

Tel: +44 (0)1869 238326

[www.everestbiotech.com](http://www.everestbiotech.com)

**Research Use Only. Not for  
diagnostic or therapeutic use.**

## EB07557 - Goat Anti-ARF1 (variants 1-4) Antibody

Size: 100µg specific antibody in 200µl



### Target Protein

**Principal Names:** ARF1, ADP-ribosylation factor 1, ARF 1, ADP ribosylation factor 1

**Official Symbol:** ARF1

**Accession Number(s):** NP\_001019397.1; NP\_001649.1; NP\_001019398.1;  
NP\_001019399.1

**Human GeneID(s):** [375](#) , [376](#)

**Non-Human GeneID(s):** 11840 (mouse), 64310 (rat)

**Important Comments:** This antibody is expected to recognize all four reported isoforms.

### Immunogen

Peptide with sequence C-EGLDWLSNQLRNQK, from the C Terminus of the protein sequence according to NP\_001019397.1; NP\_001649.1; NP\_001019398.1; NP\_001019399.1.

Please note the [peptide](#) is available for sale.

### Purification and Storage

Purified from goat serum by ammonium sulphate precipitation followed by antigen affinity chromatography using the immunizing peptide.

Supplied at 0.5 mg/ml in Tris saline, 0.02% sodium azide, pH7.3 with 0.5% bovine serum albumin.

Aliquot and store at -20°C. Minimize freezing and thawing.

### Applications Tested

**Peptide ELISA:** antibody detection limit dilution 1:8000.

**Western blot:** Approx 18kDa band observed in lysates of cell lines A431, HeLa, MCF7, NIH3T3, KNRK and MDCK (calculated MW of 20.7kDa according to Human NP\_001649.1, Mouse NP\_031502.1 and Rat NP\_071963.1). Recommended concentration: 0.3-1µg/ml. Primary incubation 1 hour at room temperature.

**Flow Cytometry:** Flow cytometric analysis of A431 cells. Recommended concentration: 10ug/ml.

### Species Reactivity

**Tested:** Human, Mouse, Rat, Dog

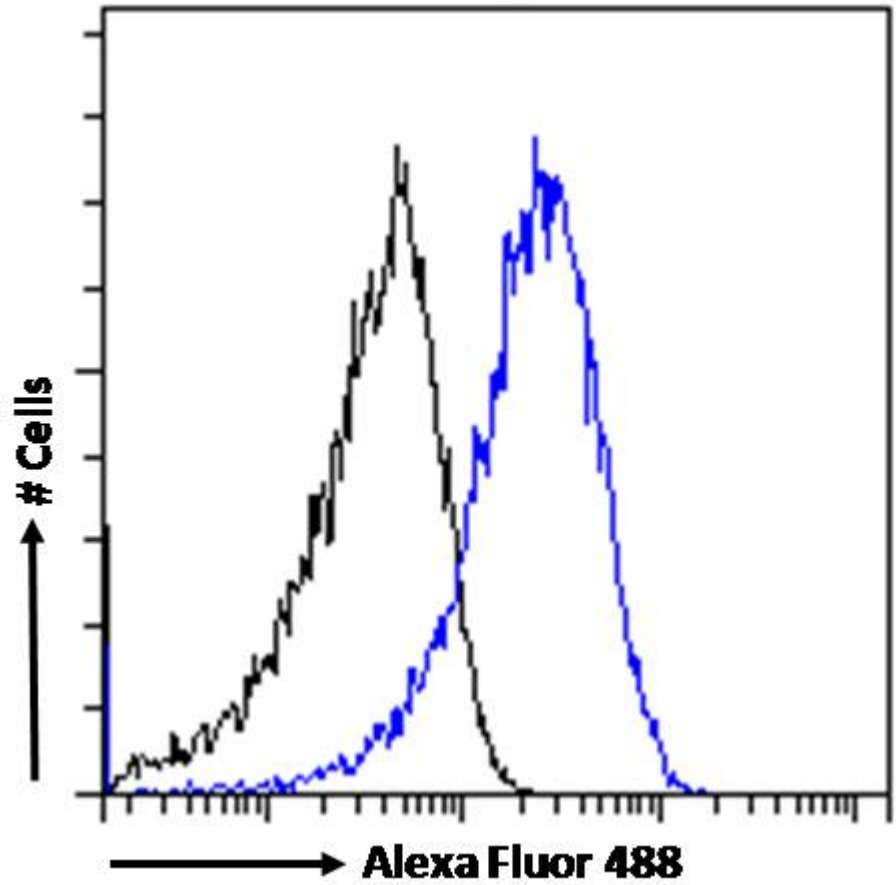
**Expected from sequence similarity:** Human, Mouse, Rat, Dog



EB07557 (1 $\mu$ g/ml) staining of A431 (A) and (0.3 $\mu$ g/ml) of HeLa (B) and MCF7 (C) cell lysate (35 $\mu$ g protein in RIPA buffer). Detected by chemiluminescence.



EB07557 (1µg/ml) staining of NIH3T3 (A), KNRK (B) and MDCK (C) cell lysate (35µg protein in RIPA buffer).  
Detected by chemiluminescence.



EB07557 Flow cytometric analysis of paraformaldehyde fixed A431 cells (blue line), permeabilized with 0.5% Triton. Primary incubation 1hr (10ug/ml) followed by Alexa Fluor 488 secondary antibody (1ug/ml). IgG control: Unimmunized goat IgG (black line) followed by Alexa Fluor 488 secondary antibody.