



UK Office

Everest Biotech Ltd

Cherwell Innovation Centre
77 Heyford Park
Upper Heyford
Oxfordshire
OX25 5HD
UK

Enquiries:

info@everestbiotech.com

Sales:

sales@everestbiotech.com

Tech support:

support@everestbiotech.com

Tel: +44 (0)1869 238326

Fax: +44 (0)1869 238327

US Office

Everest Biotech c/o Abcore

405 Maple Street, Suite A106
Ramona,
CA 92065
USA

Inquiries:

info@everestbiotech.com

Sales:

usasales@everestbiotech.com

Tech support:

support@everestbiotech.com

Tel: 888-320-4628 (toll-free)

Fax: 888-841-9041

www.everestbiotech.com

**Research Use Only. Not for
diagnostic or therapeutic use.**

EB07557 - Goat Anti-ARF1 (variants 1-4) Antibody

Size: 100µg specific antibody in 200µl



Target Protein

Principal Names: ARF1, ADP-ribosylation factor 1, ARF 1, ADP ribosylation factor 1

Official Symbol: ARF1

Accession Number(s): NP_001019397.1; NP_001649.1; NP_001019398.1;
NP_001019399.1

Human GeneID(s): [375](#) , [376](#)

Non-Human GeneID(s): 11840 (mouse), 64310 (rat)

Important Comments: This antibody is expected to recognize all four reported isoforms.

Immunogen

Peptide with sequence C-EGLDWLSNQLRNQK, from the C Terminus of the protein sequence according to NP_001019397.1; NP_001649.1; NP_001019398.1; NP_001019399.1.

Please note the [peptide](#) is available for sale.

Purification and Storage

Purified from goat serum by ammonium sulphate precipitation followed by antigen affinity chromatography using the immunizing peptide.

Supplied at 0.5 mg/ml in Tris saline, 0.02% sodium azide, pH7.3 with 0.5% bovine serum albumin.

Aliquot and store at -20°C. Minimize freezing and thawing.

Applications Tested

Peptide ELISA: antibody detection limit dilution 1:8000.

Western blot: Approx 18kDa band observed in lysates of cell lines A431, HeLa, MCF7, NIH3T3, KNRK and MDCK (calculated MW of 20.7kDa according to Human NP_001649.1, Mouse NP_031502.1 and Rat NP_071963.1). Recommended concentration: 0.3-1µg/ml. Primary incubation 1 hour at room temperature.

Flow Cytometry: Flow cytometric analysis of A431 cells. Recommended concentration: 10ug/ml.

Species Reactivity

Tested: Human, Mouse, Rat, Dog

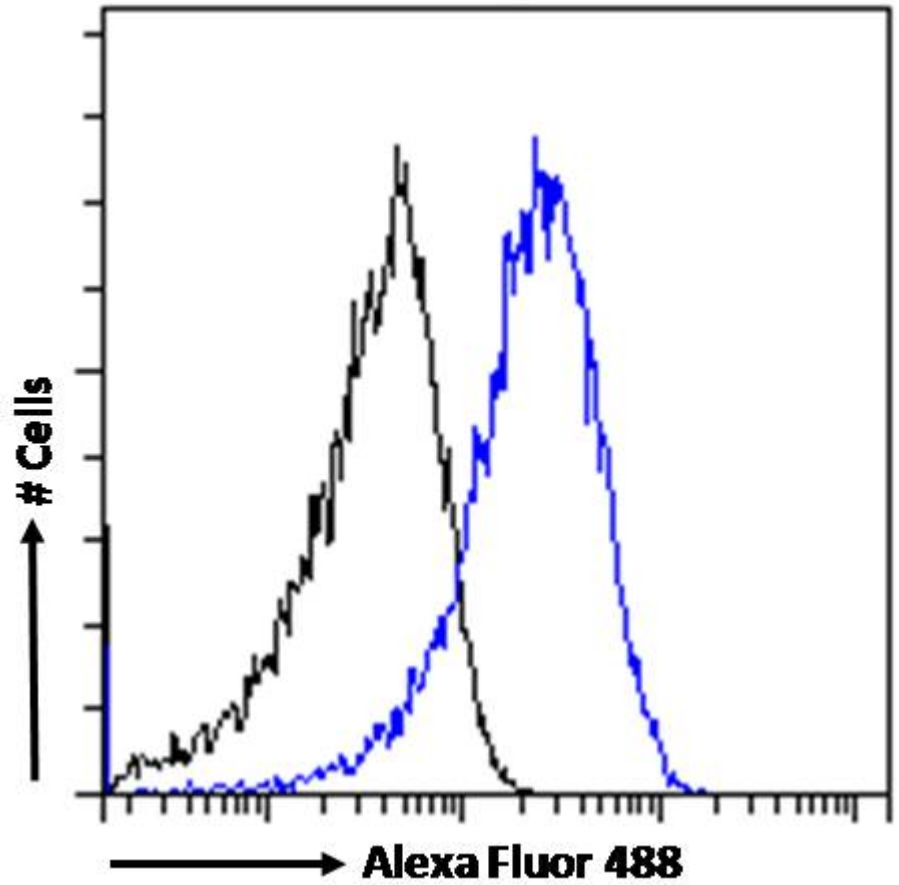
Expected from sequence similarity: Human, Mouse, Rat, Dog



EB07557 (1 μ g/ml) staining of A431 (A) and (0.3 μ g/ml) of HeLa (B) and MCF7 (C) cell lysate (35 μ g protein in RIPA buffer). Detected by chemiluminescence.



EB07557 (1 μ g/ml) staining of NIH3T3 (A), KNRK (B) and MDCK (C) cell lysate (35 μ g protein in RIPA buffer).
Detected by chemiluminescence.



EB07557 Flow cytometric analysis of paraformaldehyde fixed A431 cells (blue line), permeabilized with 0.5% Triton. Primary incubation 1hr (10 μ g/ml) followed by Alexa Fluor 488 secondary antibody (1 μ g/ml). IgG control: Unimmunized goat IgG (black line) followed by Alexa Fluor 488 secondary antibody.