



UK Office

Everest Biotech Ltd

Cherwell Innovation Centre
77 Heyford Park
Upper Heyford
Oxfordshire
OX25 5HD
UK

Enquiries:

info@everestbiotech.com

Sales:

sales@everestbiotech.com

Tech support:

support@everestbiotech.com

Tel: +44 (0)1869 238326

Fax: +44 (0)1869 238327

US Office

Everest Biotech c/o Abcore

405 Maple Street, Suite A106
Ramona,
CA 92065
USA

Inquiries:

info@everestbiotech.com

Sales:

usasales@everestbiotech.com

Tech support:

support@everestbiotech.com

Tel: 888-320-4628 (toll-free)

Fax: 888-841-9041

www.everestbiotech.com

**Research Use Only. Not for
diagnostic or therapeutic use.**

EB11622 - Goat Anti-ARF4 (aa137-150) Antibody

Size: 100µg specific antibody in 200µl



Target Protein

Principal Names: ADP-ribosylation factor 2, ADP-ribosylation factor 4, ARF2, ARF4, OTTHUMP00000213140, OTTHUMP00000213142, OTTHUMP00000213211

Official Symbol: ARF4

Accession Number(s): NP_001651.1

Human GeneID(s): [378](#)

Non-Human GeneID(s): 11843 (mouse), 79120 (rat)

Immunogen

Peptide with sequence C-SEMTDKLGLQSLRN, from the internal region of the protein sequence according to NP_001651.1.

Please note the [peptide](#) is available for sale.

Purification and Storage

Purified from goat serum by ammonium sulphate precipitation followed by antigen affinity chromatography using the immunizing peptide.

Supplied at 0.5 mg/ml in Tris saline, 0.02% sodium azide, pH7.3 with 0.5% bovine serum albumin.

Aliquot and store at -20°C. Minimize freezing and thawing.

Applications Tested

Peptide ELISA: antibody detection limit dilution 1:128000.

Western blot: Approx 19kDa band observed in lysates of cell lines NIH3T3 and HeLa (calculated MW of 20.5kDa according to Human NP_001651.1 and 20.4kDa according to Mouse NP_031505.1). Recommended concentration: 0.3-1µg/ml. Primary incubation 1 hour at room temperature.

IHC: Paraffin embedded Human Thymus. Recommended concentration: 5µg/ml.

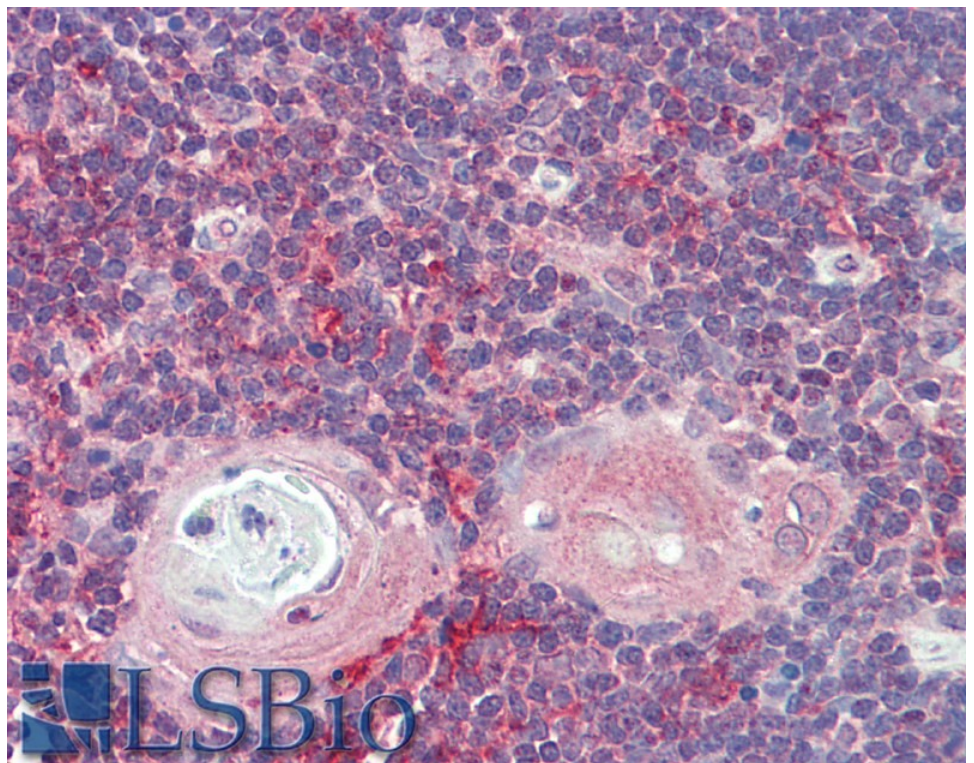
Species Reactivity

Tested: Human, Mouse

Expected from sequence similarity: Human, Mouse, Rat, Pig, Cow



EB11622 (0.5 μ g/ml) staining of NIH3T3 (A) and HeLa (B) lysates (35 μ g protein in RIPA buffer). Detected by chemiluminescence.



EB11622 (5 μ g/ml) staining of paraffin embedded Human Thymus. Steamed antigen retrieval with citrate buffer pH 6, AP-staining.