



## UK Office

### Everest Biotech Ltd

Cherwell Innovation Centre  
77 Heyford Park  
Upper Heyford  
Oxfordshire  
OX25 5HD  
UK

Enquiries:

[info@everestbiotech.com](mailto:info@everestbiotech.com)

Sales:

[sales@everestbiotech.com](mailto:sales@everestbiotech.com)

Tech support:

[support@everestbiotech.com](mailto:support@everestbiotech.com)

Tel: +44 (0)1869 238326

Fax: +44 (0)1869 238327

## US Office

### Everest Biotech c/o Abcore

405 Maple Street, Suite A106  
Ramona,  
CA 92065  
USA

Inquiries:

[info@everestbiotech.com](mailto:info@everestbiotech.com)

Sales:

[usasales@everestbiotech.com](mailto:usasales@everestbiotech.com)

Tech support:

[support@everestbiotech.com](mailto:support@everestbiotech.com)

Tel: 888-320-4628 (toll-free)

Fax: 888-841-9041

[www.everestbiotech.com](http://www.everestbiotech.com)

**Research Use Only. Not for  
diagnostic or therapeutic use.**

## EB06795 - Goat Anti-Arginase I Antibody

Size: 100µg specific antibody in 200µl



### Target Protein

**Principal Names:** ARG1, arginase, liver, HGNC:663, A-I, arginase, type I, arginase 1, liver-type arginase, type I arginase

**Official Symbol:** ARG1

**Accession Number(s):** NP\_000036.2; NP\_001231367.1; NP\_001355949.1

**Human GeneID(s):** [383](#)

**Non-Human GeneID(s):** 11846 (mouse), 29221 (rat)

**Important Comments:** Please note that ARG1 is not expressed in Human M2 macrophages, but it is in other species (eg rodents).

### Immunogen

Peptide with sequence CFGLAREGNHKPID, from the C Terminus of the protein sequence according to NP\_000036.2; NP\_001231367.1; NP\_001355949.1.

Please note the [peptide](#) is available for sale.

### Purification and Storage

Purified from goat serum by ammonium sulphate precipitation followed by antigen affinity chromatography using the immunizing peptide.

Supplied at 0.5 mg/ml in Tris saline, 0.02% sodium azide, pH7.3 with 0.5% bovine serum albumin.

Aliquot and store at -20°C. Minimize freezing and thawing.

### Applications Tested

**Peptide ELISA:** antibody detection limit dilution 1:64000.

**Western blot:** Approx. 38kDa band observed in lysates of cell line HepG2, and approx. 37kDa in Human and Pig Liver lysates (calculated MW of 34.7kDa according to Human NP\_000036.2 and 35.0kDa according to Pig NP\_999213.1). Recommended concentration: 0.01-0.3µg/ml. Primary incubation 1 hour at room temperature.

**Positive Control:** A batch specific positive control lysate is available for this product. Please contact [Sales@everestbiotech.com](mailto:Sales@everestbiotech.com) for availability.

**IHC:** Paraffin embedded Human Liver. Recommended concentration: 3.75µg/ml.

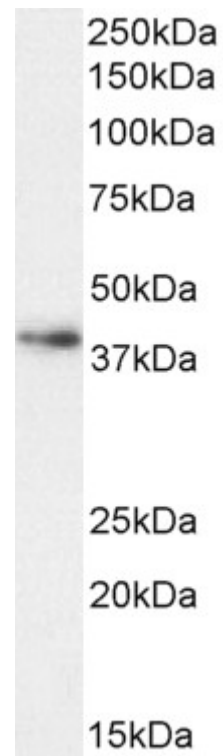
**Immunofluorescence:** Strong expression of the protein seen in the cytoplasm of HepG2 cells. Recommended concentration: 10µg/ml.

**Flow Cytometry:** Flow cytometric analysis of HepG2 cells. Recommended concentration: 10ug/ml.

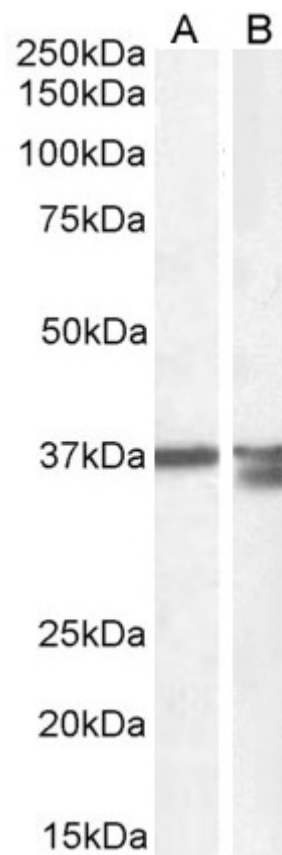
### Species Reactivity

**Tested:** Human, Pig

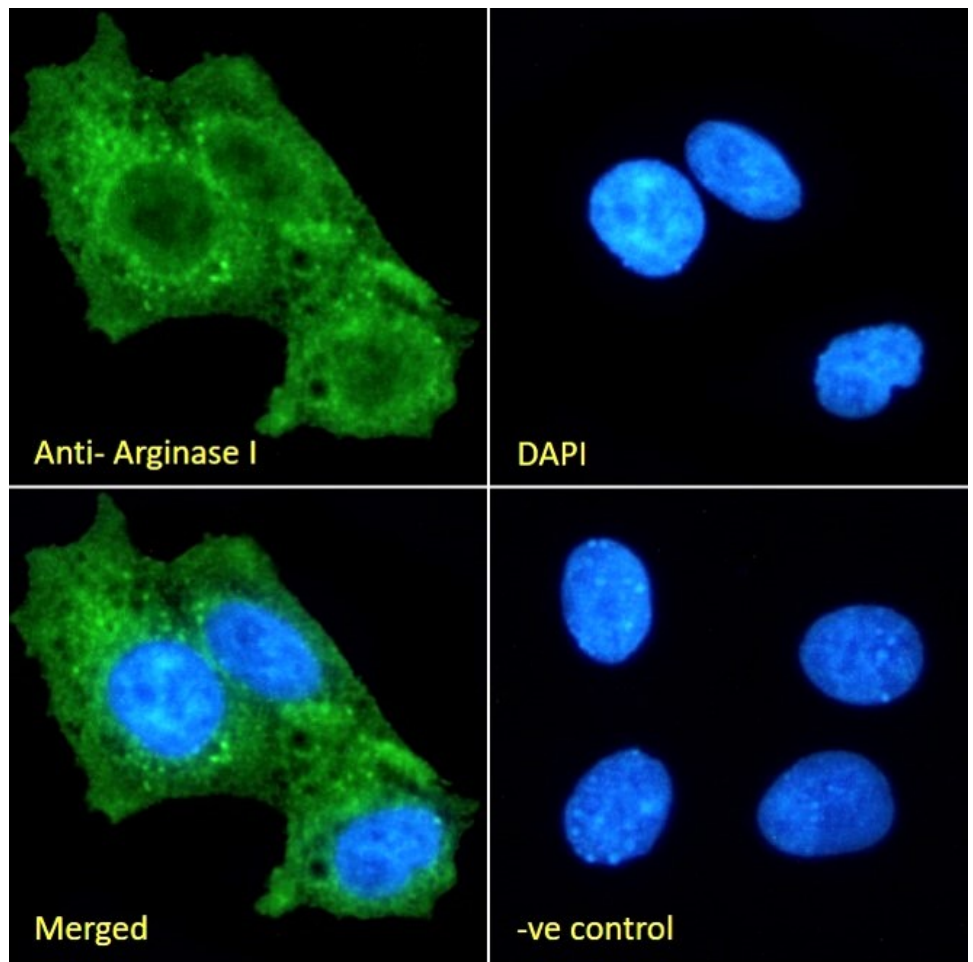
**Expected from sequence similarity:** Human, Mouse, Rat, Dog, Pig, Cow



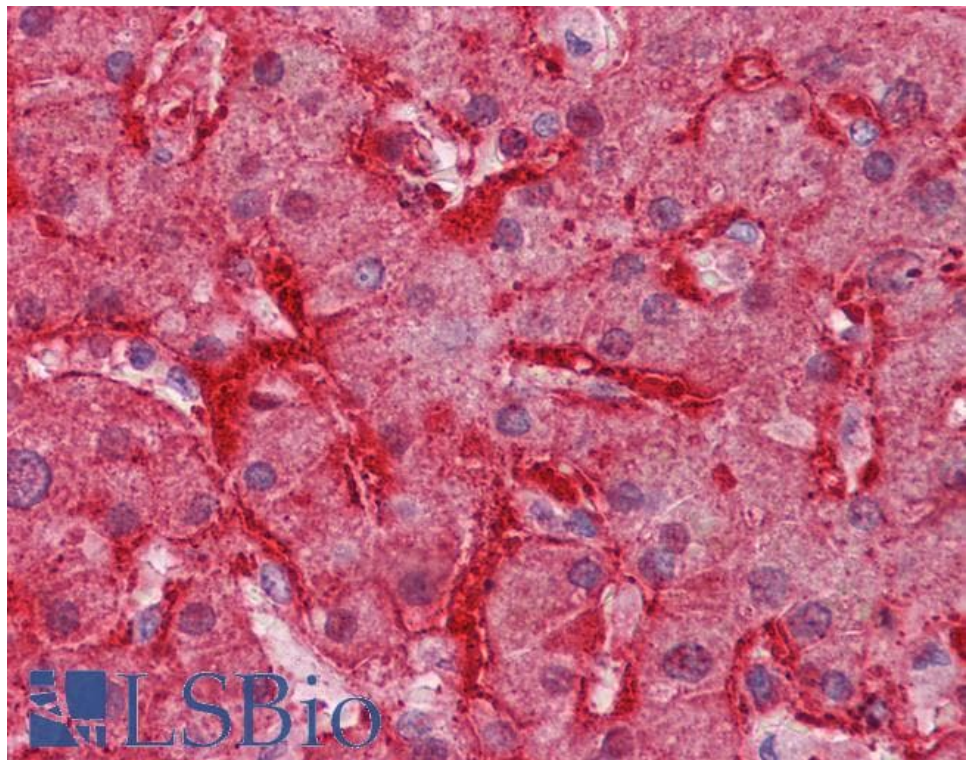
EB06795 (0.3 $\mu$ g/ml) staining of HepG2 cell lysate (35 $\mu$ g protein in RIPA buffer). Detected by chemiluminescence.



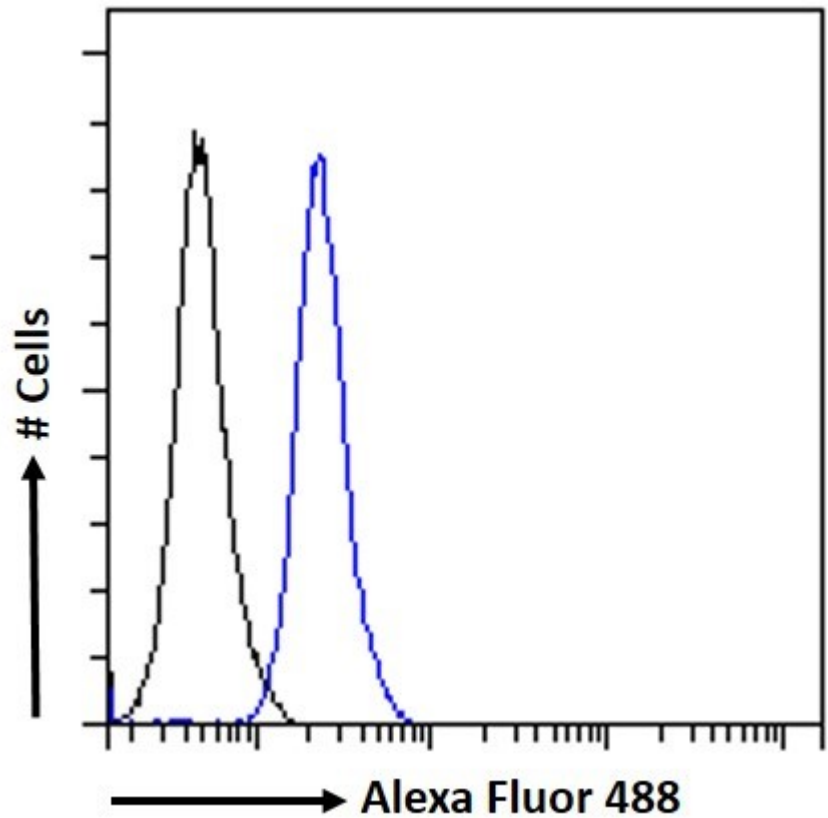
EB06795 (0.01 $\mu$ g/ml) staining of Human (A) and (0.03 $\mu$ g/ml) Pig (B) Liver lysate (35 $\mu$ g protein in RIPA buffer). Detected by chemiluminescence.



EB06795 Immunofluorescence analysis of paraformaldehyde fixed HepG2 cells, permeabilized with 0.15% Triton. Primary incubation 1hr (10ug/ml) followed by Alexa Fluor 488 secondary antibody (2ug/ml), showing cytoplasmic staining. The nuclear stain is DAPI (blue). Negative control: Unimmunized goat IgG (10ug/ml) followed by Alexa Fluor 488 secondary antibody (2ug/ml).



EB06795 (3.75 $\mu$ g/ml) staining of paraffin embedded Human Liver. Steamed antigen retrieval with citrate buffer pH 6, AP-staining.



EB06795 Flow cytometric analysis of paraformaldehyde fixed HepG2 cells (blue line), permeabilized with 0.5% Triton. Primary incubation 1hr (10 $\mu$ g/ml) followed by Alexa Fluor 488 secondary antibody (1 $\mu$ g/ml). IgG control: Unimmunized goat IgG (black line) followed by Alexa Fluor 488 secondary antibody.