



## UK Office

### Everest Biotech Ltd

Cherwell Innovation Centre  
77 Heyford Park  
Upper Heyford  
Oxfordshire  
OX25 5HD  
UK

Enquiries:

[info@everestbiotech.com](mailto:info@everestbiotech.com)

Sales:

[sales@everestbiotech.com](mailto:sales@everestbiotech.com)

Tech support:

[support@everestbiotech.com](mailto:support@everestbiotech.com)

Tel: +44 (0)1869 238326

Fax: +44 (0)1869 238327

## US Office

### Everest Biotech c/o Abcore

405 Maple Street, Suite A106  
Ramona,  
CA 92065  
USA

Inquiries:

[info@everestbiotech.com](mailto:info@everestbiotech.com)

Sales:

[usasales@everestbiotech.com](mailto:usasales@everestbiotech.com)

Tech support:

[support@everestbiotech.com](mailto:support@everestbiotech.com)

Tel: 888-320-4628 (toll-free)

Fax: 888-841-9041

[www.everestbiotech.com](http://www.everestbiotech.com)

**Research Use Only. Not for  
diagnostic or therapeutic use.**

## EB07707 - Goat Anti-Arginase, type 1 / arg1(rat) Antibody

Size: 100µg specific antibody in 200µl



### Target Protein

**Principal Names:** Arg1, arginase 1, AI type I arginase, arginase 1 liver

**Official Symbol:** Arg1

**Accession Number(s):** NP\_058830.2

**Non-Human GeneID(s):** 11846 (mouse), 29221 (rat)

### Immunogen

Peptide with sequence C-NHKPETDYLKPPK, from the C Terminus of the protein sequence according to NP\_058830.2.

Please note the [peptide](#) is available for sale.

### Purification and Storage

Purified from goat serum by ammonium sulphate precipitation followed by antigen affinity chromatography using the immunizing peptide.

Supplied at 0.5 mg/ml in Tris saline, 0.02% sodium azide, pH7.3 with 0.5% bovine serum albumin.

Aliquot and store at -20°C. Minimize freezing and thawing.

### Applications Tested

**Peptide ELISA:** antibody detection limit dilution 1:64000.

**Western blot:** Approx. 37kDa band observed in Mouse and Rat Liver lysates (calculated MW of 35kDa according to Rat NP\_058830.2 and 34.8kDa according to Mouse NP\_031508.1). Recommended concentration: 0.003-0.01µg/ml. Primary incubation 1 hour at room temperature.

### Species Reactivity

**Tested:** Mouse, Rat

**Expected from sequence similarity:** Mouse, Rat

### Specific References

**This antibody (previous batch) has been successfully used in the following paper:**

Sherman H, Gutman R, Chapnik N, Meylan J, le Coutre J, Froy O.

All-trans retinoic acid modifies the expression of clock and disease marker genes.

J Nutr Biochem. 2011 Apr 14.

PMID: 21497500

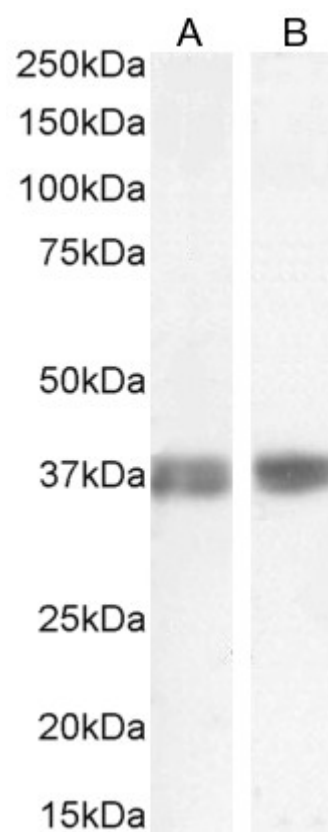
**This antibody (previous batch) has been successfully used in the following paper:**

Sherman H, Gutman R, Chapnik N, Meylan J, le Coutre J, Froy O.

Caffeine alters circadian rhythms and expression of disease and metabolic markers.

Int J Biochem Cell Biol. 2011 May;43(5):829-38.

PMID: 21352949



EB07707 (0.003 µg/ml) staining of Mouse (A) and Rat (B) Liver lysate (35 µg protein in RIPA buffer). Detected by chemiluminescence.