



UK Office

Everest Biotech Ltd

Cherwell Innovation Centre
77 Heyford Park
Upper Heyford
Oxfordshire
OX25 5HD
UK

Enquiries:

info@everestbiotech.com

Sales:

sales@everestbiotech.com

Tech support:

support@everestbiotech.com

Tel: +44 (0)1869 238326

Fax: +44 (0)1869 238327

US Office

Everest Biotech c/o Abcore

405 Maple Street, Suite A106
Ramona,
CA 92065
USA

Inquiries:

info@everestbiotech.com

Sales:

usasales@everestbiotech.com

Tech support:

support@everestbiotech.com

Tel: 888-320-4628 (toll-free)

Fax: 888-841-9041

www.everestbiotech.com

**Research Use Only. Not for
diagnostic or therapeutic use.**

EB07697 - Goat Anti-Argininosuccinate synthetase 1 Antibody

Size: 100µg specific antibody in 200µl



Target Protein

Principal Names: Argininosuccinate synthetase 1, ASS, ASS1, CTLN1, citrulline--aspartate ligase, argininosuccinate synthetase 1, citrulline-aspartate ligase

Official Symbol: ASS1

Accession Number(s): NP_000041.2; NP_446464.1

Human GeneID(s): [445](#)

Non-Human GeneID(s): 11898 (mouse), 25698 (rat)

Important Comments: The variants represent identical protein (NP_000041.2 and NP_446464.1).

Immunogen

Peptide with sequence C-ENPKNQAPPGLYTKTQD, from the internal region of the protein sequence according to NP_000041.2; NP_446464.1.

Please note the [peptide](#) is available for sale.

Purification and Storage

Purified from goat serum by ammonium sulphate precipitation followed by antigen affinity chromatography using the immunizing peptide.

Supplied at 0.5 mg/ml in Tris saline, 0.02% sodium azide, pH7.3 with 0.5% bovine serum albumin.

Aliquot and store at -20°C. Minimize freezing and thawing.

Applications Tested

Peptide ELISA: antibody detection limit dilution 1:64000.

Western blot: Approx 45kDa band observed in lysates of cell lines A431 and NIH3T3 and approx.48kDa in Human and Rat Kidney and in Mouse Liver lysates (calculated MW of 46.5kDa according to Human NP_000041.2 and Rat NP_037289.1, and 46.6kDa according to Mouse NP_031520.1). Recommended concentration: 0.03-1µg/ml. Primary incubation 1 hour at room temperature.

IHC: In paraffin embedded Human Kidney shows textured cytoplasm staining in PCT. Recommended concentration: 2-4µg/ml. Paraffin embedded Human Liver. Recommended concentration: 2.5µg/ml.

Immunofluorescence: Strong expression of the protein seen in the cytoplasm of HeLa cells. Recommended concentration: 10µg/ml.

Flow Cytometry: Flow cytometric analysis of A431 cells. Recommended concentration: 10ug/ml.

Species Reactivity

Tested: Human, Mouse, Rat

Expected from sequence similarity: Human, Mouse, Rat, Dog, Cow

Specific Reference

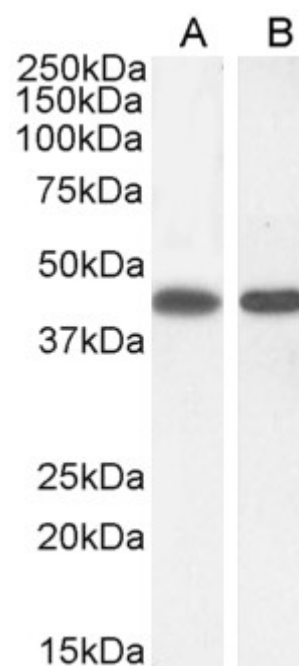
This antibody has been successfully used in WB and IP on Cow:

Corbin KD, Pendleton LC, Solomonson LP, Eichler DC.

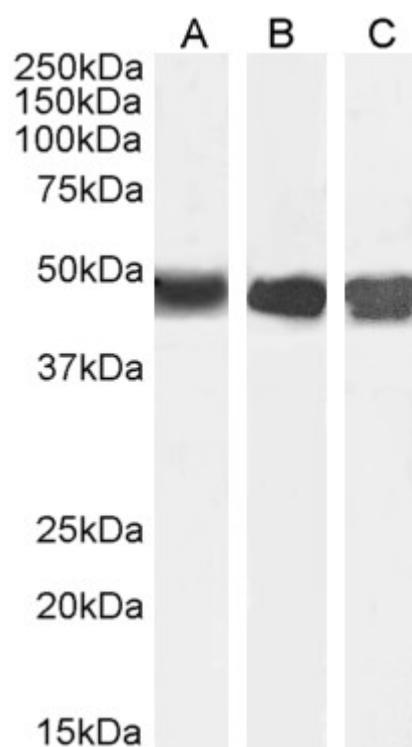
Phosphorylation of argininosuccinate synthase by protein kinase A.

Biochem Biophys Res Commun. 2008 Dec 26;377(4):1042-6.

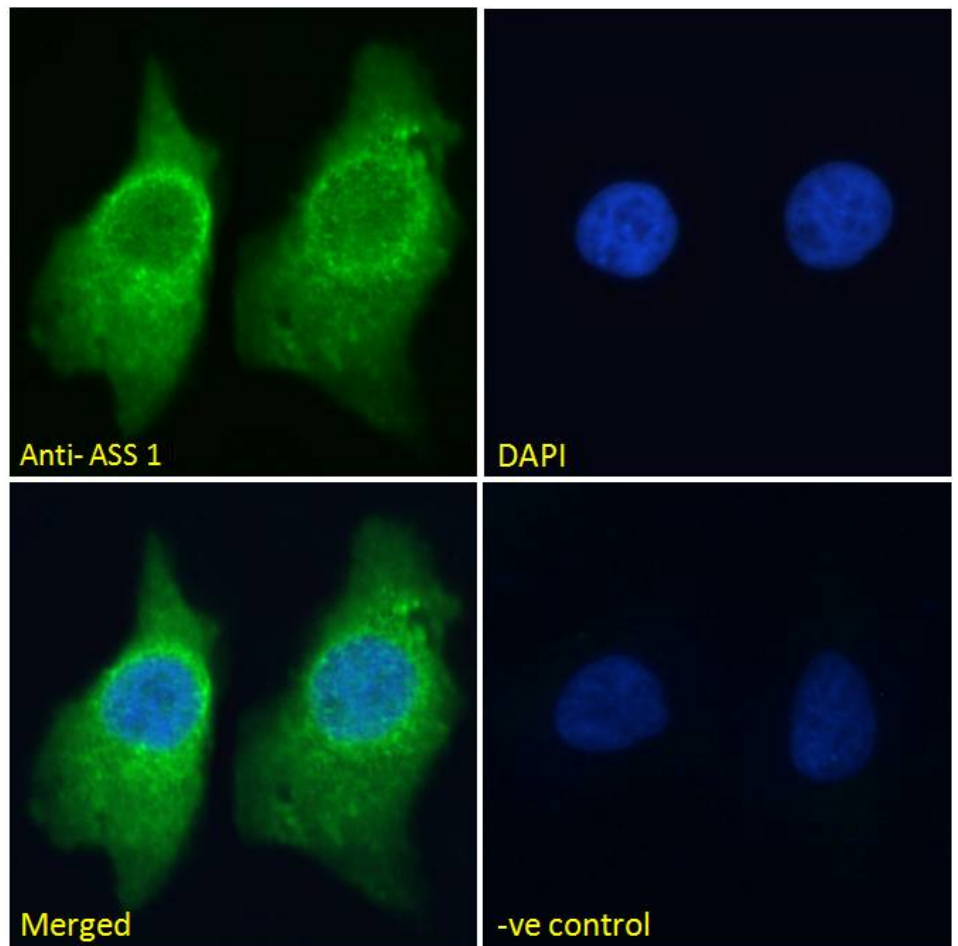
PMID: 18948083



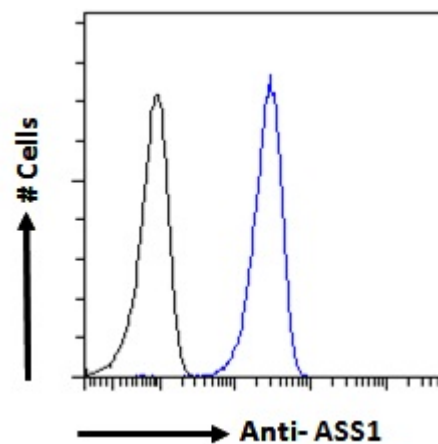
EB07697 (0.3µg/ml) staining of A431 (A) and (1ug/ml) NIH3T3(B) cell lysate (35µg protein in RIPA buffer).
Detected by chemiluminescence.



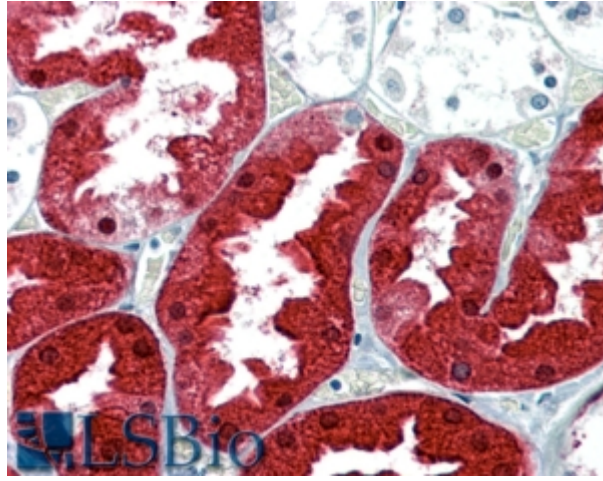
EB07697 (0.01µg/ml) staining of Human Kidney (A) Mouse Liver (B) and (0.03ug/ml) Rat Kidney (C) lysate (35µg protein in RIPA buffer). Detected by chemiluminescence.



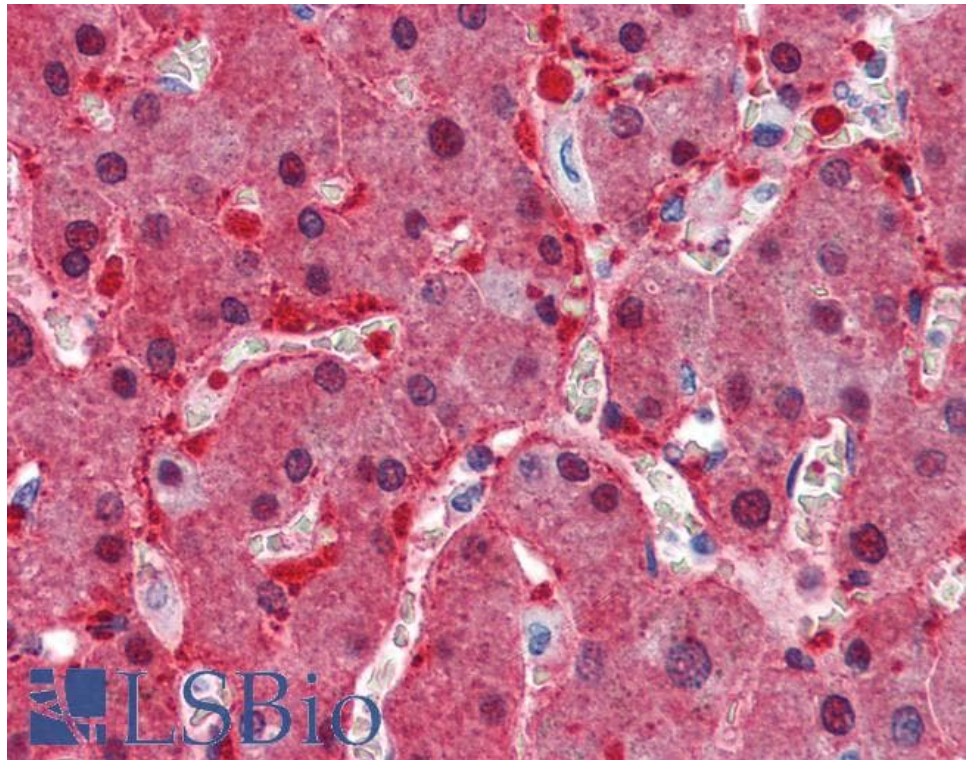
EB07697 Immunofluorescence analysis of paraformaldehyde fixed HeLa cells, permeabilized with 0.15% Triton. Primary incubation 1hr (10ug/ml) followed by Alexa Fluor 488 secondary antibody (2ug/ml), showing cytoplasmic staining. The nuclear stain is DAPI (blue). Negative control: Unimmunized goat IgG (10ug/ml) followed by Alexa Fluor 488 secondary antibody (2ug/ml).



EB07697 Flow cytometric analysis of paraformaldehyde fixed A431 cells (blue line), permeabilized with 0.5% Triton. Primary incubation 1hr (10ug/ml) followed by Alexa Fluor 488 secondary antibody (1ug/ml). IgG control: Unimmunized goat IgG (black line) followed by Alexa Fluor 488 secondary antibody.



EB07697 (2.5µg/ml) staining of paraffin embedded Human Kidney. Steamed antigen retrieval with citrate buffer pH 6, AP-staining.



EB07697 (2.5µg/ml) staining of paraffin embedded Human Liver. Steamed antigen retrieval with citrate buffer pH 6, AP-staining.