



## UK Office

### Everest Biotech Ltd

Cherwell Innovation Centre  
77 Heyford Park  
Upper Heyford  
Oxfordshire  
OX25 5HD  
UK

Enquiries:

[info@everestbiotech.com](mailto:info@everestbiotech.com)

Sales:

[sales@everestbiotech.com](mailto:sales@everestbiotech.com)

Tech support:

[support@everestbiotech.com](mailto:support@everestbiotech.com)

Tel: +44 (0)1869 238326

[www.everestbiotech.com](http://www.everestbiotech.com)

**Research Use Only. Not for  
diagnostic or therapeutic use.**

## EB10223 - Goat Anti-ARHGDIB Antibody

Size: 100µg specific antibody in 200µl



### Target Protein

**Principal Names:** D4, GDIA2, GDID4, LYGDI, Ly-GDI, RAP1GN1, Rho GDI 2, Rho GDP dissociation inhibitor (GDI) beta, Rho GDP-dissociation inhibitor 2, RhoGDI2, ARHGDIB

**Official Symbol:** ARHGDIB

**Accession Number(s):** NP\_001166.3

**Human GeneID(s):** [397](#)

### Immunogen

Peptide with sequence TEKAPEPHVE-C, from the N Terminus of the protein sequence according to NP\_001166.3.

Please note the [peptide](#) is available for sale.

### Purification and Storage

Purified from goat serum by ammonium sulphate precipitation followed by antigen affinity chromatography using the immunizing peptide.

Supplied at 0.5 mg/ml in Tris saline, 0.02% sodium azide, pH7.3 with 0.5% bovine serum albumin.

Aliquot and store at -20°C. Minimize freezing and thawing.

### Applications Tested

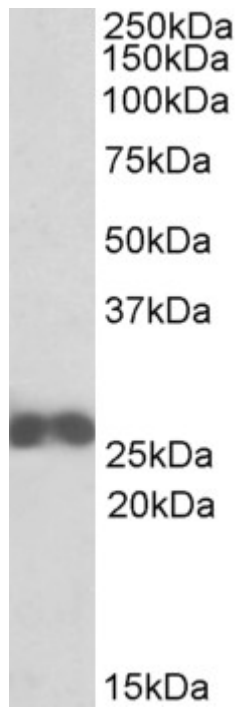
**Peptide ELISA:** antibody detection limit dilution 1:4000.

**Western blot:** Approx 26kDa band observed in lysates of cell line Jurkat (calculated MW of 23.0kDa according to NP\_001166.3). Recommended concentration: 1-3µg/ml.

### Species Reactivity

**Tested:** Human

**Expected from sequence similarity:** Human, Dog, Pig, Cow



EB10223 (0.1µg/ml) staining of Jurkat lysate (35µg protein in RIPA buffer). Primary incubation was 1 hour.  
Detected by chemiluminescence.