



UK Office

Everest Biotech Ltd

Cherwell Innovation Centre
77 Heyford Park
Upper Heyford
Oxfordshire
OX25 5HD
UK

Enquiries:

info@everestbiotech.com

Sales:

sales@everestbiotech.com

Tech support:

support@everestbiotech.com

Tel: +44 (0)1869 238326

www.everestbiotech.com

**Research Use Only. Not for
diagnostic or therapeutic use.**

EB10227 - Goat Anti-ARHGDIG Antibody

Size: 100µg specific antibody in 200µl



Target Protein

Principal Names: Rho GDP dissociation inhibitor (GDI) gamma, RhoGDI gamma, RHOGDI-3, ARHGDIG

Official Symbol: ARHGDIG

Accession Number(s): NP_001167.2

Human GeneID(s): [398](#)

Non-Human GeneID(s): 14570 (mouse), 360500 (rat)

Immunogen

Peptide with sequence C-EAVPEYRAPGRK, from the C Terminus of the protein sequence according to NP_001167.2.

Please note the [peptide](#) is available for sale.

Purification and Storage

Purified from goat serum by ammonium sulphate precipitation followed by antigen affinity chromatography using the immunizing peptide.

Supplied at 0.5 mg/ml in Tris saline, 0.02% sodium azide, pH7.3 with 0.5% bovine serum albumin.

Aliquot and store at -20°C. Minimize freezing and thawing.

Applications Tested

Peptide ELISA: antibody detection limit dilution 1:16000.

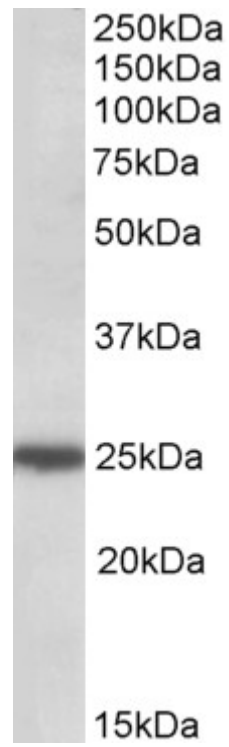
Western blot: Approx 25kDa band observed in lysates of cell line HeLa (calculated MW of 25.1kDa according to NP_001167.2). Recommended concentration: 0.5-2µg/ml. Primary incubation was 1 hour.

IHC: Paraffin embedded Human Brain (Cortex). Recommended concentration: 3.75µg/ml.

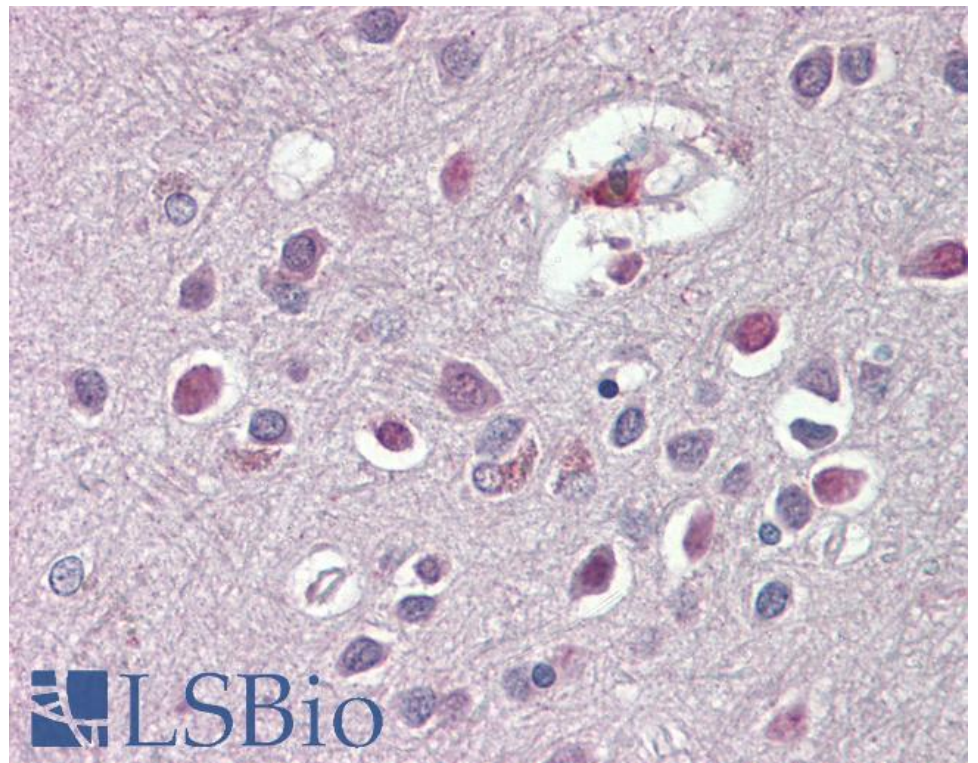
Species Reactivity

Tested: Human

Expected from sequence similarity: Human, Mouse, Rat, Dog, Cow



EB10227 (0.5 μ g/ml) staining of HeLa lysate (35 μ g protein in RIPA buffer). Detected by chemiluminescence.



EB10227 (3.75 μ g/ml) staining of paraffin embedded Human Cortex. Steamed antigen retrieval with citrate buffer Ph 6, AP-staining.