



Everest Biotech Ltd  
Cherwell Innovation Centre  
77 Heyford Park  
Upper Heyford  
Oxfordshire  
OX25 5HD, United Kingdom

[everestbiotech.com](http://everestbiotech.com)

[sales@everestbiotech.com](mailto:sales@everestbiotech.com)

[support@everestbiotech.com](mailto:support@everestbiotech.com)

Tel +44 1869 238326

Fax +44 1869 238327

**Research Use Only. Not for diagnostic or therapeutic use.**

Storage: For long-term storage keep aliquots at -20°C. (Store no longer than 12 months at 4°C). Minimize freezing and thawing.

## EB06107 - Goat Anti-ARHGEF4 Antibody

Size: 100µg specific antibody in 200µl



### Target Protein

**Principal Names:** Rho guanine nucleotide exchange factor 4, ASEF1, APC-stimulated guanine nucleotide exchange factor, DKFZp434G2016, KIAA1112, STM6, GEF4, ASEF, Rho guanine nucleotide exchange factor (GEF) 4, ARHGEF4

**Official Symbol:** ARHGEF4

**Accession Number(s):** NP\_056135.2; NP\_127462.1

**Human GeneID(s):** [50649](#)

**Important Comments:** This antibody is expected to recognise both reported isoforms (NP\_056135.2; NP\_127462.1).

### Immunogen

Peptide with sequence PWEEPAGEKPCS, from the N Terminus of the protein sequence according to NP\_056135.2; NP\_127462.1.

Please note the [peptide](#) is available for sale.

### Purification and Storage

Purified from goat serum by ammonium sulphate precipitation followed by antigen affinity chromatography using the immunizing peptide.

Supplied at 0.5 mg/ml in Tris saline, 0.02% sodium azide, pH7.3 with 0.5% bovine serum albumin.

Aliquot and store at -20°C. Minimize freezing and thawing.

### Applications Tested

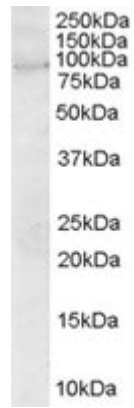
**Peptide ELISA:** antibody detection limit dilution 1:32000.

**Western blot:** Approx 80kDa band observed in Human Brain lysates and in transfected HEK293 transiently expressing ARHGEF4 (calculated MW of 79.1kDa according to NP\_056135.2 and 76.4kDa according to 127462.1). Recommended concentration: 2-4µg/ml.

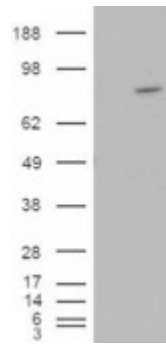
### Species Reactivity

**Tested:** Human

**Expected from sequence similarity:** Human



EB06107 (2 $\mu$ g/ml) staining of Human Brain lysate (35 $\mu$ g protein in RIPA buffer). Primary incubation was 1 hour.  
Detected by chemiluminescence.



HEK293 overexpressing ARHGEF4 (RC215591) and probed with EB06107 (mock transfection in first lane),  
tested by Origene.