



UK Office

Everest Biotech Ltd

Cherwell Innovation Centre
77 Heyford Park
Upper Heyford
Oxfordshire
OX25 5HD
UK

Enquiries:

info@everestbiotech.com

Sales:

sales@everestbiotech.com

Tech support:

support@everestbiotech.com

Tel: +44 (0)1869 238326

Fax: +44 (0)1869 238327

US Office

Everest Biotech c/o Abcore

405 Maple Street, Suite A106
Ramona,
CA 92065
USA

Inquiries:

info@everestbiotech.com

Sales:

usasales@everestbiotech.com

Tech support:

support@everestbiotech.com

Tel: 888-320-4628 (toll-free)

Fax: 888-841-9041

www.everestbiotech.com

**Research Use Only. Not for
diagnostic or therapeutic use.**

EB05813 - Goat Anti-ARIH2 / TRIAD1 Antibody

Size: 100µg specific antibody in 200µl



Target Protein

Principal Names: ARIH2, ariadne homolog 2 (Drosophila), ARI2, TRIAD1, all-trans retinoic acid inducible RING finger, ariadne-2 (D. melanogaster) homolog (all-trans retinoic acid inducible RING finger), FLJ10938, FLJ33921, OTTHUMP00000210388, ariadne homolog 2

Official Symbol: ARIH2

Accession Number(s): NP_006312.1

Human GeneID(s): [10425](#)

Non-Human GeneID(s): 23807 (mouse)

Immunogen

Peptide with sequence C-EQRRRTLLKDFHDT, from the C Terminus of the protein sequence according to NP_006312.1.

Please note the [peptide](#) is available for sale.

Purification and Storage

Purified from goat serum by ammonium sulphate precipitation followed by antigen affinity chromatography using the immunizing peptide.

Supplied at 0.5 mg/ml in Tris saline, 0.02% sodium azide, pH7.3 with 0.5% bovine serum albumin.

Aliquot and store at -20°C. Minimize freezing and thawing.

Applications Tested

Peptide ELISA: antibody detection limit dilution 1:8000.

Western blot: Approx 60kDa band observed in nuclear lysates of HeLa and K562 (Calculated MW of 57.8kDa according to NP_006312.1) Recommended concentration: 1-3µg/ml. Primary incubation was 1 hour. Customer's experiments gave a band at approx 60kDa in lysates in both Human HeLa and Mouse Muscle (IM2 & C2C12) cells. This band disappeared after RNAi knock-down. Calculated MW of 57.8kDa according to NP_006312.1). Recommended concentration: 1-3µg/ml. This antibody has also been successfully used in WB in PMID: 24486325.

Immunofluorescence: Customer's experiments showed nuclear staining in DAPI with IF. This antibody has also been successfully used in IF in PMID: 24486325.

Species Reactivity

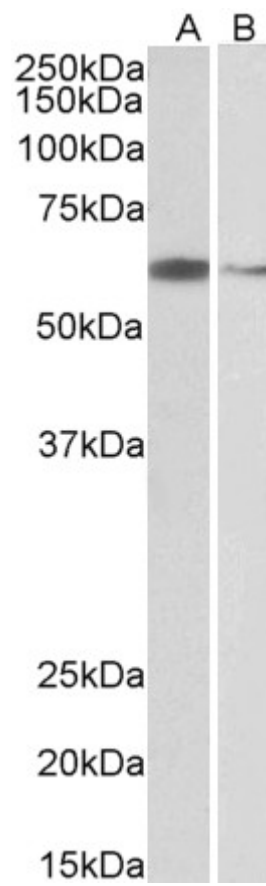
Tested: Human, Mouse

Expected from sequence similarity: Human, Mouse, Rat, Dog, Cow

Specific Reference

This antibody has been successfully used in WB and IF on Human:

Raz V, Buijze H, Raz Y, Verwey N, Anvar SY, Aartsma-Rus A, van der Maarel SM. A novel feed-forward loop between ARIH2 E3 ligase and PABPN1 regulates aging-associated muscle degeneration. Am J Pathol. 2014 Apr;184(4):1119-31. PMID: 24486325



EB05813 (2µg/ml) staining of HeLa (A) and K562 (B) nuclear lysates (35µg protein in RIPA buffer). Detected by chemiluminescence.