



Everest Biotech Ltd  
Cherwell Innovation Centre  
77 Heyford Park  
Upper Heyford  
Oxfordshire  
OX25 5HD, United Kingdom

[everestbiotech.com](http://everestbiotech.com)

[sales@everestbiotech.com](mailto:sales@everestbiotech.com)

[support@everestbiotech.com](mailto:support@everestbiotech.com)

Tel +44 1869 238326

Fax +44 1869 238327

**Research Use Only. Not for diagnostic or therapeutic use.**

Storage: For long-term storage keep aliquots at -20°C. (Store no longer than 12 months at 4°C). Minimize freezing and thawing.

## EB05549 - Goat Anti-ARL4A Antibody

Size: 100µg specific antibody in 200µl



### Target Protein

**Principal Names:** OTTHUMP00000201575, OTTHUMP00000155200, ADP-ribosylation factor-like 4A, ADP-ribosylation factor-like 4, ARL4, ARL4A

**Official Symbol:** ARL4A

**Accession Number(s):** NP\_001032241.1; NP\_005729.1; P\_997625.1

**Human GeneID(s):** [10124](#)

**Non-Human GeneID(s):** 11861 (mouse)

**Important Comments:** This is also expected to react with a hypothetical human protein, XP\_166703, and a hypothetical mouse protein, AAH03725 - both very similar to ARL4.

### Immunogen

Peptide with sequence GNGLSDQTSILSN-C, from the N Terminus of the protein sequence according to NP\_001032241.1; NP\_005729.1; P\_997625.1.

Please note the [peptide](#) is available for sale.

### Purification and Storage

Purified from goat serum by ammonium sulphate precipitation followed by antigen affinity chromatography using the immunizing peptide.

Supplied at 0.5 mg/ml in Tris saline, 0.02% sodium azide, pH7.3 with 0.5% bovine serum albumin.

Aliquot and store at -20°C. Minimize freezing and thawing.

### Applications Tested

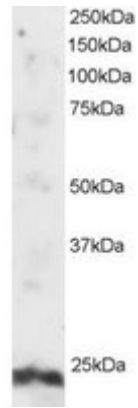
**Peptide ELISA:** antibody detection limit dilution 1:1000.

**Western blot:** Approx 23kDa band seen in Human Testis lysate. Recommended for use at 1-3µg/ml.

### Species Reactivity

**Tested:** Human

**Expected from sequence similarity:** Human, Mouse, Rat, Pig



EB05549 staining (2 $\mu$ g/ml) of Human Testis lysate (RIPA buffer, 30 $\mu$ g total protein per lane). Primary incubated for 1 hour. Detected by western blot using chemiluminescence.