



UK Office

Everest Biotech Ltd
Cherwell Innovation Centre
77 Heyford Park
Upper Heyford
Oxfordshire
OX25 5HD
UK

Enquiries:

info@everestbiotech.com

Sales:

sales@everestbiotech.com

Tech support:

support@everestbiotech.com

Tel: +44 (0)1869 238326

Fax: +44 (0)1869 238327

US Office

Everest Biotech c/o Abcore
405 Maple Street, Suite A106
Ramona,
CA 92065
USA

Inquiries:

info@everestbiotech.com

Sales:

usasales@everestbiotech.com

Tech support:

support@everestbiotech.com

Tel: 888-320-4628 (toll-free)

Fax: 888-841-9041

www.everestbiotech.com

**Research Use Only. Not for
diagnostic or therapeutic use.**

EB09904 - Goat Anti-ARMS2 Antibody

Size: 100µg specific antibody in 200µl



Target Protein

Principal Names: age-related maculopathy susceptibility 2, ARMD8, ARMS2

Official Symbol: ARMS2

Accession Number(s): NP_001093137.1

Human GeneID(s): [387715](#)

Immunogen

Peptide with sequence C-EGASDKQRSK, from the internal region of the protein sequence according to NP_001093137.1.

Please note the [peptide](#) is available for sale.

Purification and Storage

Purified from goat serum by ammonium sulphate precipitation followed by antigen affinity chromatography using the immunizing peptide.

Supplied at 0.5 mg/ml in Tris saline, 0.02% sodium azide, pH7.3 with 0.5% bovine serum albumin.

Aliquot and store at -20°C. Minimize freezing and thawing.

Applications Tested

Peptide ELISA: antibody detection limit dilution 1:4000.

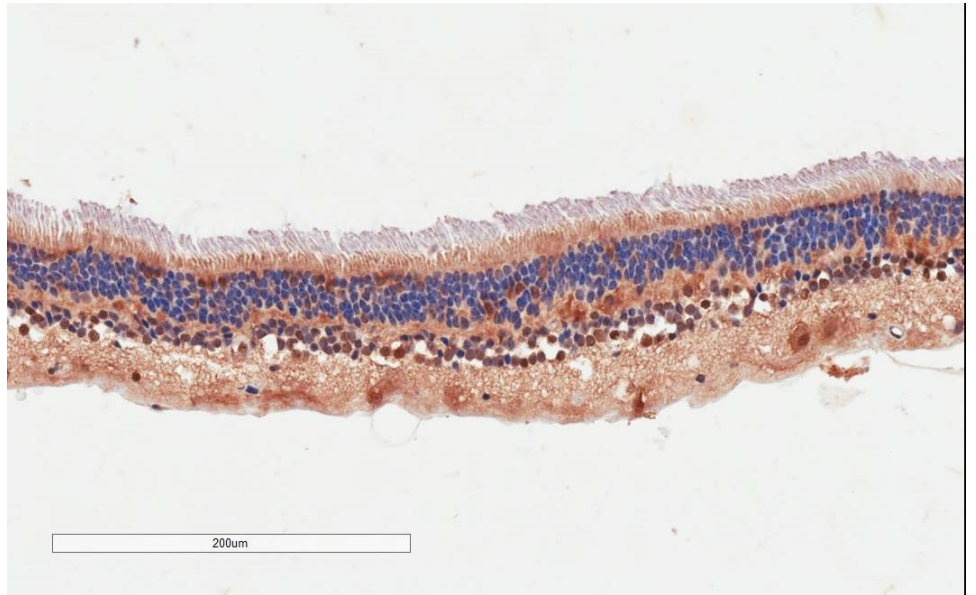
Western blot: Not yet tested - our routinely used western blotting protocol does not allow detection of proteins as small as the calculated size of 11.4kDa according to NP_001093137.1. Therefore we cannot recommend an optimal concentration.

IHC: In paraffin embedded Human Retina shows cytoplasm staining throughout.
Recommended concentration: 2-4µg/ml.

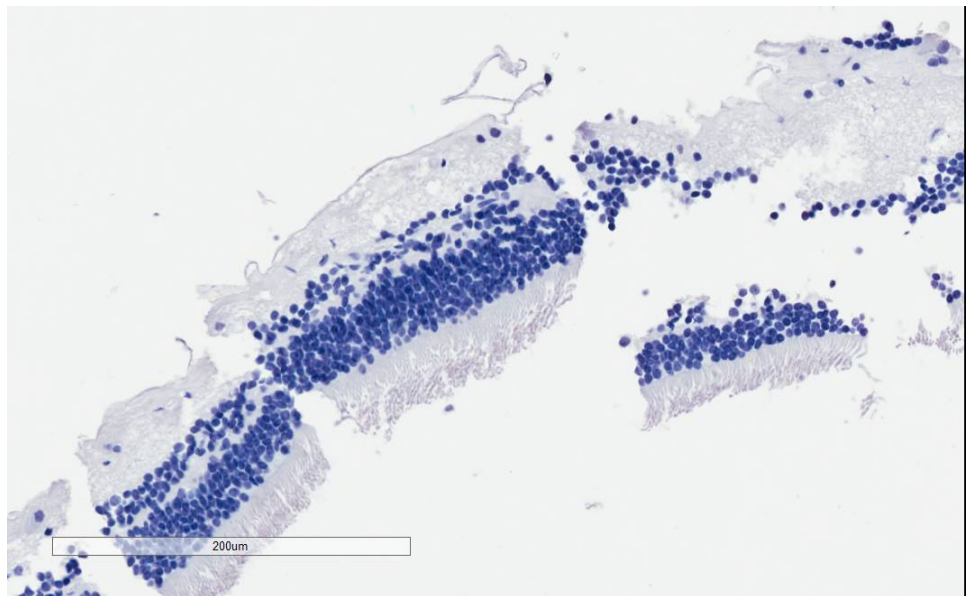
Species Reactivity

Tested: Human

Expected from sequence similarity: Human



EB09904 (4µg/ml) staining of paraffin embedded Human Retina. Microwaved antigen retrieval with citrate buffer pH 6, HRP-staining.



EB09904 Negative Control showing staining of paraffin embedded Human Retina, with no primary antibody.