

UK Office

Everest Biotech Ltd

Cherwell Innovation Centre
77 Heyford Park
Upper Heyford
Oxfordshire
OX25 5HD
UK

Enquiries:

info@everestbiotech.com

Sales:

sales@everestbiotech.com

Tech support:

support@everestbiotech.com

Tel: +44 (0)1869 238326

www.everestbiotech.com

**Research Use Only. Not for
diagnostic or therapeutic use.**

EB11219 - Goat Anti-ARNT (aa69-82) Antibody

Size: 100µg specific antibody in 200µl



Target Protein

Principal Names: aryl hydrocarbon receptor nuclear translocator, bHLHe2, class E basic helix-loop-helix protein 2, dioxin receptor, nuclear translocator, HIF1B, HIF1BETA, HIF1-beta, HIF-1beta, HIF-1-beta, hypoxia-inducible factor 1, beta subunit, OTTHUMP00000218217, OTTHUMP00000218218, OTTHUMP00000218220, TANGO, ARNT

Official Symbol: ARNT

Accession Number(s): NP_001659.1;

Human GeneID(s): [405](#)

Non-Human GeneID(s): 11863 (mouse), 25242 (rat)

Important Comments: This antibody is expected to recognize all reported isoform 1 (NP_001659.1) only.

Immunogen

Peptide with sequence CNDKERFARSDDEQS, from the internal region (near N Terminus) of the protein sequence according to NP_001659.1;

Please note the [peptide](#) is available for sale.

Purification and Storage

Purified from goat serum by ammonium sulphate precipitation followed by antigen affinity chromatography using the immunizing peptide.

Supplied at 0.5 mg/ml in Tris saline, 0.02% sodium azide, pH7.3 with 0.5% bovine serum albumin.

Aliquot and store at -20°C. Minimize freezing and thawing.

Applications Tested

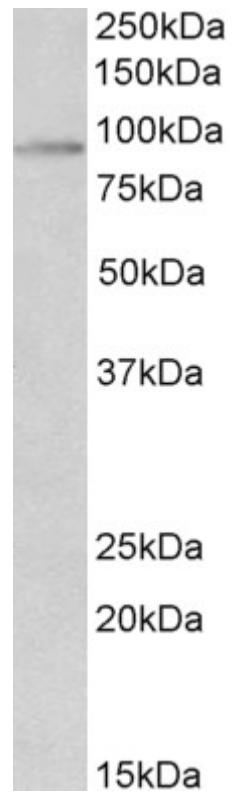
Peptide ELISA: antibody detection limit dilution 1:4000.

Western blot: Approx 90kDa band observed in nuclear lysates of cell lines HeLa and HepG2 (calculated MW of 86.6kDa according to NP_001659.1). Recommended concentration: 2-4µg/ml.

Species Reactivity

Tested: Human

Expected from sequence similarity: Human, Mouse, Rat, Dog, Cow



EB11219 (2 μ g/ml) staining of HepG2 nuclear lysate (35 μ g protein in RIPA buffer). Primary incubation was 1 hour. Detected by chemiluminescence.