



International Office

Everest Biotech Ltd

Vector Laboratories, Inc.
6737 Mowry Ave
Newark, CA 94560
United States

Customer Service:

customerservice@vectorlabs.com

Technical Service:

technical@vectorlabs.com

Tel: +1 (800) 227-6666

www.everestbiotech.com

**Research Use Only. Not for
diagnostic or therapeutic use.**

EB08329 - Goat Anti-Aromatase / CYP19A1 Antibody

Size: 100µg specific antibody in 200µl



Target Protein

Principal Names: CYP19A1, cytochrome P450, family 19, subfamily A, polypeptide 1, ARO, ARO1, CPV1, CYAR, CYP19, MGC104309, P-450AROM, aromataseN: cytochrome P450, family 19, cytochrome P450, subfamily XIX (aromatization of androgens), estrogen synthetase, flavoprotein-linked monooxygenase, microsomal monooxygenase

Official Symbol: CYP19A1

Accession Number(s): NP_000094.2; NP_112503.1

Human GeneID(s): [1588](#)

Important Comments: This antibody is expected to recognise both reported isoforms (NP_000094.2 and NP_112503.1), which are identical

Immunogen

Peptide with sequence C-HDLSLHPDETKN, from the internal region of the protein sequence according to NP_000094.2; NP_112503.1.

Please note the [peptide](#) is available for sale.

Purification and Storage

Purified from goat serum by ammonium sulphate precipitation followed by antigen affinity chromatography using the immunizing peptide.

Supplied at 0.5 mg/ml in Tris saline, 0.02% sodium azide, pH7.3 with 0.5% bovine serum albumin.

Aliquot and store at -20°C. Minimize freezing and thawing.

Applications Tested

Peptide ELISA: antibody detection limit dilution 1:128000.

Western blot: Approx 50-55kDa band observed in Human Placenta lysates (calculated MW of 57.9kDa according to NP_000094.2 and NP_112503.1). Recommended concentration: 0.1-0.3µg/ml. Primary incubation was 1 hour.

IHC: Paraffin embedded Human Placenta. Recommended concentration: 4µg/ml.

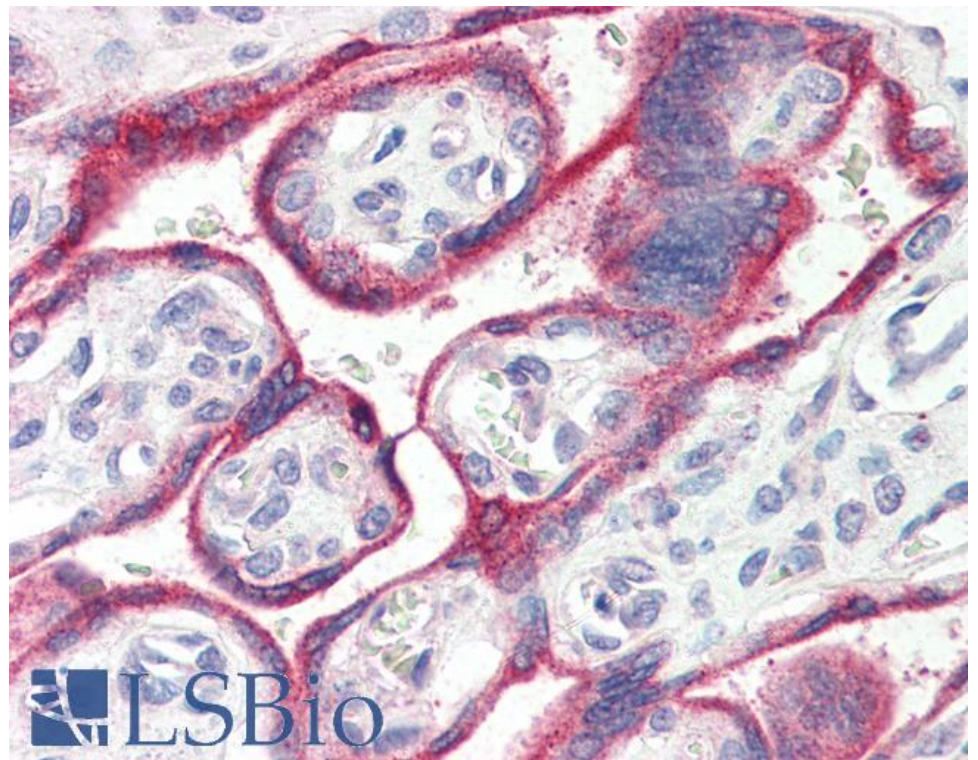
Species Reactivity

Tested: Human

Expected from sequence similarity: Human



EB08329 (0.1 μ g/ml) staining of Human Placenta lysate (35 μ g protein in RIPA buffer). Detected by chemiluminescence.



EB08329 (4 μ g/ml) staining of paraffin embedded Human Placenta. Steamed antigen retrieval with citrate buffer pH 6, AP-staining.