

**Research Use Only. Not for  
diagnostic or therapeutic use.**

Storage: For long-term storage  
keep aliquots at -20°C. (Store no  
longer than 12 months at 4°C).  
Minimize freezing and thawing.

## EB06349 - Goat Anti-ARP1 homolog A Antibody

Size: 100µg specific antibody in 200µl



### Target Protein

**Principal Names:** ARP1 actin-related protein 1 homolog A, cetractin alpha, FLJ55002, FLJ52800, FLJ52695, CTRN1, ARP1 (actin-related protein 1, yeast) homolog A (cetractin alpha), centrosome-associated actin homolog, ARP1, yeast homolog A, cetractin alpha, actin-RPV, ARP1 actin-related protein 1 homolog A, cetractin alpha (yeast), ARP1, ACTR1A

**Official Symbol:** ACTR1A

**Accession Number(s):** NP\_005727.1

**Human GeneID(s):** [10121](#)

**Non-Human GeneID(s):** 54130 (mouse)

**Important Comments:** This epitope was selected to minimise the chance of cross-reactivity with ACTR1B (YEEDGSRAIHRKT).

### Immunogen

Peptide with sequence C-YEEDGARSIHHRKT, from the C Terminus of the protein sequence according to NP\_005727.1.

Please note the [peptide](#) is available for sale.

### Purification and Storage

Purified from goat serum by ammonium sulphate precipitation followed by antigen affinity chromatography using the immunizing peptide.

Supplied at 0.5 mg/ml in Tris saline, 0.02% sodium azide, pH7.3 with 0.5% bovine serum albumin.

Aliquot and store at -20°C. Minimize freezing and thawing.

### Applications Tested

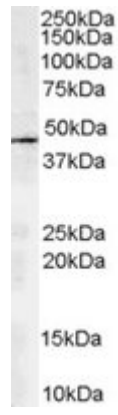
**Peptide ELISA:** antibody detection limit dilution 1:1000.

**Western blot:** Approx. 45kDa band observed in Human Kidney lysates (calculated MW of 42.6kDa according to NP\_005727.1). Recommended concentration: 1-3µg/ml.

### Species Reactivity

**Tested:** Human

**Expected from sequence similarity:** Human, Mouse, Dog, Pig



EB06349 staining (2 $\mu$ g/ml) of human kidney lysate (RIPA buffer, 35 $\mu$ g total protein per lane). Primary incubated for 1 hour. Detected by western blot using chemiluminescence.