



## UK Office

### Everest Biotech Ltd

Cherwell Innovation Centre  
77 Heyford Park  
Upper Heyford  
Oxfordshire  
OX25 5HD  
UK

Enquiries:

[info@everestbiotech.com](mailto:info@everestbiotech.com)

Sales:

[sales@everestbiotech.com](mailto:sales@everestbiotech.com)

Tech support:

[support@everestbiotech.com](mailto:support@everestbiotech.com)

Tel: +44 (0)1869 238326

Fax: +44 (0)1869 238327

## US Office

### Everest Biotech c/o Abcore

405 Maple Street, Suite A106  
Ramona,  
CA 92065  
USA

Inquiries:

[info@everestbiotech.com](mailto:info@everestbiotech.com)

Sales:

[usasales@everestbiotech.com](mailto:usasales@everestbiotech.com)

Tech support:

[support@everestbiotech.com](mailto:support@everestbiotech.com)

Tel: 888-320-4628 (toll-free)

Fax: 888-841-9041

[www.everestbiotech.com](http://www.everestbiotech.com)

**Research Use Only. Not for  
diagnostic or therapeutic use.**

## EB05433-T - Goat Anti-ARPC2 Antibody - Trial

Size: 20µg specific antibody in 40µl



### Target Protein

**Principal Names:** ARPC2, actin related protein 2/3 complex, subunit 2, 34kDa, ARC34, PRO2446, p34-Arc, PNAS-139, ARP2/3 protein complex subunit 34, actin related protein 2/3 complex subunit 2

**Official Symbol:** ARPC2

**Accession Number(s):** NP\_005722.1; NP\_690601.1

**Human GeneID(s):** [10109](#)

**Non-Human GeneID(s):** 76709 (mouse)

**Important Comments:** The reported variants NP\_005722.1 and NP\_690601.1 represent identical protein.

### Immunogen

Peptide with sequence C-EMKTITGKTFSSR, from the C Terminus of the protein sequence according to NP\_005722.1; NP\_690601.1.

Please note the [peptide](#) is available for sale.

### Purification and Storage

Purified from goat serum by ammonium sulphate precipitation followed by antigen affinity chromatography using the immunizing peptide.

Supplied at 0.5 mg/ml in Tris saline, 0.02% sodium azide, pH7.3 with 0.5% bovine serum albumin.

Aliquot and store at -20°C. Minimize freezing and thawing.

### Applications Tested

**Peptide ELISA:** antibody detection limit dilution 1:32000.

**Western blot:** Approx 34-35kDa band observed in lysates of cell lines CACO-2, HeLa and Jurkat (calculated MW of 34.3kDa according to NP\_005722.1). Recommended concentration: 0.1-0.5µg/ml. Primary incubation 1 hour at room temperature.

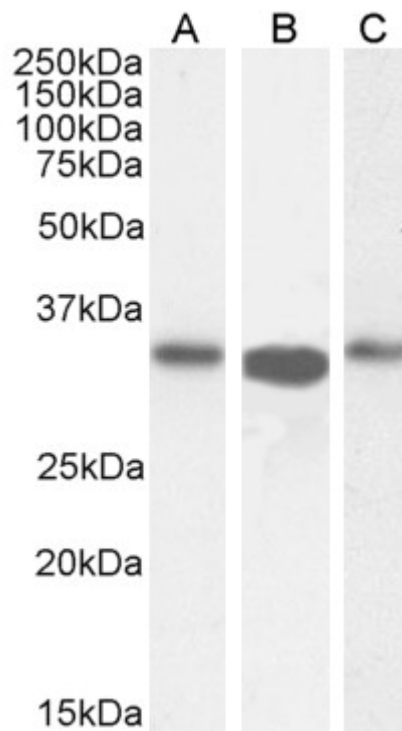
**IHC:** In paraffin embedded Human Spleen shows cytoplasm staining in some splenocytes in and around a T-cell area. Recommended concentration, 3-5µg/ml.

**Immunofluorescence:** Strong expression of the protein seen in the cytoplasm of A431 and HeLa cells. Recommended concentration: 10µg/ml.

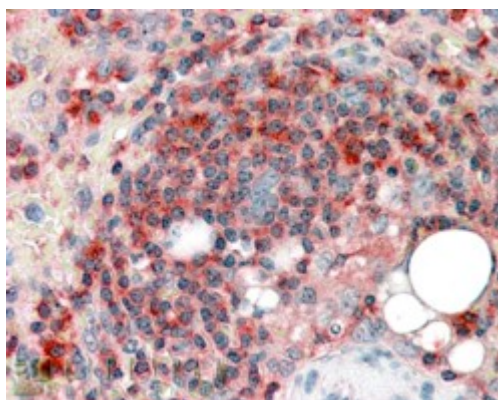
### Species Reactivity

**Tested:** Human

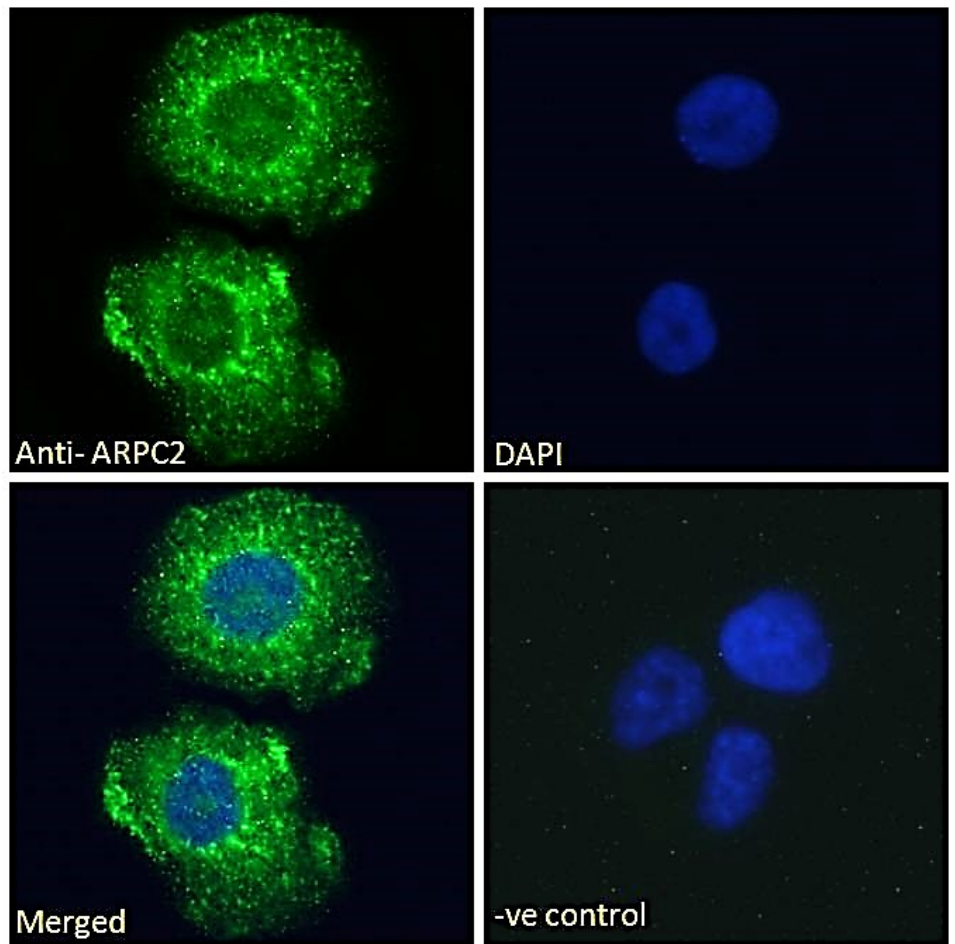
**Expected from sequence similarity:** Human, Mouse, Rat, Dog, Cow



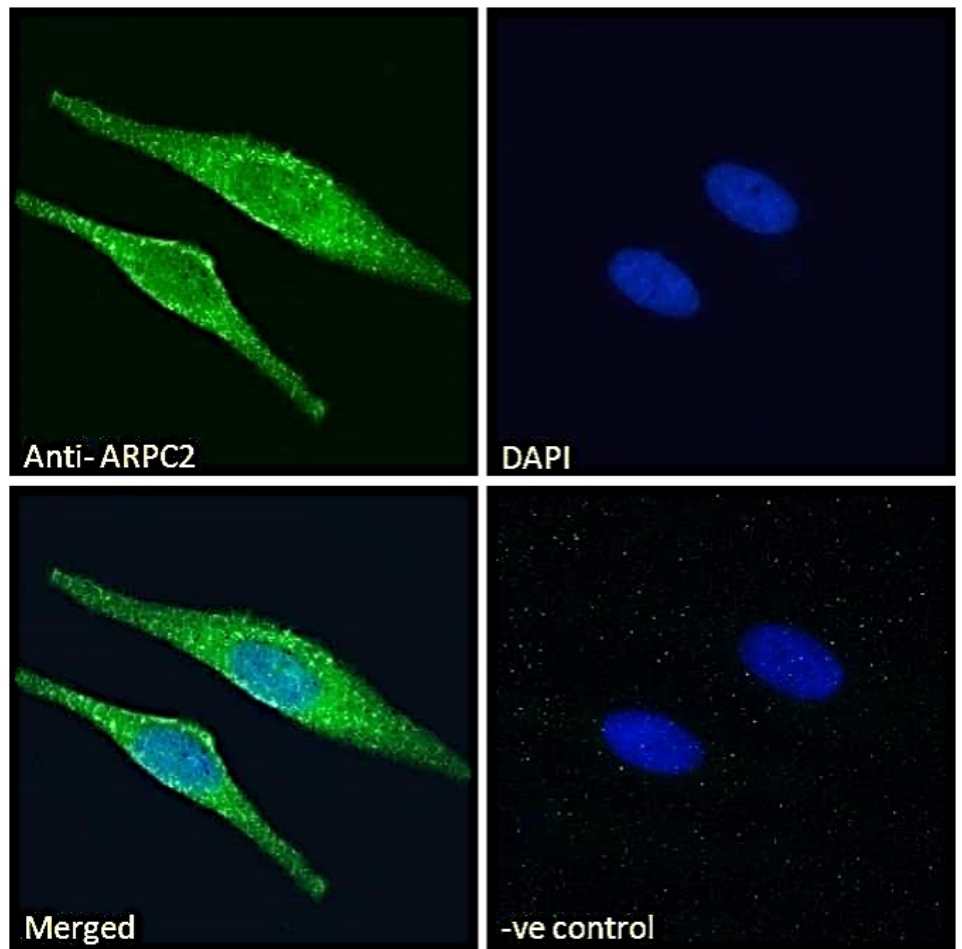
EB05433 (0.5 $\mu$ g/ml) staining of CACO-2 (A), (0.1 $\mu$ g/ml) HeLa (B) and Jurkat (C) lysate (35 $\mu$ g protein in RIPA buffer). Detected by chemiluminescence.



EB05433 (3.8 $\mu$ g/ml) staining of paraffin embedded Human Spleen. Steamed antigen retrieval with citrate buffer pH 6, AP-staining.



EB05433 Immunofluorescence analysis of paraformaldehyde fixed A431 cells, permeabilized with 0.15% Triton. Primary incubation 1hr (10ug/ml) followed by Alexa Fluor 488 secondary antibody (2ug/ml), showing cytoplasmic staining. The nuclear stain is DAPI (blue). Negative control: Unimmunized goat IgG (10ug/ml) followed by Alexa Fluor 488 secondary antibody (2ug/ml).



EB05433 Immunofluorescence analysis of paraformaldehyde fixed HeLa cells, permeabilized with 0.15% Triton. Primary incubation 1hr (10ug/ml) followed by Alexa Fluor 488 secondary antibody (2ug/ml), showing cytoplasmic staining. The nuclear stain is DAPI (blue). Negative control: Unimmunized goat IgG (10ug/ml) followed by Alexa Fluor 488 secondary antibody (2ug/ml).