



Everest Biotech Ltd  
Cherwell Innovation Centre  
77 Heyford Park  
Upper Heyford  
Oxfordshire  
OX25 5HD, United Kingdom

[everestbiotech.com](http://everestbiotech.com)

[sales@everestbiotech.com](mailto:sales@everestbiotech.com)

[support@everestbiotech.com](mailto:support@everestbiotech.com)

Tel +44 1869 238326

Fax +44 1869 238327

**Research Use Only. Not for diagnostic or therapeutic use.**

Storage: For long-term storage keep aliquots at -20°C. (Store no longer than 12 months at 4°C). Minimize freezing and thawing.

## EB05433 - Goat Anti-ARPC2 Antibody

Size: 100µg specific antibody in 200µl



### Target Protein

**Principal Names:** actin related protein 2/3 complex subunit 2, ARP2/3 protein complex subunit 34, PNAS-139, p34-Arc, PRO2446, ARC34, actin related protein 2/3 complex, subunit 2, 34kDa, ARPC2

**Official Symbol:** ARPC2

**Accession Number(s):** NP\_005722.1; NP\_690601.1

**Human GeneID(s):** [10109](#)

**Non-Human GeneID(s):** 76709 (mouse)

**Important Comments:** The reported variants NP\_005722.1 and NP\_690601.1 represent identical protein.

### Immunogen

Peptide with sequence C-EMKTITGKTFSSR, from the C Terminus of the protein sequence according to NP\_005722.1; NP\_690601.1.

Please note the [peptide](#) is available for sale.

### Purification and Storage

Purified from goat serum by ammonium sulphate precipitation followed by antigen affinity chromatography using the immunizing peptide.

Supplied at 0.5 mg/ml in Tris saline, 0.02% sodium azide, pH7.3 with 0.5% bovine serum albumin.

Aliquot and store at -20°C. Minimize freezing and thawing.

### Applications Tested

**Peptide ELISA:** antibody detection limit dilution 1:32000.

**Western blot:** Approx 33-34kDa band observed in Hela and Human Skeletal Muscle lysates (predicted MW of 34kDa according to NP\_005722). Recommended for use at 0.1-0.5µg/ml.

**IHC:** In paraffin embedded Human Spleen shows cytoplasm staining in some splenocytes in and around a T-cell area. Recommended concentration, 3-5µg/ml.

### Species Reactivity

**Tested:** Human

**Expected from sequence similarity:** Human, Mouse, Rat, Dog, Cow

### Specific References

The goat polyclonal antibody used in this paper was manufactured by us:

Li Y, Grenklo S, Higgins T, Karlsson R.

The profilin:actin complex localizes to sites of dynamic actin polymerization at the leading edge of migrating cells and pathogen-induced actin tails.

Eur J Cell Biol. 2008 Nov;87(11):893-904.

**PMID:** 18707793

The goat polyclonal antibody used in this paper was manufactured by us:

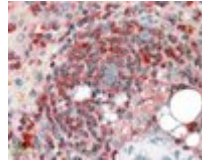
Fougner SL, Bollerslev J, Latif F, Hald JK, Lund T, Ramm-Petersen J, Berg JP.

Low levels of raf kinase inhibitory protein in growth hormone-secreting pituitary adenomas correlate with poor response to octreotide treatment.

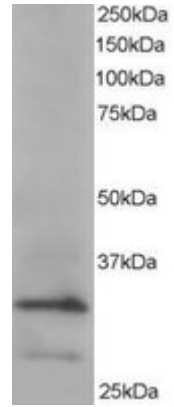
J Clin Endocrinol Metab. 2008 Apr;93(4):1211-6.

**PMID:** 18230656

The goat polyclonal antibody used in this paper was manufactured by us:  
Sakata D, Taniguchi H, Yasuda S, Adachi-Morishima A, Hamazaki Y, Nakayama R, Miki  
T, Minato N, Narumiya S.  
Impaired T lymphocyte trafficking in mice deficient in an actin-nucleating protein, mDia1.  
J Exp Med. 2007 Sep 3;204(9):2031-8.  
**PMID:** 17682067



EB05433 (3.8 $\mu$ g/ml) staining of paraffin embedded Human Spleen. Steamed antigen retrieval with citrate buffer pH 6, AP-staining.



EB05433 staining (0.2 $\mu$ g/ml) of HeLa lysate (RIPA buffer, 35 $\mu$ g total protein per lane). Primary incubated for 1 hour. Detected by western blot using chemiluminescence.