



UK Office

Everest Biotech Ltd

Cherwell Innovation Centre
77 Heyford Park
Upper Heyford
Oxfordshire
OX25 5HD
UK

Enquiries:

info@everestbiotech.com

Sales:

sales@everestbiotech.com

Tech support:

support@everestbiotech.com

Tel: +44 (0)1869 238326

Fax: +44 (0)1869 238327

US Office

Everest Biotech c/o Abcore

405 Maple Street, Suite A106
Ramona,
CA 92065
USA

Inquiries:

info@everestbiotech.com

Sales:

usasales@everestbiotech.com

Tech support:

support@everestbiotech.com

Tel: 888-320-4628 (toll-free)

Fax: 888-841-9041

www.everestbiotech.com

**Research Use Only. Not for
diagnostic or therapeutic use.**

EB06745-B - Goat Anti-Arrestin beta 2, Biotinylated Antibody

Size: 100µg specific antibody in 200µl



Target Protein

Principal Names: ARRB2, arrestin, beta 2, ARB2, ARR2, BARR2, arrestin 3, arrestin beta-2, arrestin beta 2, beta-arrestin 2, DKFZp686L0365, HGNC:712

Official Symbol: ARRB2

Accession Number(s): NP_004304.1; NP_945355.1; NP_001244257.1;
NP_001244259.1; NP_001244260.1

Human GeneID(s): [409](#)

Non-Human GeneID(s): 216869 (mouse), 25388 (rat)

Important Comments: This antibody is expected to recognise both reported isoforms 1, 2, 3, 5 and 6 (NP_004304.1; NP_945355.1; NP_001244257.1; NP_001244259.1; NP_001244260.1). No crossreactivity is expected with Arrestin beta 1.

Immunogen

Peptide with sequence C-HDHIPLPRPQS., from the internal region of the protein sequence according to NP_004304.1; NP_945355.1; NP_001244257.1; NP_001244259.1; NP_001244260.1.

Please note the [peptide](#) is available for sale.

Purification and Storage

Purified from goat serum by ammonium sulphate precipitation followed by antigen affinity chromatography using the immunizing peptide.

Supplied at 0.5 mg/ml in Tris saline, 0.02% sodium azide, pH7.3 with 0.5% bovine serum albumin.

Aliquot and store at -20°C. Minimize freezing and thawing.

Applications Tested

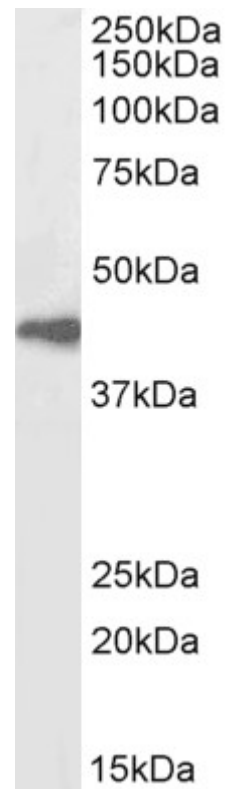
Peptide ELISA: antibody detection limit dilution 1:128000.

Western blot: Approx 45kDa band observed in Human Spleen lysates (calculated MW of 46.1kDa according to NP_004304.1). See non-biotinylated parental product's datasheet for further QC data. Please note that the batch that produced this biotinylated product is different from the batch currently on sale. Recommended concentration: 1-3µg/ml.

Species Reactivity

Tested: Human, Mouse, Rat

Expected from sequence similarity: Human, Mouse, Rat



Biotinylated EB06745 (1µg/ml) staining of Human Spleen lysate (35µg protein in RIPA buffer), exactly mirroring its parental non-biotinylated product. Primary incubation was 1 hour. Detected by chemiluminescence, using streptavidin-HRP and using NAP blocker as a substitute for skimmed milk.