

## UK Office

### Everest Biotech Ltd

Cherwell Innovation Centre  
77 Heyford Park  
Upper Heyford  
Oxfordshire  
OX25 5HD  
UK

Enquiries:

[info@everestbiotech.com](mailto:info@everestbiotech.com)

Sales:

[sales@everestbiotech.com](mailto:sales@everestbiotech.com)

Tech support:

[support@everestbiotech.com](mailto:support@everestbiotech.com)

Tel: +44 (0)1869 238326

[www.everestbiotech.com](http://www.everestbiotech.com)

**Research Use Only. Not for  
diagnostic or therapeutic use.**

## EB10274 - Goat Anti-ARTN Antibody

Size: 100µg specific antibody in 200µl



### Target Protein

**Principal Names:** artemin, ENOVIN, EVN, NBN, neublastin, neurotrophic factor, neurotrophic factor artemin, ARTN

**Official Symbol:** ARTN

**Accession Number(s):** NP\_003967.2; NP\_476501.1; NP\_476431.2

**Human GeneID(s):** [9048](#)

**Non-Human GeneID(s):** 11876 (mouse), 362572 (rat)

**Important Comments:** This antibody is expected to recognize all reported isoforms (NP\_003967.2; NP\_476501.1; NP\_476431.2). Reported variants represent identical protein: NP\_476431.2, NP\_001129687.1 Reported variants represent identical protein: NP\_003967.2, NP\_476432.2

### Immunogen

Peptide with sequence C-NSTWRTVDRLS, from the internal region of the protein sequence according to NP\_003967.2; NP\_476501.1; NP\_476431.2.

Please note the [peptide](#) is available for sale.

### Purification and Storage

Purified from goat serum by ammonium sulphate precipitation followed by antigen affinity chromatography using the immunizing peptide.

Supplied at 0.5 mg/ml in Tris saline, 0.02% sodium azide, pH7.3 with 0.5% bovine serum albumin.

Aliquot and store at -20°C. Minimize freezing and thawing.

### Applications Tested

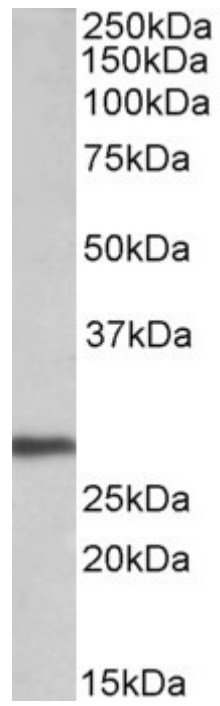
**Peptide ELISA:** antibody detection limit dilution 1:8000.

**Western blot:** Approx 28kDa band observed in lysates of cell lines HEK293, HepG2 and Kelly (calculated MW of 22.9kDa according to NP\_003967.2). The observed molecular weight corresponds to earlier findings in literature with different antibodies (Pandey et al, Endocrinology. 2010 Mar;151(3):909-20; PMID: 20118197). Recommended concentration: 0.1-0.3µg/ml.

### Species Reactivity

**Tested:** Human

**Expected from sequence similarity:** Human, Mouse, Rat



EB10274 (0.1 $\mu$ g/ml) staining of HEK293 lysate (35 $\mu$ g protein in RIPA buffer). Primary incubation was 1 hour.  
Detected by chemiluminescence.