

UK Office

Everest Biotech Ltd

Cherwell Innovation Centre
77 Heyford Park
Upper Heyford
Oxfordshire
OX25 5HD
UK

Enquiries:

info@everestbiotech.com

Sales:

sales@everestbiotech.com

Tech support:

support@everestbiotech.com

Tel: +44 (0)1869 238326

www.everestbiotech.com

**Research Use Only. Not for
diagnostic or therapeutic use.**

EB07457 - Goat Anti-Arylsulfatase A Antibody

Size: 100µg specific antibody in 200µl



Target Protein

Principal Names: ARSA, arylsulfatase A, MLD, cerebroside-sulfatase, cerebroside 3-sulfatase

Official Symbol: ARSA

Accession Number(s): NP_000478.3; NP_001078897.1

Human GeneID(s): [410](#)

Non-Human GeneID(s): 11883 (mouse), 315222 (rat)

Immunogen

Peptide with sequence C-YDSLKDPGENYN, from the internal region of the protein sequence according to NP_000478.3; NP_001078897.1.

Please note the [peptide](#) is available for sale.

Purification and Storage

Purified from goat serum by ammonium sulphate precipitation followed by antigen affinity chromatography using the immunizing peptide.

Supplied at 0.5 mg/ml in Tris saline, 0.02% sodium azide, pH7.3 with 0.5% bovine serum albumin.

Aliquot and store at -20°C. Minimize freezing and thawing.

Applications Tested

Peptide ELISA: antibody detection limit dilution 1:32000.

Western blot: Approx 60-65Da band observed in Mouse and Rat Testis lysates (calculated MW of 53.7kDa according to Mouse NP_033843.2 and Rat NP_001030105.2;). This molecular weight is routinely observed by other sources and was successfully blocked by incubation with the immunizing peptide. Recommended concentration:0.3-1µg/ml. Primary incubation 1 hour at room temperature.

IHC: Paraffin embedded Human Brain (Cortex) and Testis. Recommended concentration: 5µg/ml.

Immunofluorescence: Strong expression of the protein seen in the Golgi apparatus of HeLa cells. Recommended concentration: 10µg/ml.

Flow Cytometry: Flow cytometric analysis of HeLa cells. Recommended concentration: 10ug/ml.

Species Reactivity

Tested: Human, Mouse, Rat

Expected from sequence similarity: Human, Mouse, Rat

Specific References

This antibody has been successfully used in Western blot on Mouse:

Guo R, Hu X, Yamada Y, Harada M, Nakajima T, Kashihara T, Yamada M, Aoyama T, Kamijo Y

Effects of hypertension and antihypertensive treatments on sulfatidelevels in serum and its metabolism

Hypertens Res. 2019 May;42(5):598-609.

PMID: 30531843

This antibody has been successfully used in WB on Mouse:

Lu Y, Harada M, Kamijo Y, Nakajima T, Tanaka N, Sugiyama E, Kyogashima

M, Gonzalez FJ, Aoyama T

Peroxisome proliferator-activated receptor α attenuates high-cholesterol diet-induced toxicity and pro

Arch Toxicol. 2019 Jan;93(1):149-161

PMID: 30341732

This antibody has been successfully used in the following paper:

Kanbe H, Kamijo Y, Nakajima T, Tanaka N, Sugiyama E, Wang L, Fang ZZ, Hara A, Gonzalez FJ, Aoyama T

Chronic ethanol consumption decreases serum sulfatide levels by suppressing hepatic cerebroside sulfotransferase expression in mice.

Arch Toxicol. 2014 Feb;88(2):367-79.

PMID: 24065054

This antibody has been successfully used in WB on Mouse in the following paper:

Kimura T, Nakajima T, Kamijo Y, Tanaka N, Wang L, Hara A, Sugiyama E, Tanaka E, Gonzalez FJ, Aoyama T

Hepatic Cerebroside Sulfotransferase Is Induced by PPAR α Activation in Mice.

PPAR Res. 2012;2012:174932.

PMID: 22645601

This antibody has been successfully used in WB on Mouse in the following paper:

Kiebish MA, Young DM, Lehman JJ, Han X.

Chronic caloric restriction attenuates a loss of sulfatide content in PGC-1 α ^{-/-} mouse cortex: a potential lipidomic role of PGC-1 α in neurodegeneration.

J Lipid Res. 2012 Feb;53(2):273-81.

PMID: 22114039

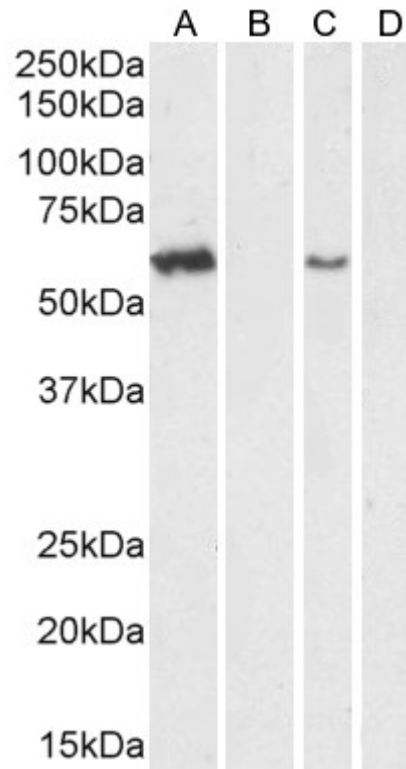
This antibody has been successfully used in the following paper:

Zhang X, Nakajima T, Kamijo Y, Li G, Hu R, Kannagi R, Kyogashima M, Aoyama T, Hara A.

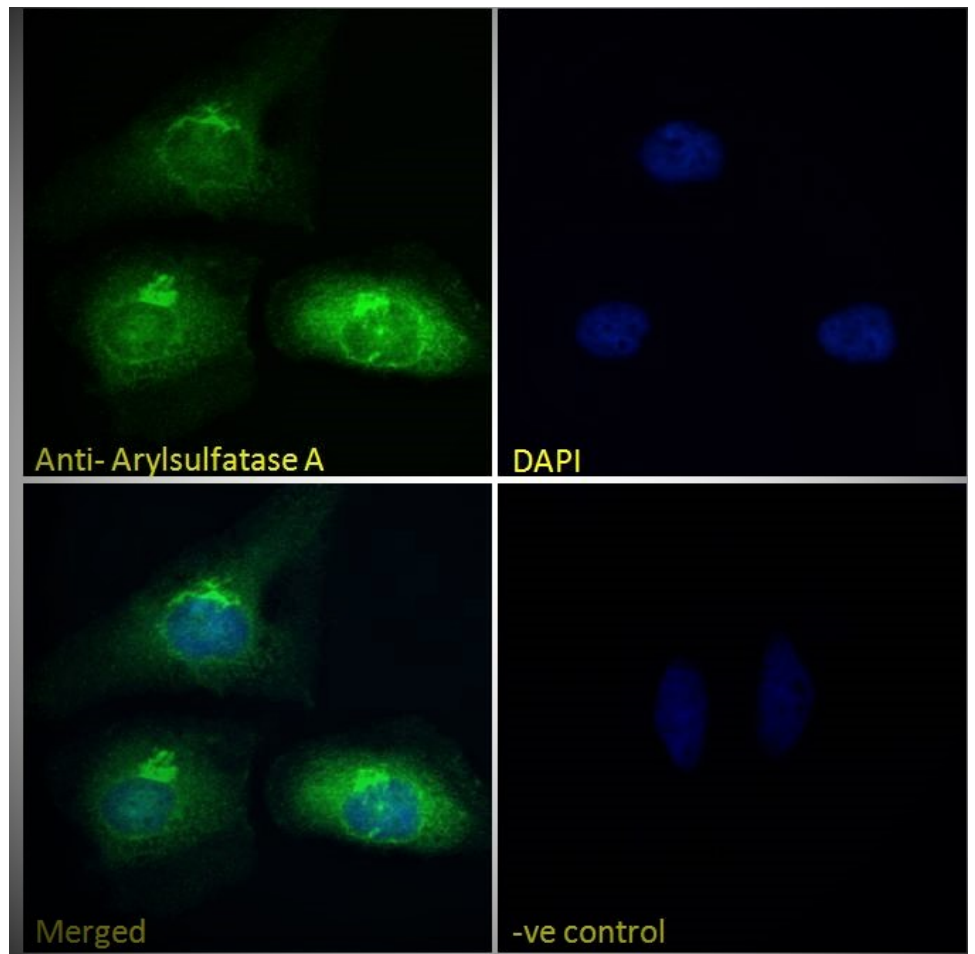
Acute kidney injury induced by protein-overload nephropathy down-regulates gene expression of hepatic cerebroside sulfotransferase in mice, resulting in reduction of liver and serum sulfatides.

Biochem Biophys Res Commun. 2009 Dec 25;390(4):1382-8.

PMID: 19895791

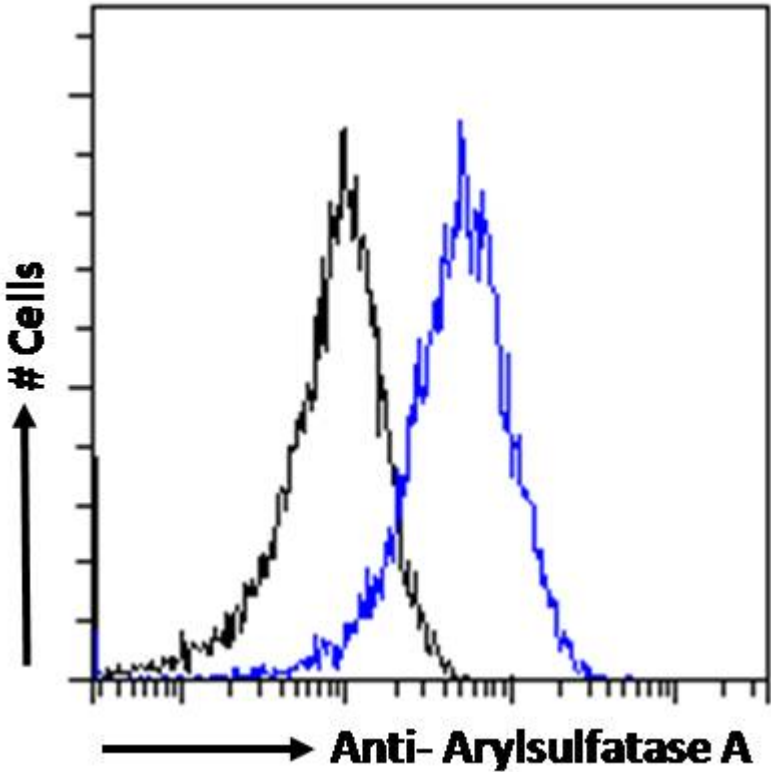


EB07457 (1 μ g/ml) staining of Mouse Testes lysate (A) + peptide (B) and (0.3 μ g/ml) Rat Testes lysate (C) + peptide (D) 35 μ g protein in RIPA buffer). Detected by chemiluminescence.

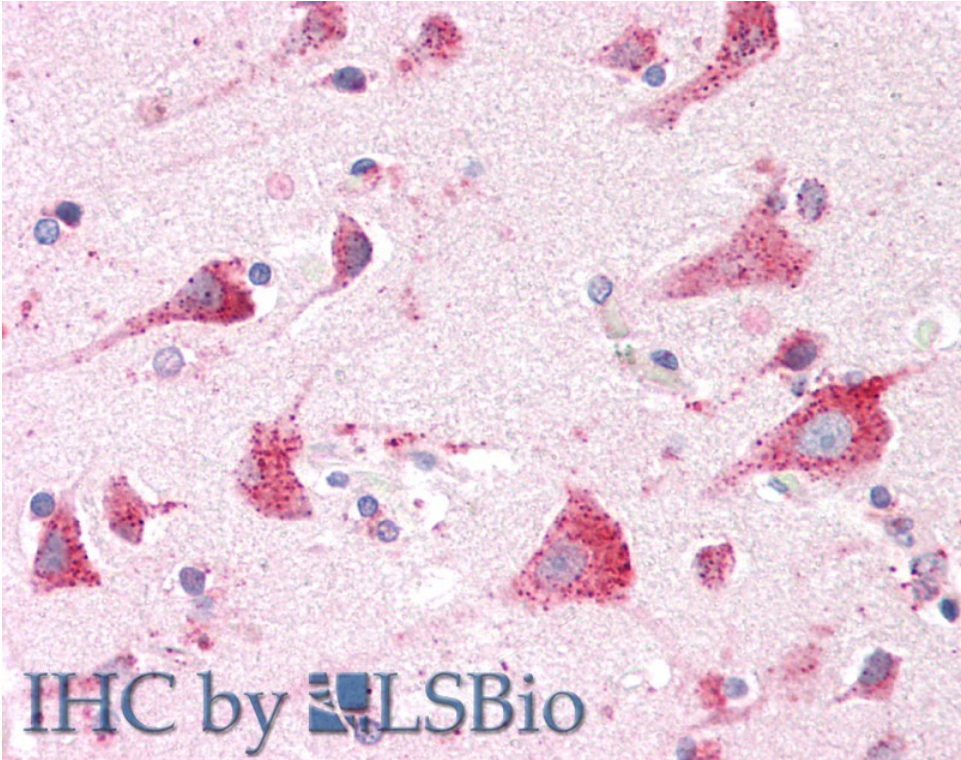


EB07457 Immunofluorescence analysis of paraformaldehyde fixed HeLa cells, permeabilized with 0.15% Triton. Primary incubation 1hr (10 μ g/ml) followed by Alexa Fluor 488 secondary antibody (2 μ g/ml), showing Golgi

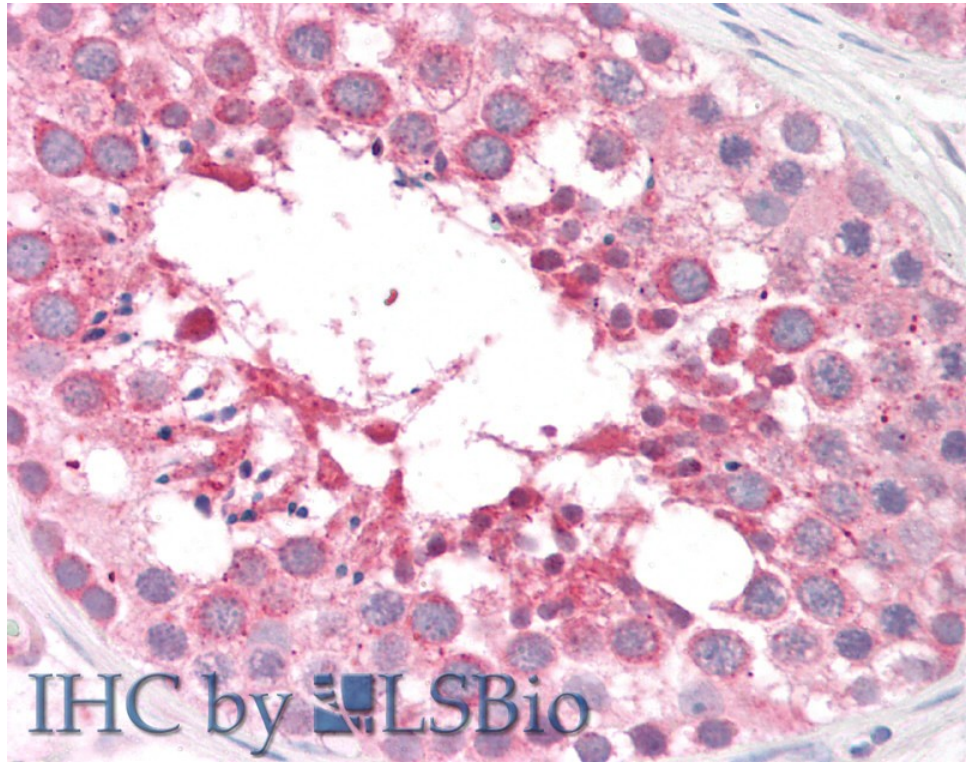
apparatus staining. The nuclear stain is DAPI (blue). Negative control: Unimmunized goat IgG (10ug/ml) followed by Alexa Fluor 488 secondary antibody (2ug/ml).



EB07457 Flow cytometric analysis of paraformaldehyde fixed HeLa cells (blue line), permeabilized with 0.5% Triton. Primary incubation 1hr (10ug/ml) followed by Alexa Fluor 488 secondary antibody (1ug/ml). IgG control: Unimmunized goat IgG (black line) followed by Alexa Fluor 488 secondary antibody.



EB07457 (5µg/ml) staining of paraffin embedded Human Cortex. Steamed antigen retrieval with citrate buffer pH 6, AP-staining.



EB07457 (5µg/ml) staining of paraffin embedded Human Testis. Steamed antigen retrieval with citrate buffer pH 6, AP-staining.