

UK Office

Everest Biotech Ltd

Cherwell Innovation Centre
77 Heyford Park
Upper Heyford
Oxfordshire
OX25 5HD
UK

Enquiries:

info@everestbiotech.com

Sales:

sales@everestbiotech.com

Tech support:

support@everestbiotech.com

Tel: +44 (0)1869 238326

www.everestbiotech.com

**Research Use Only. Not for
diagnostic or therapeutic use.**

EB07591 - Goat Anti-AS160 / TBC1D4 Antibody

Size: 100µg specific antibody in 200µl



Target Protein

Principal Names: TBC1D4, AS160, TBC1 domain family, member 4, RP11-159J2.1, DKFZp779C0666, Acrg embryonic lethality (mouse) minimal region ortholog, OTTHUMP00000040818, TBC (Tre-2, BUB2, CDC16) domain-containing protein, KIAA0603

Official Symbol: TBC1D4

Accession Number(s): NP_055647.2

Human GeneID(s): [9882](#)

Immunogen

Peptide with sequence C-DDPEKIEERKSK, from the internal region of the protein sequence according to NP_055647.2.

Please note the [peptide](#) is available for sale.

Purification and Storage

Purified from goat serum by ammonium sulphate precipitation followed by antigen affinity chromatography using the immunizing peptide.

Supplied at 0.5 mg/ml in Tris saline, 0.02% sodium azide, pH7.3 with 0.5% bovine serum albumin.

Aliquot and store at -20°C. Minimize freezing and thawing.

Applications Tested

Peptide ELISA: antibody detection limit dilution 1:128000.

Western blot: Approx 150kDa band observed in lysates of cell lines Daudi and MOLT4 (calculated MW of 147kDa according to NP_055647.2). Recommended concentration: 0.1-0.3µg/ml.

IHC: In paraffin embedded Human Skeletal Muscle shows striated pattern staining of majority of muscular fibres. Recommended concentration, 3-5µg/ml.

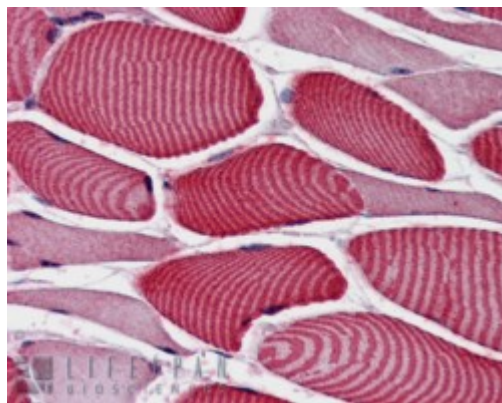
Species Reactivity

Tested: Human

Expected from sequence similarity: Human, Dog



EB07591 (0.1 μ g/ml) staining of Daudi cell lysate (35 μ g protein in RIPA buffer). Primary incubation was 1 hour. Detected by chemiluminescence.



EB07591 (3.8 μ g/ml) staining of paraffin embedded Human Skeletal Muscle. Steamed antigen retrieval with citrate buffer pH 6, AP-staining.